



Conditional Processing using Arbortext Profiling Feature

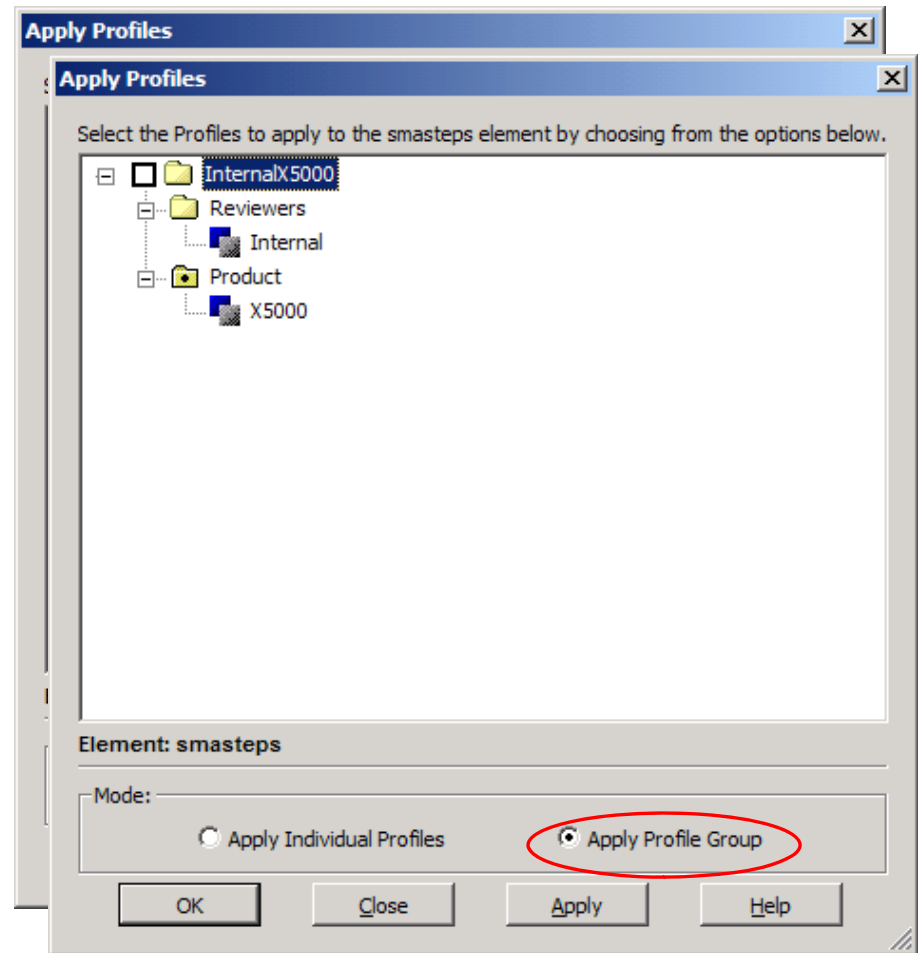
Robin Sloan

October 13, 2009

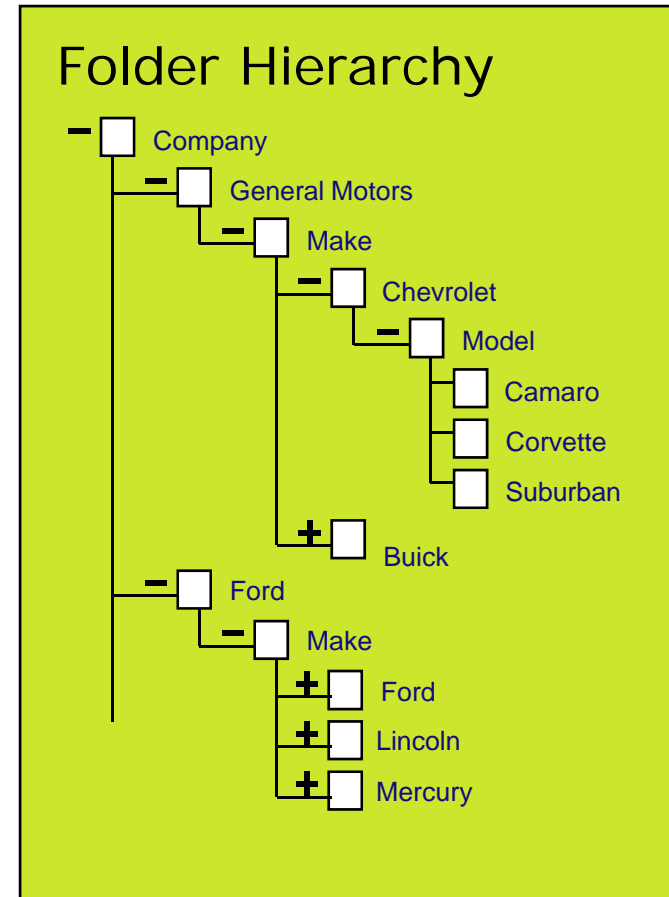
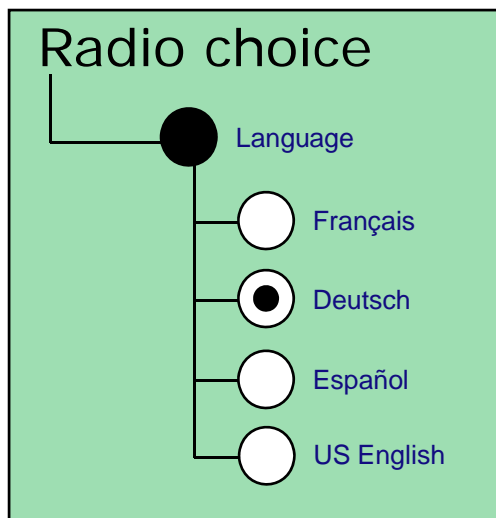
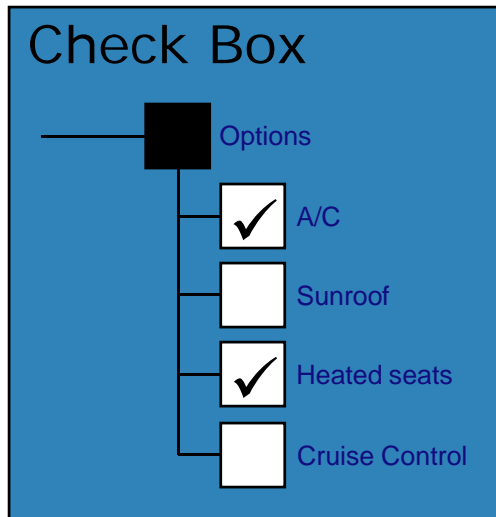
Profiling Overview

Profiling (conditional processing) is a means to provide specific content for a selected audience or for a specific application

- Authors create all document variations in one file
- Authors apply profile values to elements, as defined in Profiling Configuration File (.pcf)
 - Apply individually
 - Apply Profile Group

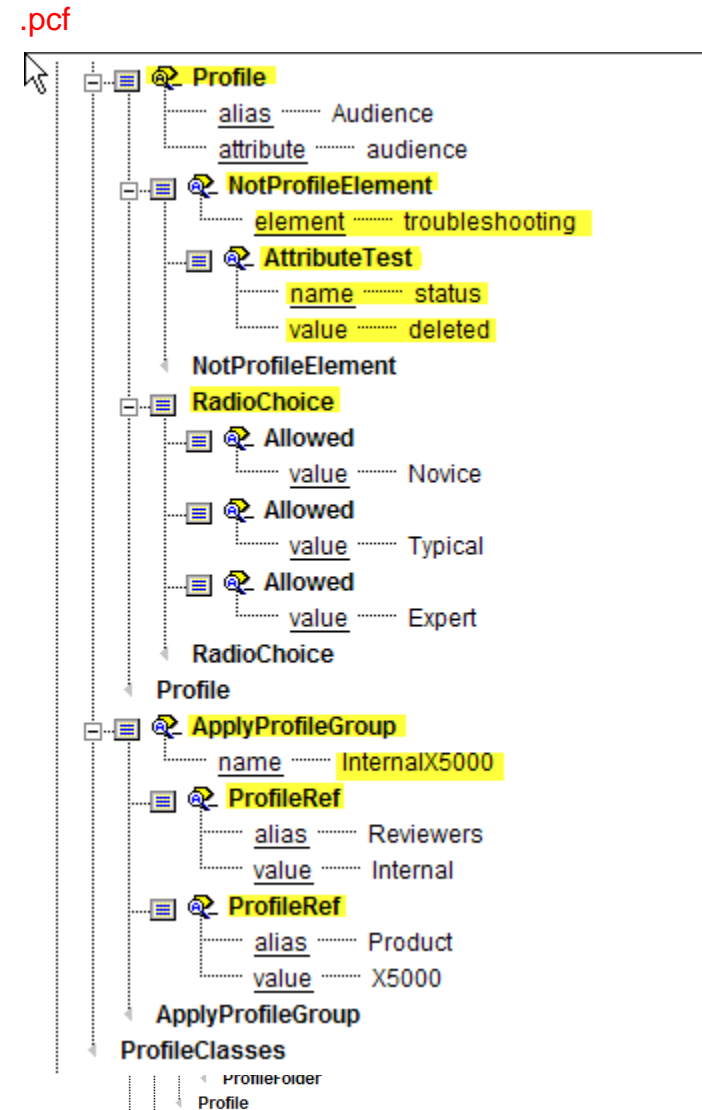
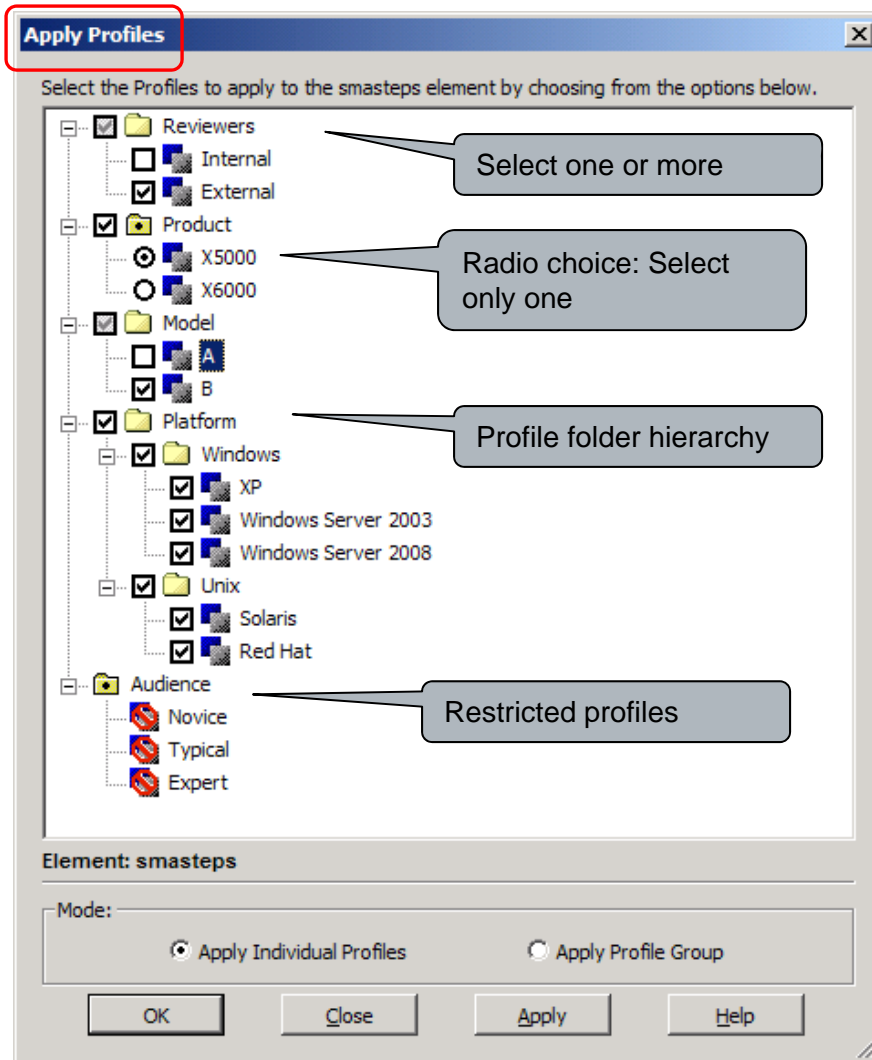


Profiling Capabilities



- Named profiles
- Logical expressions

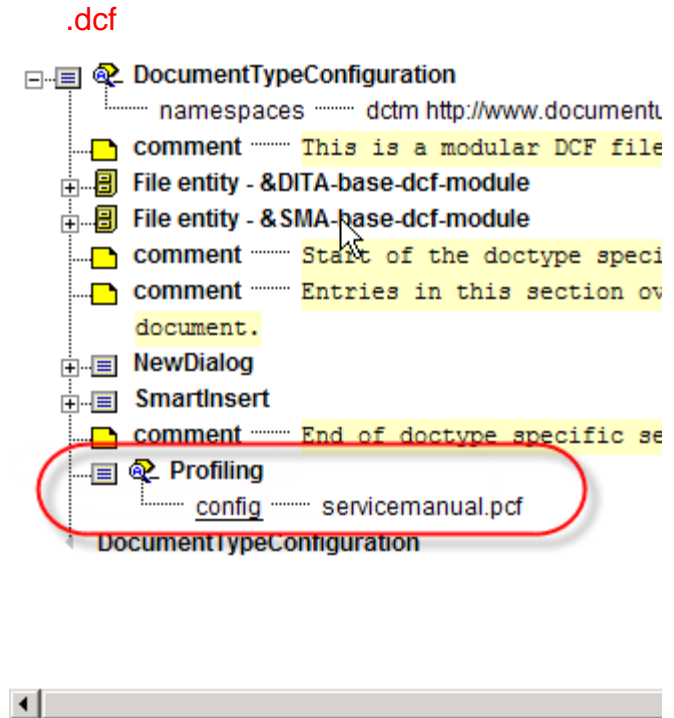
Configuring Apply Profile Classes for Authoring



Configuration

.pcf is an XML configuration file that defines the value that can be applied

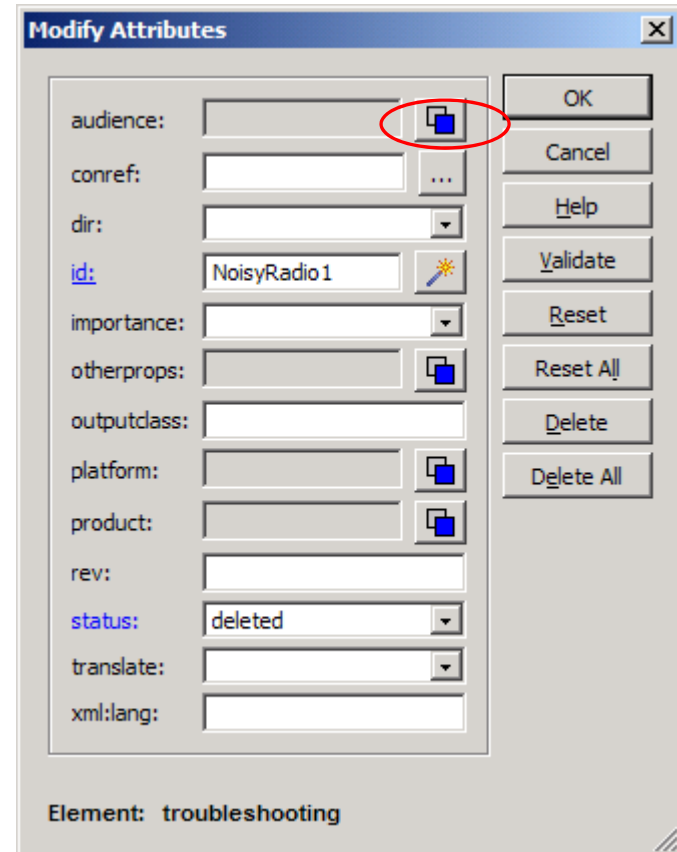
- The Document Configuration file (.dcf) specifies which .pcf file to use
- Individual document types reference the .pcf file
- Multiple document types can reference a single .pcf file.
- environment variable
- .pcf defines the separator character




Profiling Attributes

Designate profiling attributes in .dcf

- View profiling attribute in the Modify Attributes dialog box, Document Map, and Column view
- Only change the value of the attribute in the Apply Profiles dialog box
- In the Document Map and Column view, the Apply Profiles dialog box opens when you click on a profiling attribute
- Attributes set as profiling attributes must also be contained in the document type's .pcf
- Forces users to use Apply Profile dialog so that they cannot author arbitrary values




Modify Attributes


audience: 

conref: ...


dir:


id: 

importance:

otherprops: 

outputclass:

platform: 

product: 

rev:

status:

translate:

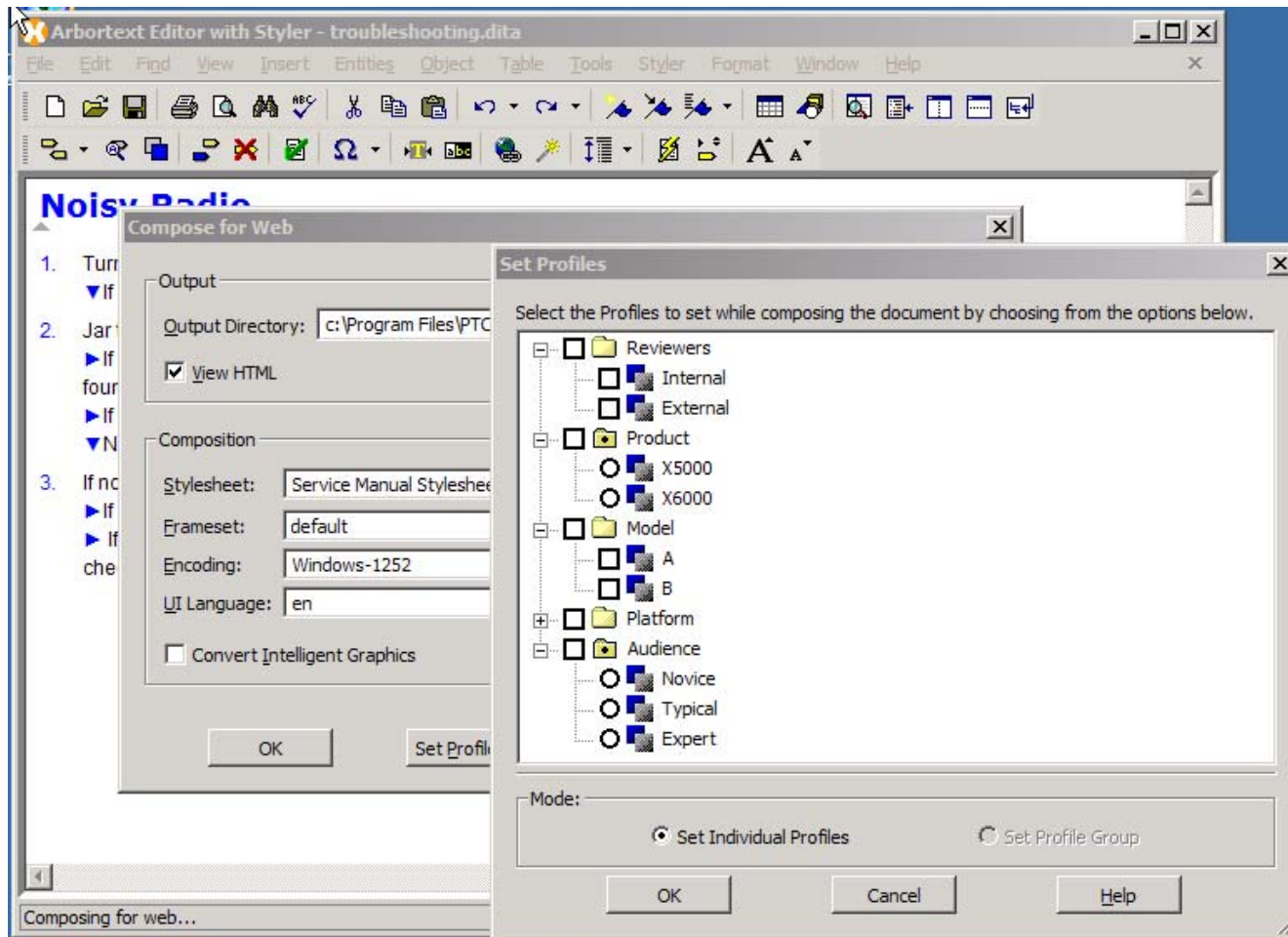
xml:lang:

OK Cancel Help Validate Reset Reset All Delete Delete All

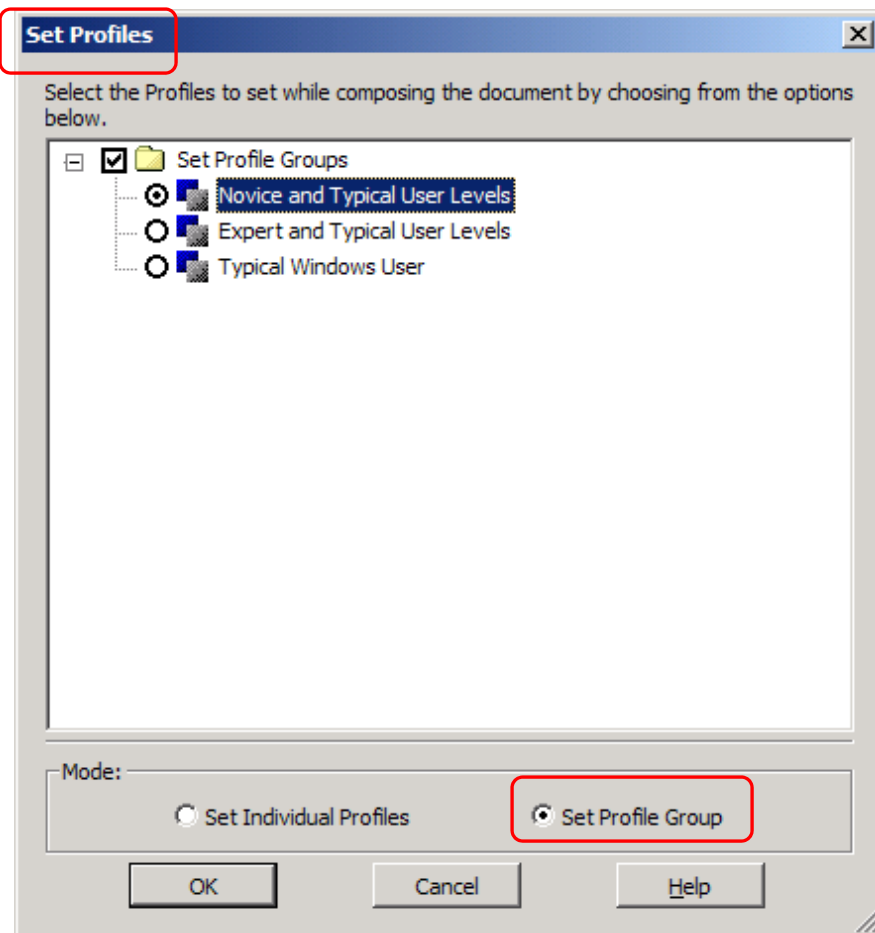
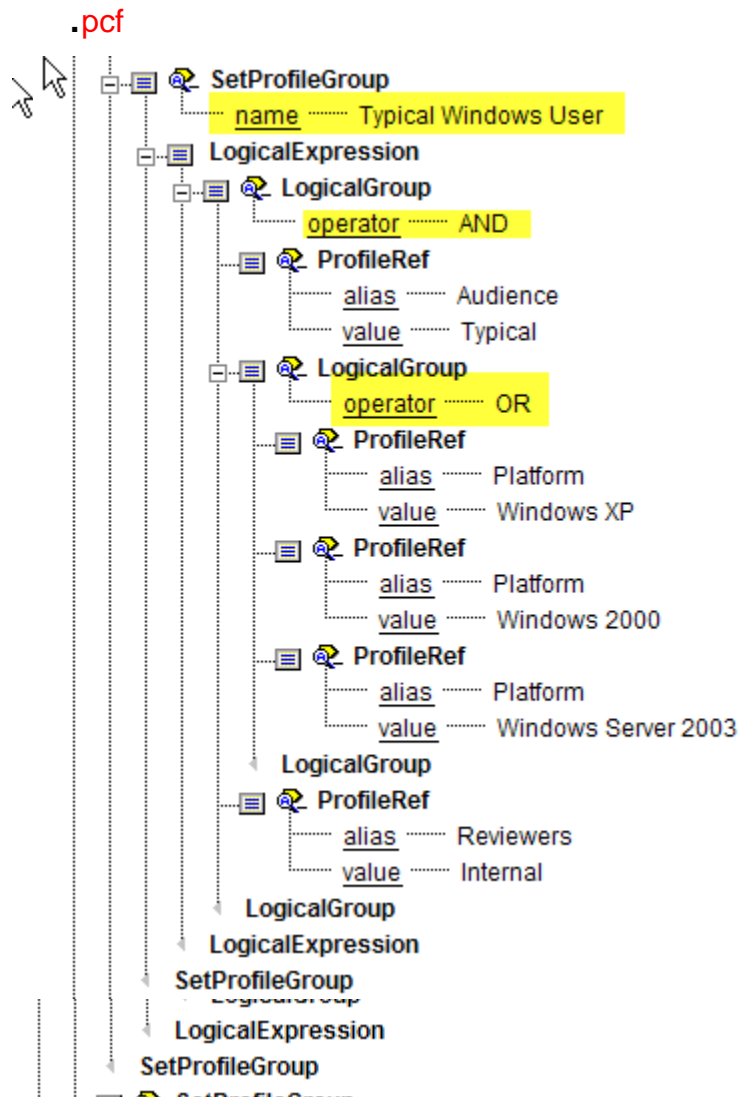
Element: troubleshooting

Filter When Publishing

- During publishing, the user selects applicable profiles to control what content appears in output
- Arbortext Composition Pipeline filters out irrelevant content and assembles a custom publication



Configuring Set Profiles Groups for Composition



The <LogicalGroup> element has the operator attribute that specifies the logical operator to use

- operator = AND | OR | XOR | EQUAL
- For example, the operators have the following resolutions when comparing values A and B:
 - AND — A logical conjunction
 - The expression is true if both A and B are true
 - OR — A logical disjunction (an inclusive OR)
 - The expression is true if A, B, or both, are true
 - XOR — A logical inequivalence (an exclusive OR)
 - The expression is true if either A or B is true, but false if both A and B are true
 - EQUAL — A logical equivalence
 - The expression is true if both A and B are true, or if both are false

The <LogicalNOT> element specifies logical negation of an expression.

- For example, for value A, the expression is true if A is false and the expression false if A is true

Profiling Best Practices

Profiling Tips for Faster Processing

- Create profiles so that general information does not require that any profiles are applied
- Determine whether it will be more work to profile a document to include elements or exclude elements
 - For example, it may create less work for authors if you create a NOT Model 123 profile instead of a Model 123 profile
- Avoid creating profiles that are subsets of one another
 - For example, there is no need to profile general information:
 - General Employees
 - Managers
 - Trainees
 - Only create profiles for:
 - Managers
 - Trainees

References

Arbortext Help Center

- Set User Role profile to either Administrator or Developer

Arbortext Customizer's Guide

- Customizing your site's profiling configuration

