



# HOTEL INTER-CONTINENTAL BARCELONA

[Rates & Reservations](#)

[Home Page & Offers](#)

[Location Information](#)

[Rooms & Suites](#)

[Dining & Entertainment](#)

[Banquets & Meetings](#)

[Facilities & Activities](#)

[Introduction](#)

[Floor Plans](#) <

[Capacities](#)

[Dimensions](#)

[Room Finder](#)

[Function Rooms](#)

[Audio-Visual Equipment](#)

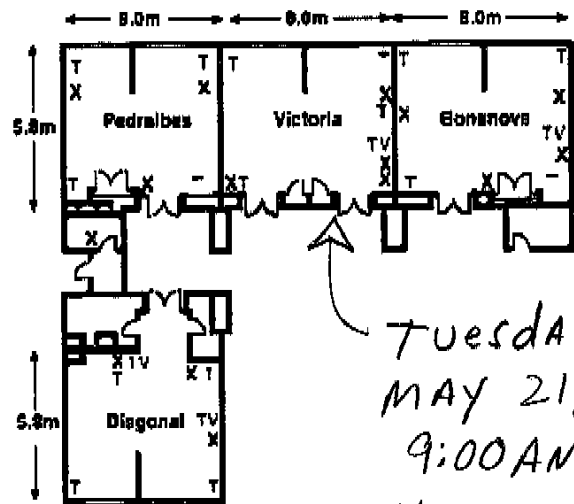
[Theme Party](#)

[Image Tour](#)

[Sample Menus](#)

[Request for Proposal](#)

Pedralbes, Victoria, Bonanova and Diagonal



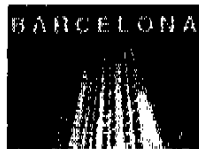
Tuesday  
MAY 21, 2002  
9:00AM  
VICTORIA ROOM  
INTER-CONTINENTAL HOTEL

X = Power point T = Telephone point TV = Television socket

[Update Profile](#)

[Home Page](#)

Princesa Sofia Inter-Continental Barcelona : Spain



HOTEL  
INTER-CONTINENTAL  
BARCELONA

[Rates & Reservations](#)

[Home Page & Offers](#)

[Location Information](#)

[Rooms & Suites](#)

[Dining & Entertainment](#)

[Banquets & Meetings](#)

[Facilities & Activities](#)

[Introduction](#) <

[Transfers & Directions](#)

[Map](#)

[Weather Forecast](#)

[Currency](#)

[Conclerge](#)



[Update Profile](#)

[Home Page](#)

## Location Information

Hotel Princesa Sofia Inter-Continental, a five-star hotel, is located on the renowned Diagonal Avenue in the heart of the business, residential and exclusive shopping district of Barcelona. The Hotel's superb location allows easy access to the historic city centre and the airport by road and public transport.

Princesa Sofia Inter-Continental Barcelona : Spain



## HOTEL INTER-CONTINENTAL BARCELONA

[Rates & Reservations](#)
[Home Page & Offers](#)
[Location Information](#)
[Rooms & Suites](#)
[Dining & Entertainment](#)
[Banquets & Meetings](#)
[Facilities & Activities](#)
[Introduction](#)
[Transfers & Directions](#)
[Map](#)
[Weather Forecast](#)
[Currency](#)
[Concierge](#)

[Update Profile](#)

### Transfers & Directions

#### Distances to / from the hotel

- Transportation to the International Airport: approximately 15 kilometres - 15 minutes by taxi / car and 30 minutes by train (Airport-chauffeur service available)
- City centre: approximately two kilometres
- Beach: approximately four kilometres
- Underground (Metro) station: five minutes' walking distance
- Bus stop: next to the hotel
- Nearest railway station: five minutes by subway
- Passeig de Gracia: approximately three kilometres

These driving directions are provided as a rough guideline only. Please contact the hotel to verify the location and directions.

### Transportation

Our Concierge will be pleased to assist you with the following services:

- Limousine hire
- Car, van, minicoach, coach, bicycles, and motorcycle rental
- Taxi

### Public Transport:

The underground is the fastest and cheapest way to travel within Barcelona, but we can also recommend the use of city buses and taxis.

- Underground (Metro) station: five minutes' walking distance from the hotel - line 3 (Green line)  
(T Dia passes are the ideal way to tour the city since they offer one, three or five days of unlimited travelling)
- Bus stops are located next to the hotel  
(T Dia passes are the ideal way to tour the city since they offer one, three or five days of unlimited travelling)
- Bus touristic: Blue line, Red line,
- Train: Sants Station for national and international trips



HOTEL  
INTER-CONTINENTAL  
BARCELONA

[Rates & Reservations](#)

[Home Page & Offers](#)

[Location Information](#)

[Rooms & Suites](#)

[Dining & Entertainment](#)

[Banquets & Meetings](#)

[Facilities & Activities](#)

[Introduction](#)

[Transfers & Directions](#)

[Map](#) <

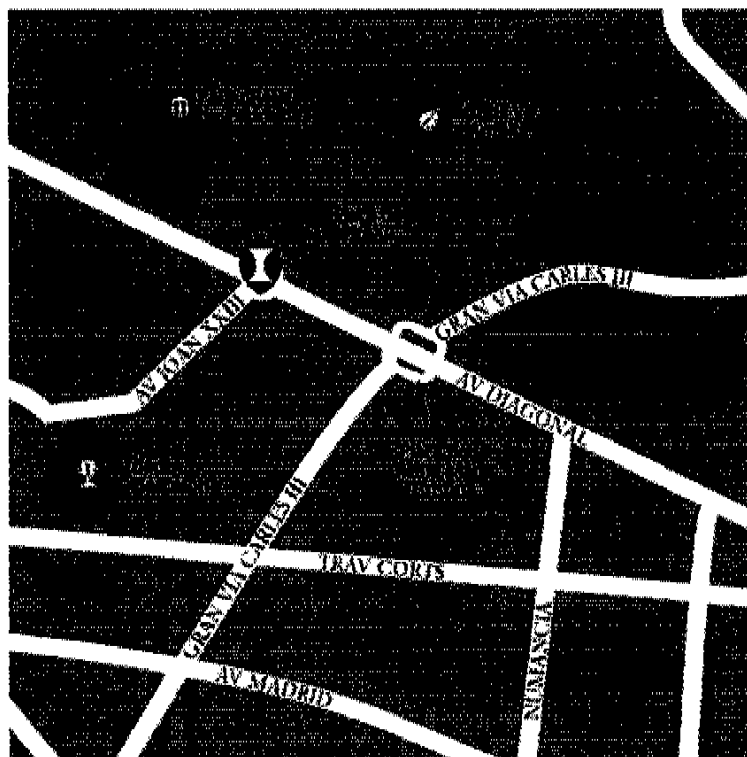
[Weather Forecast](#)

[Currency](#)

[Concierge](#)



[Update Profile](#)



[Home Page](#)

Princesa Sofia Inter-Continental Barcelona : Spain



HOTEL  
INTER-CONTINENTAL  
BARCELONA

[Rates & Reservations](#)

[Home Page & Offers](#)

[Location Information](#)

[Rooms & Suites](#)

[Dining & Entertainment](#)

[Banquets & Meetings](#)

[Facilities & Activities](#)

[Introduction](#)

[Transfers & Directions](#)

[Map](#)

[Weather Forecast](#)

[Currency](#)

[Concierge](#) <



[Update Profile](#)

## Concierge Information

### Attractions

- **Aquarium** - The most important Mediterranean collection in the world
- **Picasso Museum** - One of Barcelona's most visited museums
- **Guell Park** - Gaudi's most colourful creation
- **Sagrada Familia** - Europe's most unconventional church, Gaudi's greatest work - 4 ½ kilometres
- **La Pedrera, Casa Batlló** - Gaudi's houses. Located in Paseo de Gracia
- **Las Ramblas** - Barcelona's most characteristic avenue - approximately 4 kilometres
- **Gran Teatro del Liceu** - One of the finest opera houses in Europe
- **Columbus Monument** - 19th century monument to Christopher Columbus
- **Gothic Cathedral** - A beautiful example of Catalan Gothic architecture
- **Gothic Quarters** - Ancient fortifications and temple to Augustus built by the Romans on Mount Taber
- **Plaza Sant Jaume** - Town Hall, located in the Gothic Quarters
- **Dali Museum** - The most visited museum in Spain after the Prado in Madrid
- **Illuminated Fountain Magica** - An impressive display of sound and colour
- **Montjuic Panorama** - 570-foot high mountain of Montjuic - approximately 2 ½ kilometres
- **Maremagnum** - Barcelona's newest entertainment venue
- **Monastery of Montserrat** - The mountain and 11th-century Benedictine monastery
- **Costa Brava** - Pine-backed sandy coves, golden beaches and modern resorts
- **Port Aventura** - Theme park situated between Salou and Vilaseca (around 100 kilometres south of Barcelona)
- **Golf** - Magnificent courses located around Barcelona
- **Olympic village** - approximately 2½ kilometres

