



Travel should take you places®

**Location**

The ideal destination, the Hilton Baltimore is neatly situated in Baltimore's scenic Inner Harbor, adjacent to Oriole Park at Camden Yards. Directly linked by covered pedestrian sky bridge to the Baltimore Convention Center. Located near many of the city's leading historic and cultural attractions including the National Aquarium, Maryland Science Center, M&T Stadium (home to the Baltimore Ravens), Fort McHenry, as well as exclusive shopping and restaurants.

**Services**

- Knowledgeable Concierge staff
- Room Service with extensive menu
- Professional valet laundry & dry-cleaning
- Garage on premise, providing self or 24-hour valet parking
- Expert conference and events services team
- Professional audio/video staff



**Hilton Baltimore**

**Pre-Opening Sales Office:**

7 E. Redwood Street, 2nd Floor  
Baltimore, MD 21202

Tel: (443) 573-8700 • Fax: (443) 573-8799  
baltimore.hilton.com

**OPENING AUGUST 2008**

**Hilton Baltimore**

401 West Pratt Street  
Baltimore, MD 21201

Tel: (443) 573-8700 • 1-800-HILTONS  
baltimore.hilton.com

GDS Codes: Amadeus: BWI212  
Apollo/Galileo: 32827  
Sabre/WorldSpan: 43569



**Accommodations**

- 757 well appointed guest rooms including 20 luxury and hospitality suites (10 with balcony views), all with stylish contemporary decor
- Executive Level accommodations feature private Concierge and use of Executive Lounge; complimentary continental breakfast and hors d'oeuvres at cocktail hour for Executive Level guests
- All guest rooms feature the Hilton Serenity Collection™ with Suite Dreams® plush-top mattress, down duvet and pillows and exclusive Crabtree & Evelyn La Source® bath amenities
- Sizeable work stations, ergonomic desk chair, eye-level plug-ins
- Wired & wireless High-speed Internet access in all guest rooms
- Large flat screen televisions with on-demand entertainment
- Dual line phone with voicemail and data port, Hilton Family Alarm Clock with MP3 capability
- Cuisinart® dual-cup, single-brew coffeemaker and Lavazza® coffee from Italy
- Personal iron, ironing board and hairdryer
- Electronic door locks
- Complimentary USA Today® each weekday morning

**Facilities**

- 60,000 sq. ft. of flexible function space including 25,000 sq. ft. Key Ballroom, 15,000 sq. ft. Holiday Ballroom, and additional 20,000 sq. ft. of meeting space
- High-speed Internet access, data, voice, and visual transmission in all meeting rooms
- 24-hour Business Center
- Heated indoor pool, sauna & whirlpool
- Hilton Fitness by Precor USA® featuring premium cardiovascular and strength training equipment with entertainment; core training, balance, and stretch accessories
- Casual yet upscale all-day dining featuring premier American cuisine, large screen television and full bar
- Comfortable Lobby Bar is an all day refuge providing cocktails, microbrews, and wine
- ADA accessible

**Hilton HHonors®**

- Hilton HHonors is the only guest reward program that lets you earn both hotel points and airline miles for the same stay at more than 2,900 hotels worldwide.
- With the Hilton HHonors Event Planner program, Event Planners can earn Points & Miles® for qualifying events. Ask your salesperson for details.

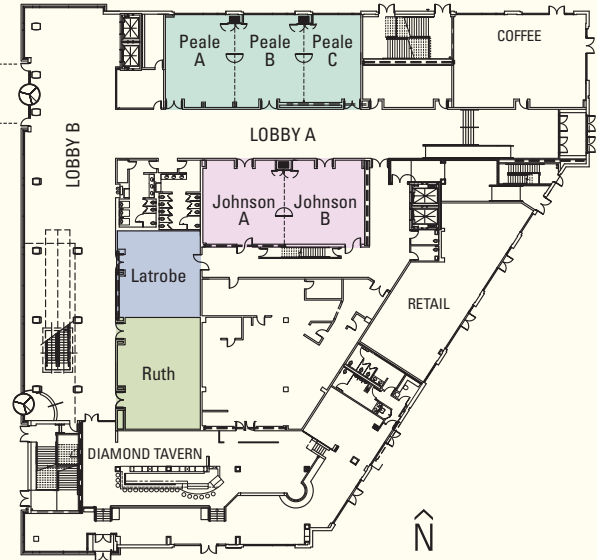
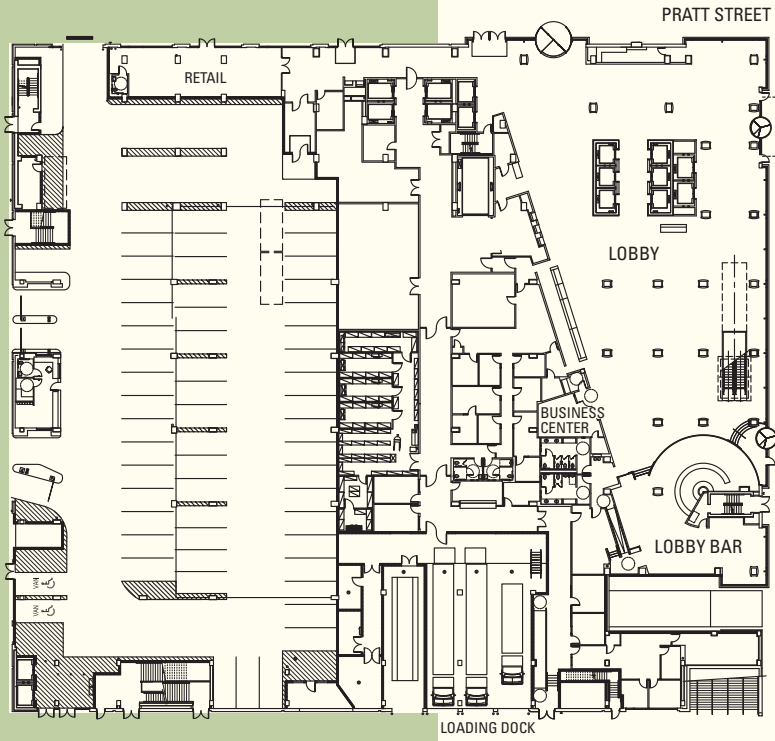


**Reservations**

For your next meeting, call Hilton Direct® at 1-800-321-3232, or the Hilton Baltimore Sales Office at (433) 573-8700 or visit baltimore.hilton.com.



# LEVEL 1



## Level 1

	LX WX H	AREA	RECEPTION	BANQUET (R-10)	CONFERENCE	THEATER	SCHOOL ROOM (3 PER 6)	U-SHAPE
Lobby A	138 x 19 x 14'	2,622	262	—	—	—	—	—
Lobby B	86 x 35 x 14'	3,010	301	—	—	—	—	—
Diamond Tavern	98 x 44 x 14.9'	2,600	260	—	—	—	—	—

## Meeting Rooms

Peale A	34 x 27 x 14'	918	92	60	32	135	60	41
Peale B	34 x 27 x 14'	918	92	60	32	135	60	41
Peale C	34 x 22 x 14'	748	75	50	32	108	54	36
Johnson A	33 x 31 x 14'	1,023	102	80	32	144	60	38
Johnson B	33 x 31 x 14'	1,023	102	80	32	144	60	38
Latrobe	33 x 31 x 14'	1,023	102	80	32	144	60	38
Ruth	43 x 32 x 14'	1,376	138	110	42	162	84	49

Meeting room capacities are pre-opening estimates and may change upon completion.



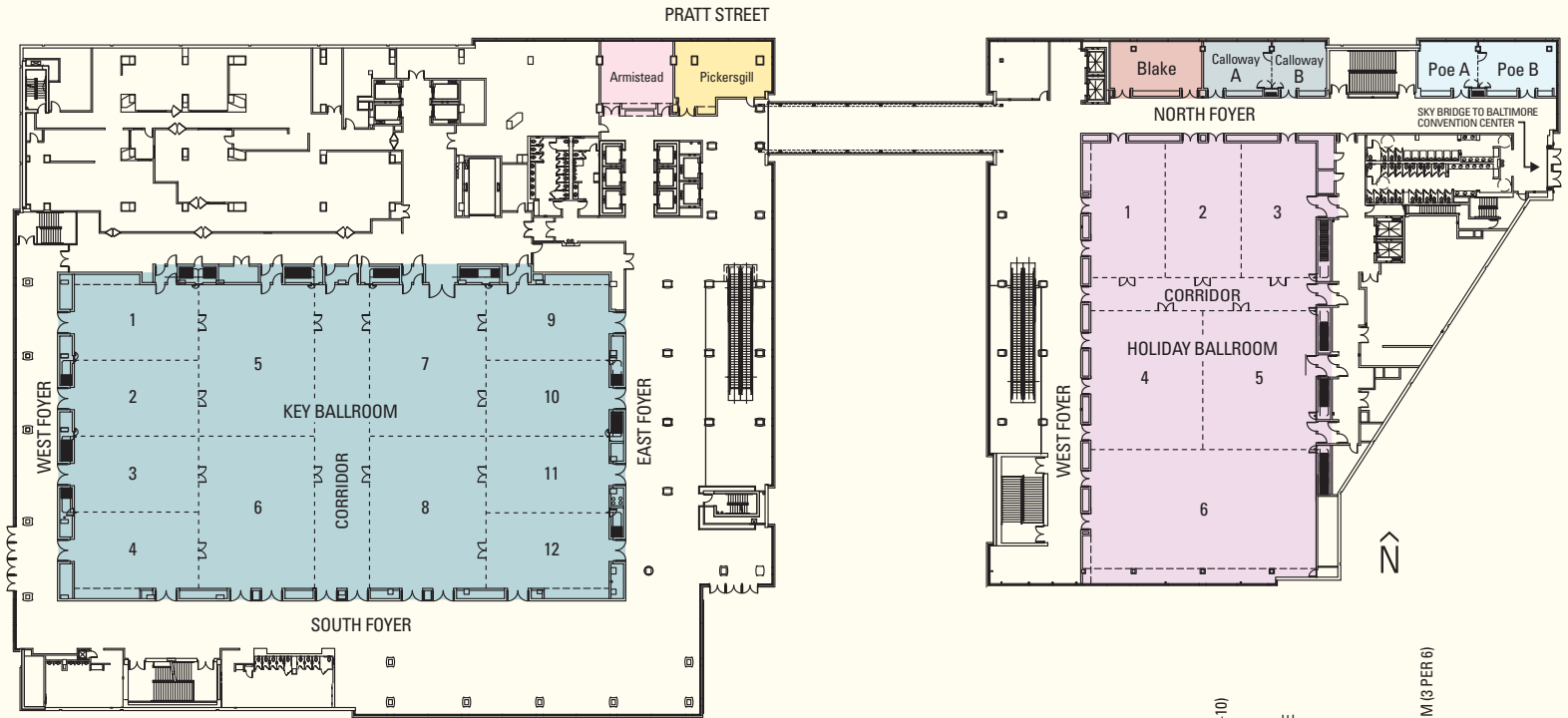
Lobby



Lobby Bar



# LEVEL 2



Key Ballroom	L X W X H	AREA	RECEPTION	BANQUET (R-10)	CONFERENCE	THEATER	SCHOOL ROOM (S PER 6)	U-SHAPE
Key Ballroom	208 x 118 x 24'	24,544	2,454	2,140	—	2,962	1,554	—
Key 1	48 x 33 x 24'	1,537	158	130	46	216	96	56
Key 2	48 x 29 x 24'	1,392	139	130	46	208	96	53
Key 3	48 x 29 x 24'	1,392	139	130	46	208	96	53
Key 4	48 x 33 x 24'	1,584	158	130	46	216	96	56
Key 5	59 x 45 x 24'	2,655	266	220	56	416	180	71
Key 6	59 x 45 x 24'	2,655	266	220	56	416	180	71
Key 7	59 x 45 x 24'	2,655	266	220	56	416	180	71
Key 8	59 x 45 x 24'	2,655	266	220	56	416	180	71
Key 9	48 x 33 x 24'	1,584	158	130	46	216	96	56
Key 10	48 x 29 x 24'	1,392	139	130	46	208	96	53
Key 11	48 x 29 x 24'	1,392	139	130	46	208	96	53
Key 12	48 x 33 x 24'	1,584	158	130	46	216	96	56
Corridor	118 x 16 x 24'	1,888	202	170	—	—	—	—
East Foyer	140 x 31 x 13.6'	4,340	434	—	—	—	—	—
South Foyer	142 x 44 x 13.6'	6,248	625	—	—	—	—	—
West Foyer	139 x 16 x 13.6'	2,224	222	—	—	—	—	—

Holiday Ballroom	L X W X H	AREA	RECEPTION	BANQUET (R-10)	CONFERENCE	THEATER	SCHOOL ROOM (S PER 6)	U-SHAPE
Holiday Ballroom	171 87 x x 24'	14,877	1,488	1,240	—	1,958	930	—
Holiday 1	52 x 29 x 24'	1,508	151	120	50	208	96	57
Holiday 2	52 x 29 x 24'	1,508	151	120	50	208	96	57
Holiday 3	52 x 29 x 24'	1,508	151	120	50	208	96	57
Holiday 4	44 x 53 x 24'	2,325	233	190	50	336	144	60
Holiday 5	44 x 52 x 24'	2,325	233	190	50	336	144	60
Holiday 6	87 x 52 x 24'	4,850	485	390	84	588	336	84
Corridor	13.5 x 87 x 24'	1,175	84	60	—	—	—	—
North Foyer	185 x 14 x 13.6'	2,590	259	—	—	—	—	—
West Foyer	64 x 44 x 13.6'	2,816	282	—	—	—	—	—

Meeting Rooms	L X W X H	AREA	RECEPTION	BANQUET (R-10)	CONFERENCE	THEATER	SCHOOL ROOM (S PER 6)	U-SHAPE
Armistead	28 x 26 x 13.6'	728	73	50	26	56	36	32
Pickersgill	38 x 22 x 13.6'	836	84	60	36	108	81	41
Blake	36 x 19 x 13.6'	684	68	50	34	80	36	36
Calloway A	26 x 19 x 13.6'	494	49	40	24	60	24	26
Calloway B	21 x 19 x 13.6'	399	40	30	20	50	18	22
Poe A	23 x 19 x 13.6'	437	44	30	20	50	18	22
Poe B	30 x 19 x 13.6'	570	57	40	28	40	30	32

Skybridge	88 x 17 x 13.6'	1,496	150	—	—	—	—	—
-----------	-----------------	-------	-----	---	---	---	---	---

Meeting room capacities are pre-opening estimates and may change upon completion.



Key Ballroom

# LEVEL 3



### Level 3

	LXWXH	AREA	RECEPTION	BANQUET (R-10)	CONFERENCE	THEATER	SCHOOL ROOM (3 PER 6)	U-SHAPE
East Foyer	137 x 14 x 11.8'	1,918	192	—	—	—	—	—
South Foyer	217 x 15 x 11.8'	3,255	326	—	—	—	—	—

### Meeting Rooms

Brent	40 x 17 x 11.1'	680	68	70	38	90	36	46
Chase	26 x 16 x 11.1'	416	42	30	24	54	24	26
Hopkins	26 x 19 x 11.1'	494	49	30	24	54	24	26
Douglass	40 x 19 x 11.1'	760	76	70	38	100	36	40
Stone	26 x 19 x 11.1'	494	49	30	24	60	24	26
Tilghman	26 x 19 x 11.1'	494	49	30	24	60	24	26
Tubman A	28 x 23 x 11.1'	644	64	50	20	80	36	28
Tubman B	28 x 23 x 11.1'	644	64	50	20	80	36	28
Carroll A	28 x 23 x 11.1'	644	64	50	20	80	36	28
Carroll B	28 x 23 x 11.1'	644	64	50	20	80	36	28
Marshall	35 x 22 x 11.1'	770	77	60	34	108	54	38
Paca A	37 x 20 x 11.1'	740	74	60	36	100	54	40
Paca B	37 x 20 x 11.1'	740	74	60	36	100	54	40

Meeting room capacities are pre-opening estimates and may change upon completion.



The Hilton HHonors Event Planner bonus is valid for new event bookings only and is awarded at the discretion of the hotel and may not be awarded on all group business events. Other restrictions may apply. For complete Event Planner Terms and Conditions, visit [hiltonhhonors.com](http://hiltonhhonors.com). Hilton HHonors® membership, earning of Points and Miles® and redemption of points are subject to HHonors Terms and Conditions. ©2008 Hilton Hotels Corporation 5/08 HSM/Swofford&Co37709

Select images courtesy of the Baltimore Area Convention and Visitors Association.