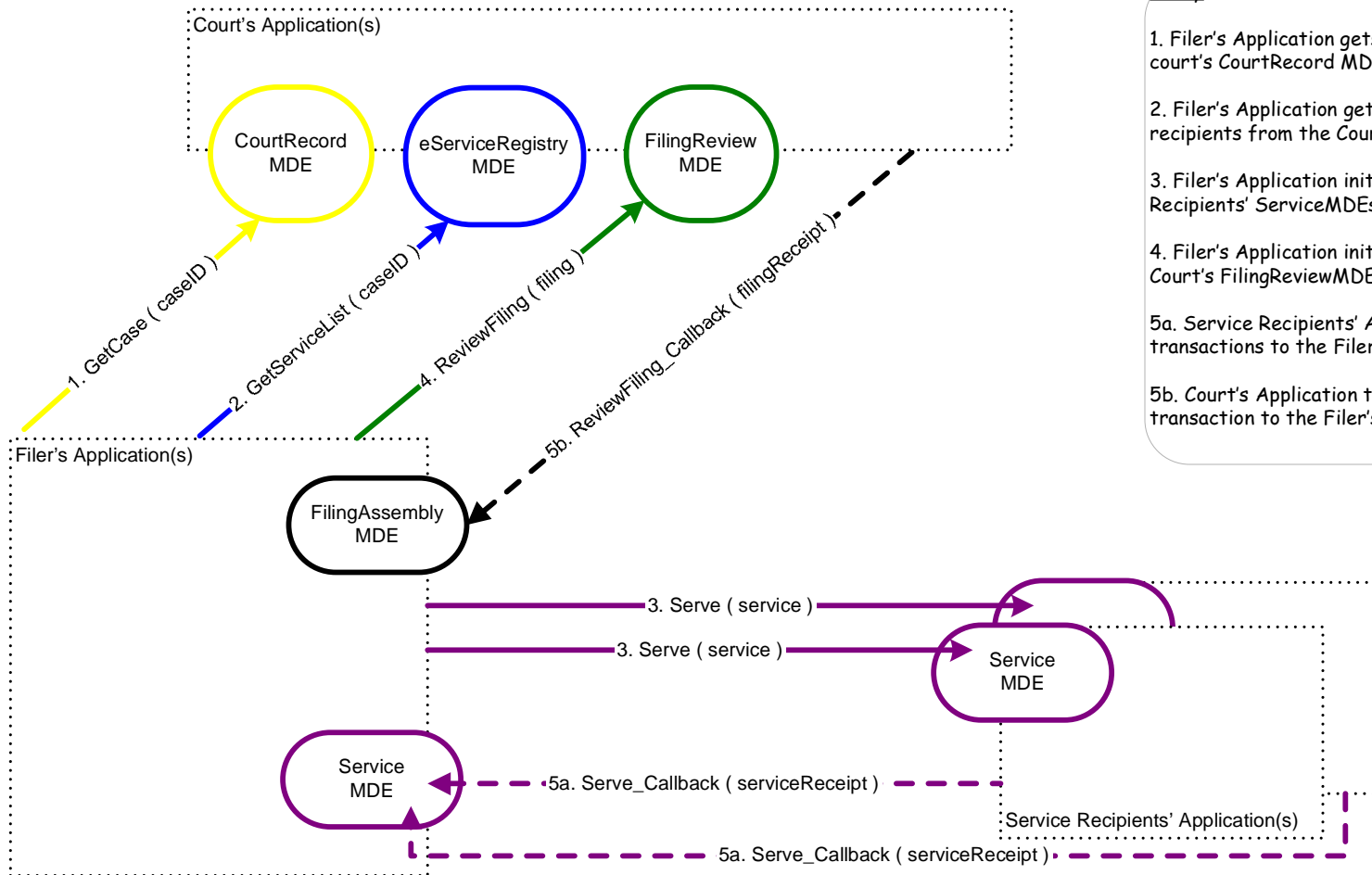


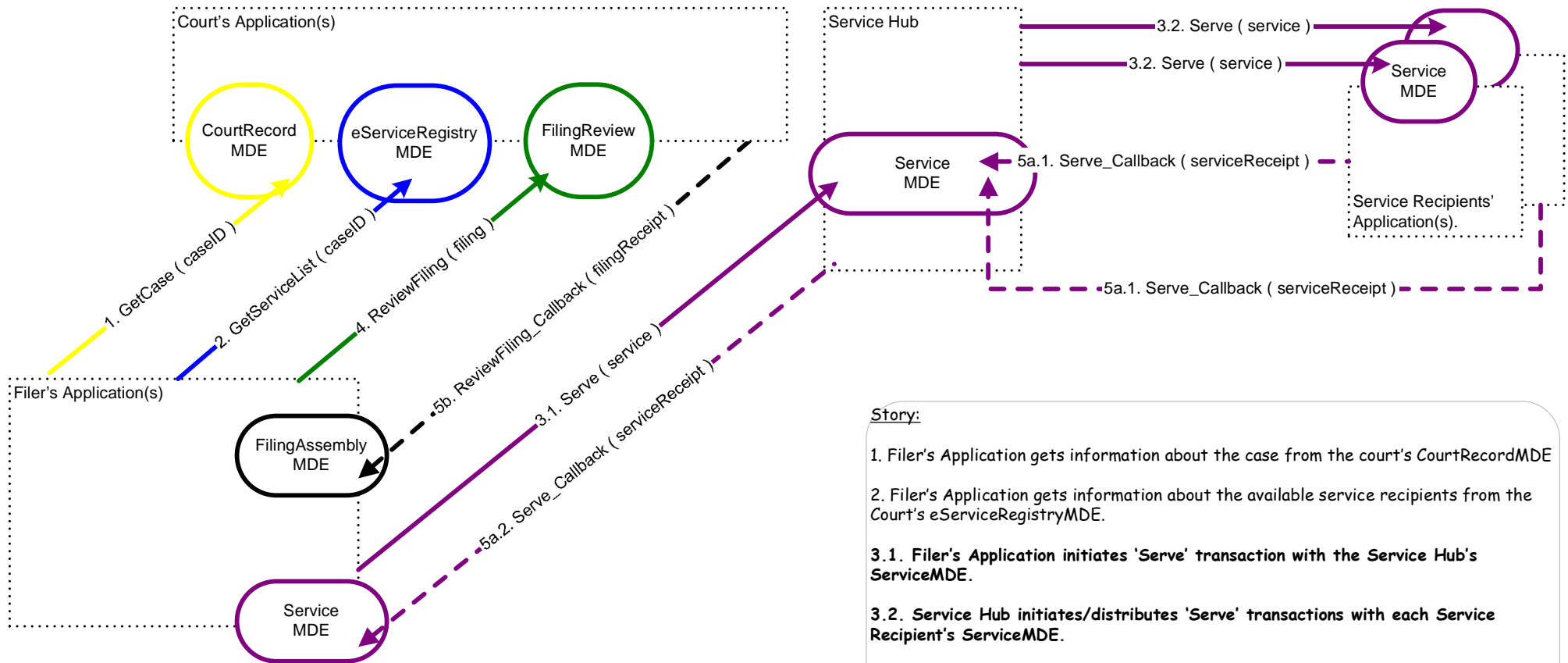
Filing and Service Flow without use of service hub



Story

1. Filer's Application gets information about the case from the court's CourtRecord MDE
2. Filer's Application gets information about the available service recipients from the Court's eServiceRegistry MDE.
3. Filer's Application initiates 'Serve' transactions with the Service Recipients' ServiceMDEs
4. Filer's Application initiates a 'ReviewFiling' transaction with Court's FilingReviewMDE.
- 5a. Service Recipients' Apps transmit the results of the 'Serve' transactions to the Filer's ServiceMDE.
- 5b. Court's Application transmits the results of the 'ReviewFiling' transaction to the Filer's FilingAssemblyMDE.

Filing and Service Flow with use of service hub



Story:

1. Filer's Application gets information about the case from the court's CourtRecordMDE
2. Filer's Application gets information about the available service recipients from the Court's eServiceRegistryMDE.
- 3.1. Filer's Application initiates 'Serve' transaction with the Service Hub's ServiceMDE.
- 3.2. Service Hub initiates/distributes 'Serve' transactions with each Service Recipient's ServiceMDE.
4. Filer's Application initiates a 'ReviewFiling' transaction with Court's FilingReviewMDE.
- 5a.1. Service Recipients' Apps transmit the results of the Service Hub's 'Serve' transactions to the Service Hub's ServiceMDE.
- 5a.2. Service Hub transmits the results of the Filer's 'Serve' transaction to the Filer's ServiceMDE.
- 5b. Court's Application transmits the results of the 'ReviewFiling' transaction to the Filer's FilingAssemblyMDE.

Filing and Service Flow with use of court-hosted service hub

