

## Abstract entities

Answer set	
PK	<u>ASID</u>
	Purpose of answer set

A collection of answers to the questions in the questionset. Tender or qualification would contain this information

Evaluation set	
PK	<u>ESID</u>
FK1	ASID
FK2	EMSID
	AggregatedEvaluation

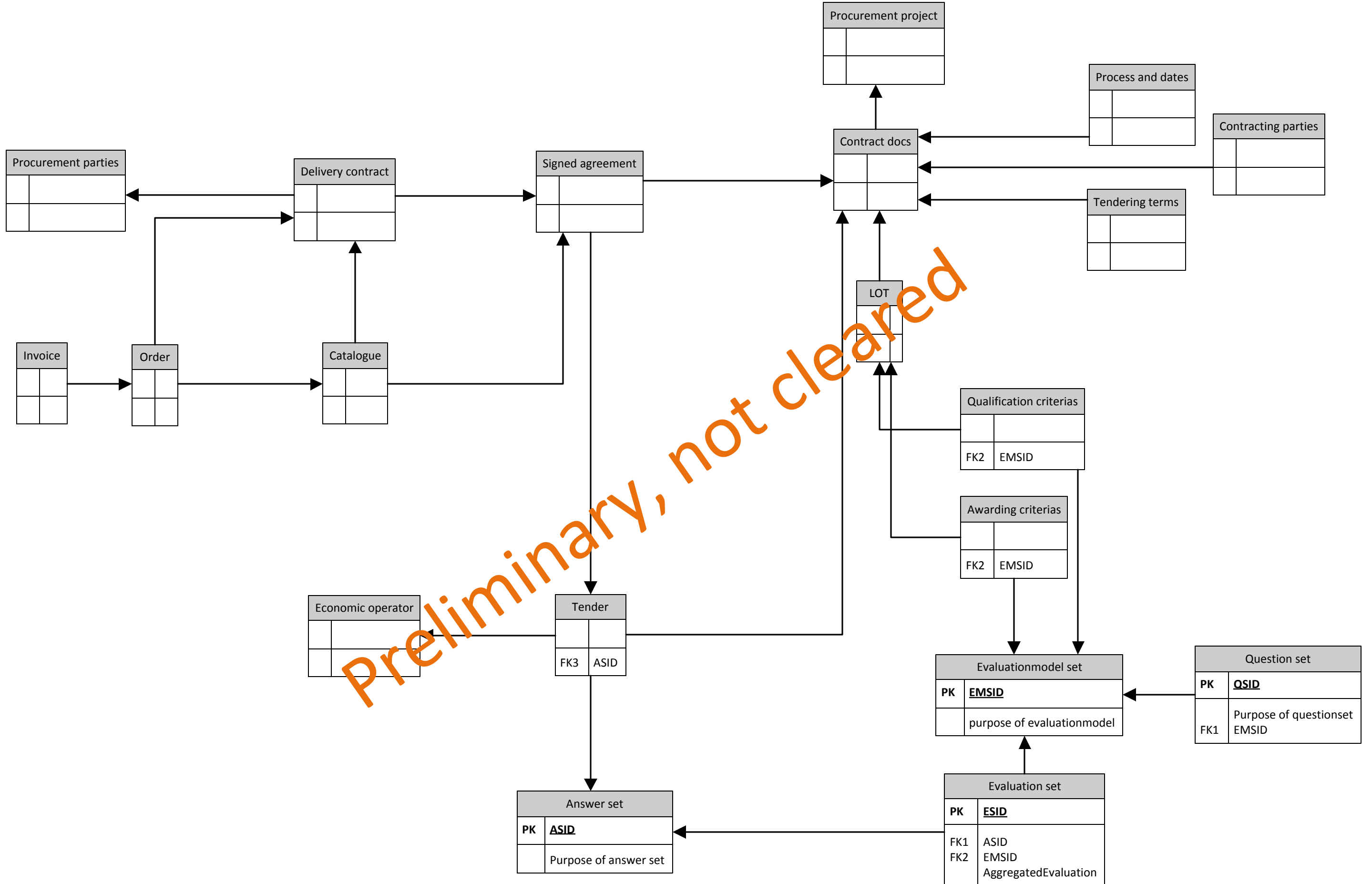
The evaluation of the answerset. This information is typically internal, but could be used in the communication of rejections or acceptance, as the information is specific to oner answerset.

Evaluationmodel set	
PK	<u>EMSID</u>
	purpose of evaluationmodel

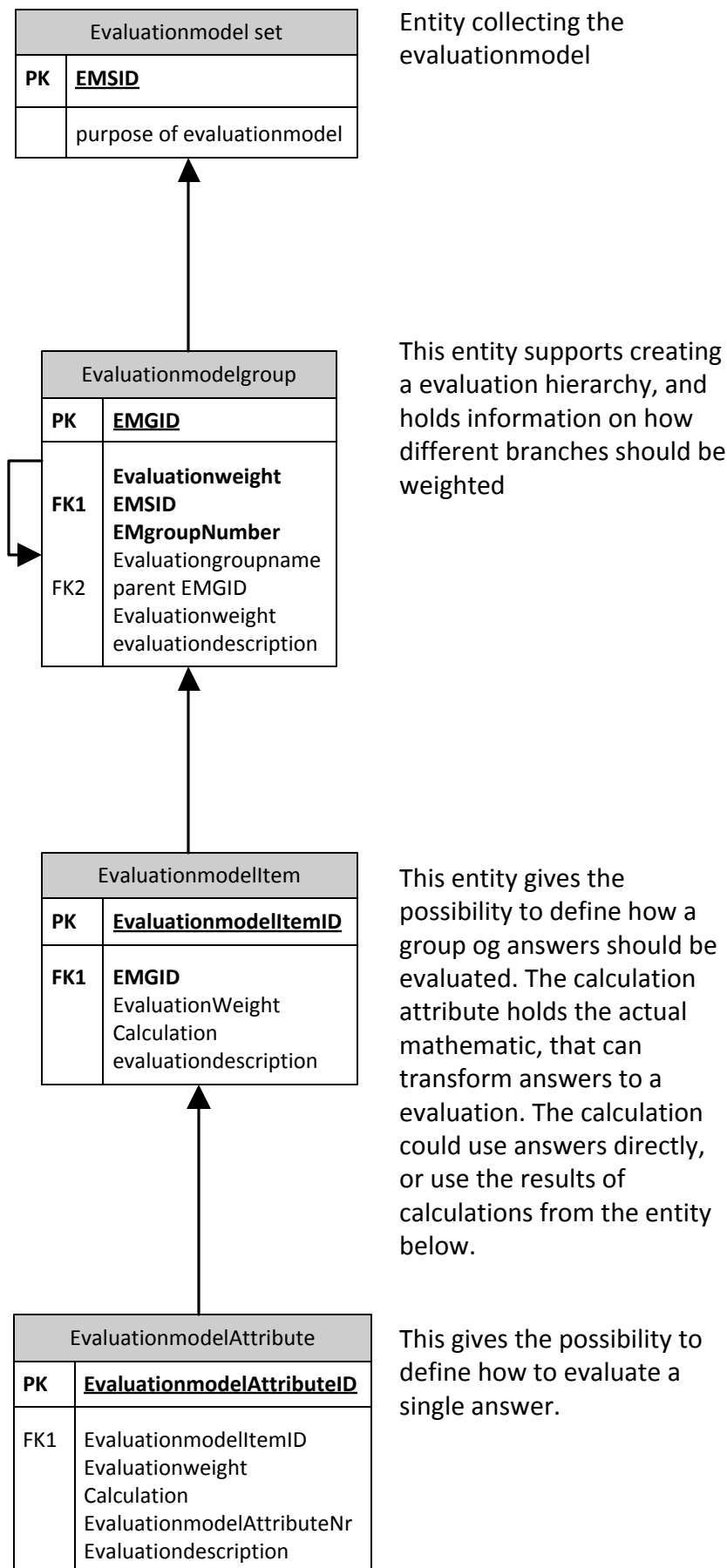
Collection of how to evaluate a questionset. This is typically internal information but could as well be used in e.g. Call for tender to describe how questions are evaluated

Question set	
PK	<u>QSID</u>
FK1	Purpose of questionset
	EMSID

Collection of the questions that should be answered by the economic operators. The collection would be included in the Call for Tender



## Evaluation model



Questions and their answers

Shows the relation between questions and answers.

Question attribute contains the specific questions, that is answered in "Answer" by e.g. the Economic Operator. The link between QuestionAttribute and Answer is represented by 4 specific possible questiontypes.

QuestionItem holds the possibility to group specific question into a more general question. E.g.

QuestionItem: "Specify all your complying products"

QuestionAttribute: "Specify your product identification"

QuestionAttribute: "Specify your productname"

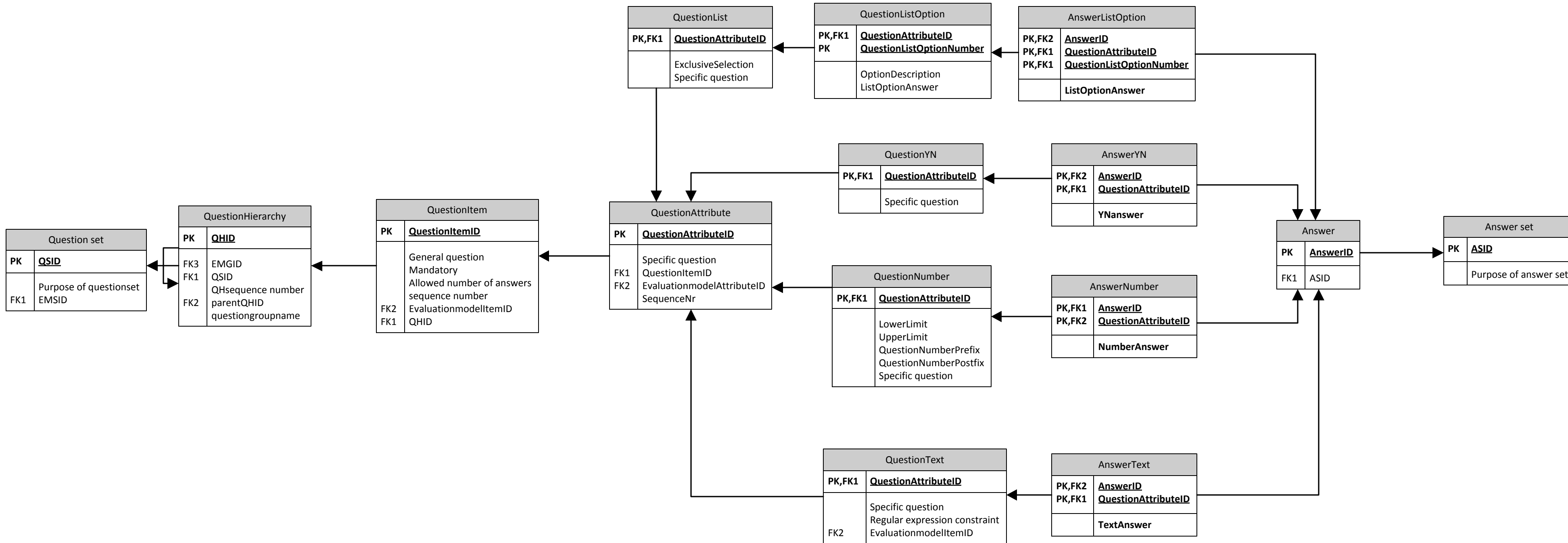
QuestionAttribute: "Specify your productprice"

Asks for answers with this structure:

1007, Black toothbrush, DKK 12,95

1008, Blue toothbrush, DKK 12,95

1009, Red toothbrush, DKK 12,95



All entities

