



Service Provider Roadmap

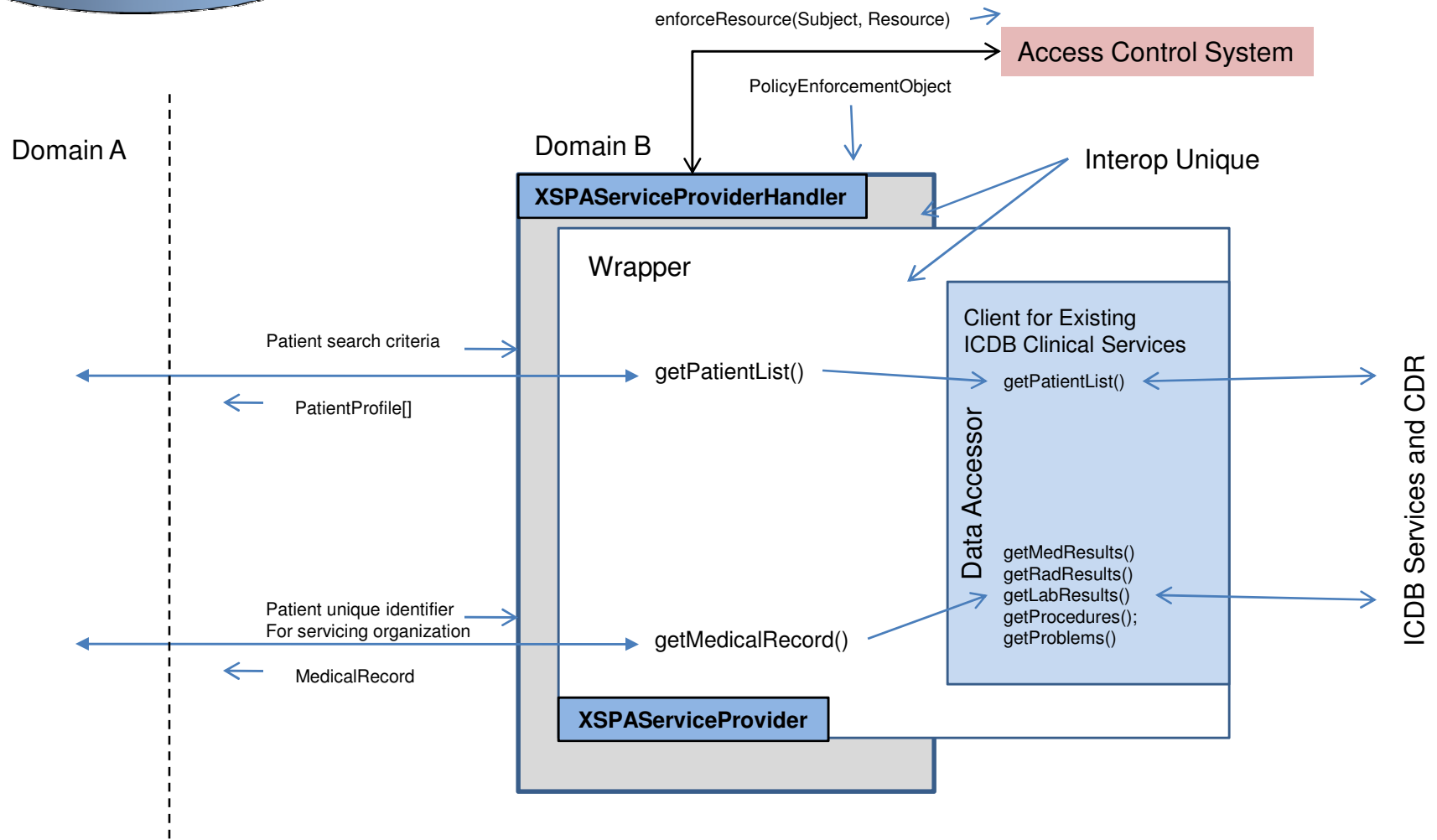
Fine Grain Access Control

- Provides introductory information for Vendors(developers) as reference to Java services and classes which make-up the XSPA Service Provider
- Overview focuses on Application Level access control decision (fine grain)
- Identifies classes that are Interop unique, i.e., SAML vs. WS-Trust Interops
- Identifies Vendor PDP Plug-in Points
- Identifies Plug-in Point For DoDAdaptor and DocumentAssembler
- Identifies changes to service wrapper when using DoDAdapter

Service Provider Endpoints

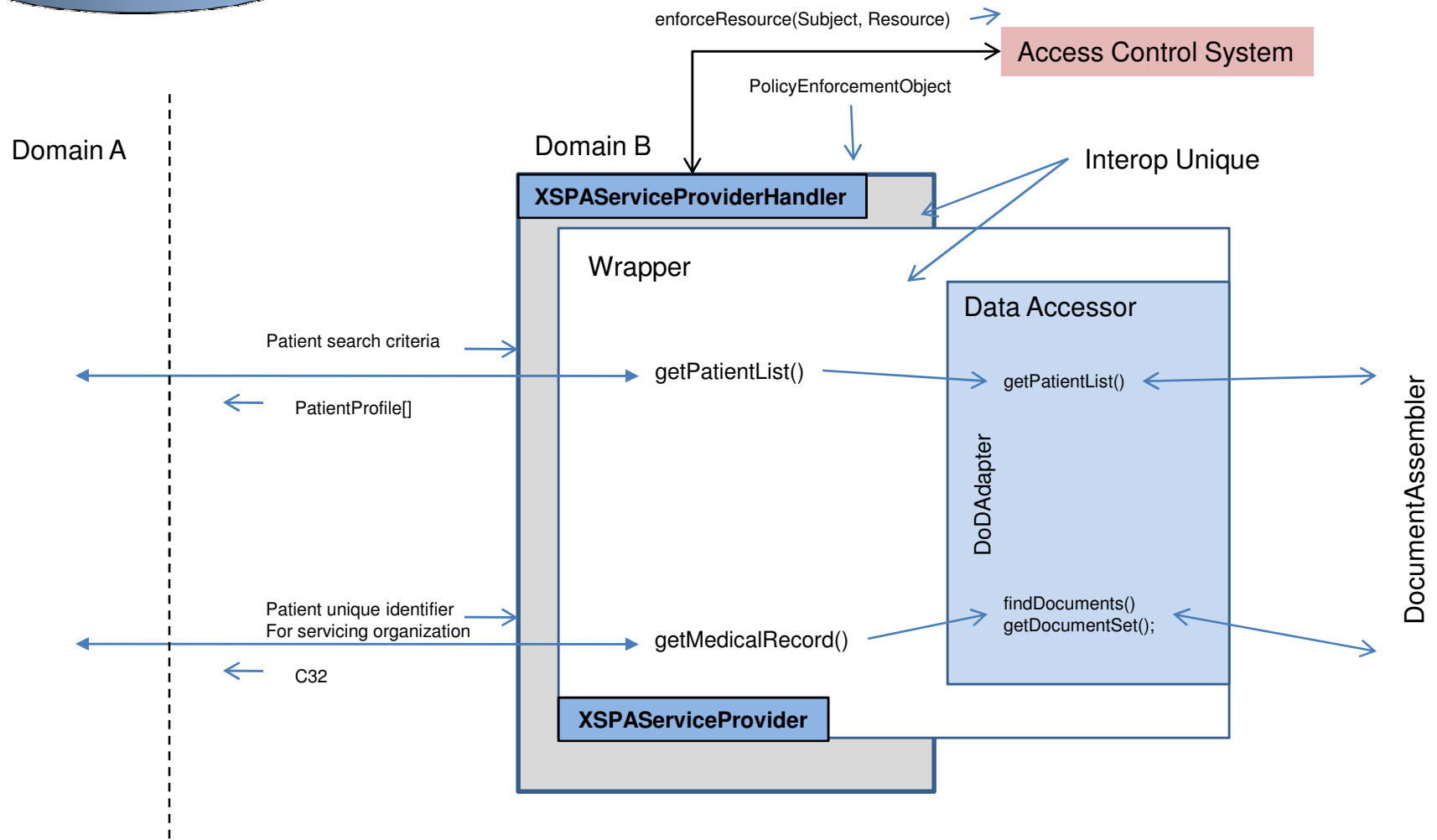
Service	Endpoint
XSPAServiceProvider	http://ipaddress/XSPAInterop/XSPAServiceProviderService
XSPAPolicyEnforcementPoint	http://ipaddress/XSPAAccessControl/XSPAPolicyEnforcementPointService
XSPAPolicyInformationPoint	http://ipaddress/XSPAAccessControl/XSPAPolicyInformationPointService
XSPAAttributeService	http://ipaddress/XSPAAccessControl/XSPAAttributeService

- IP Address for SAML testbed 204.115.177.219
- IP Address for WS-Trust testbed 204.115.177.201

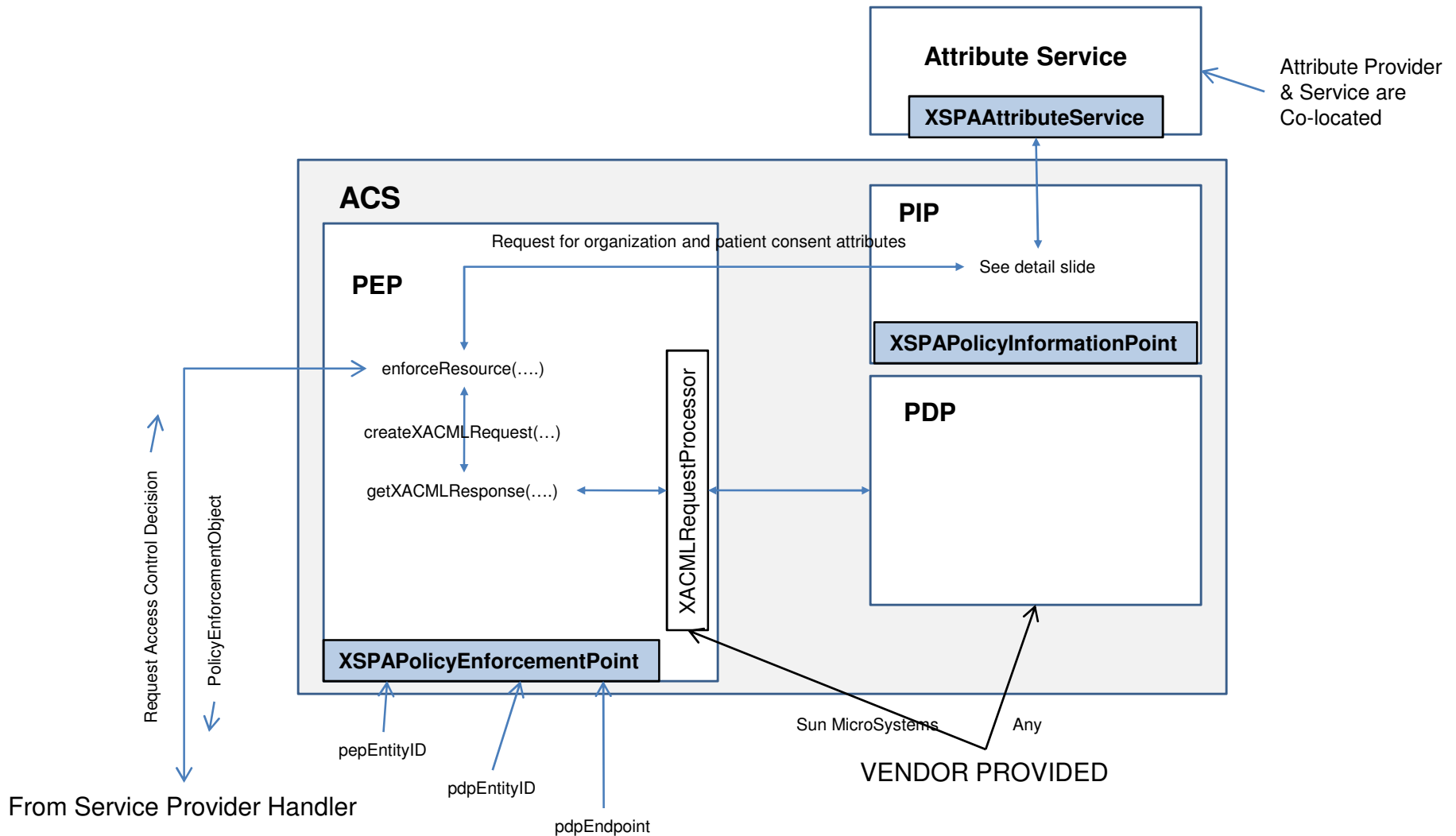


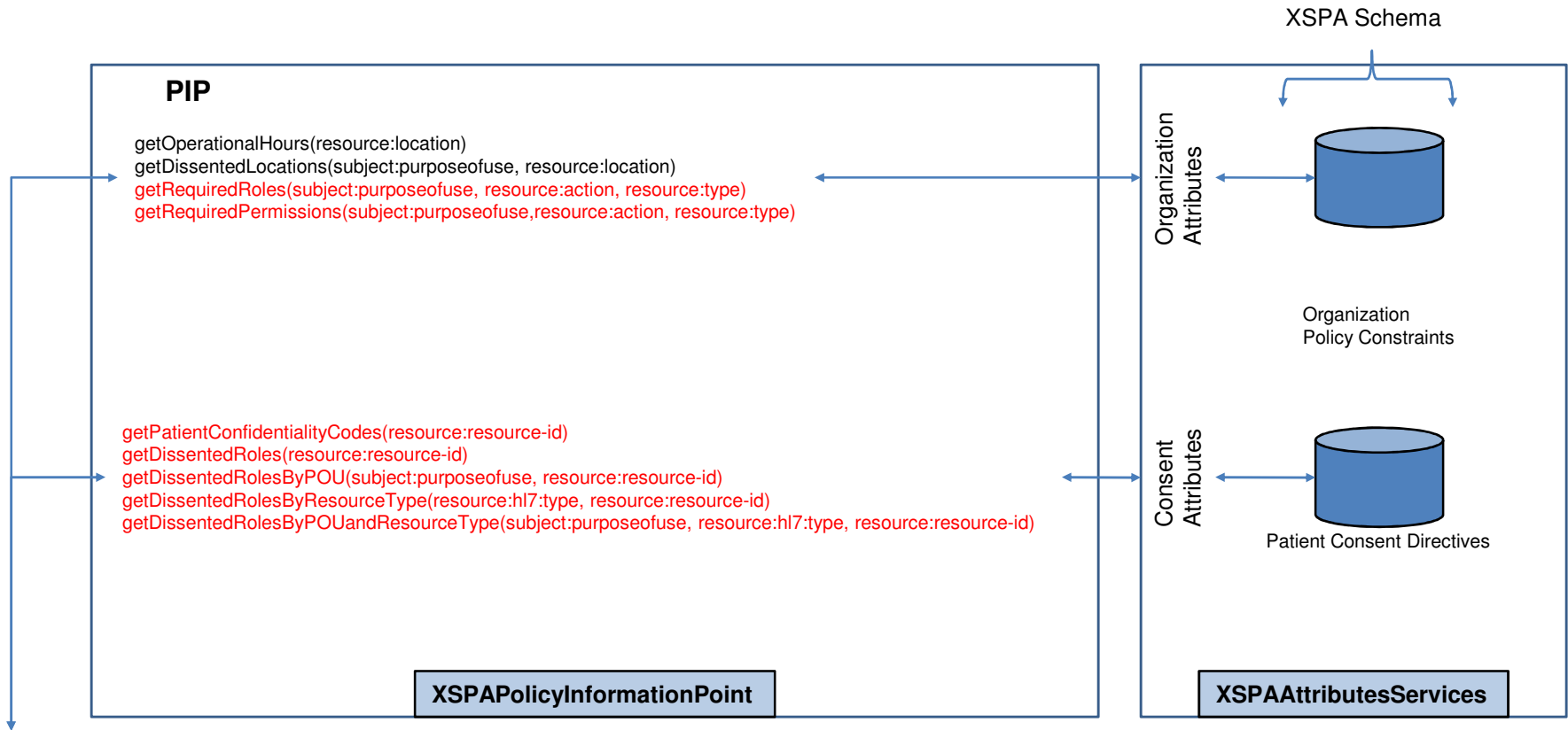
XSPA Services class can be found in the XSPAInterop project under HIMSS branch of SVN.

Service Provider Roadmap Common Patient Access – Using DoD Adapter



XSPA Services class can be found in the XSPAInterop project under HIMSS branch of SVN.





*web operations in red are required by HIMSS Interop use cases

From
Policy
Enforcement
Point
(PEP)

XSPAPolicyEnforcementPoint