

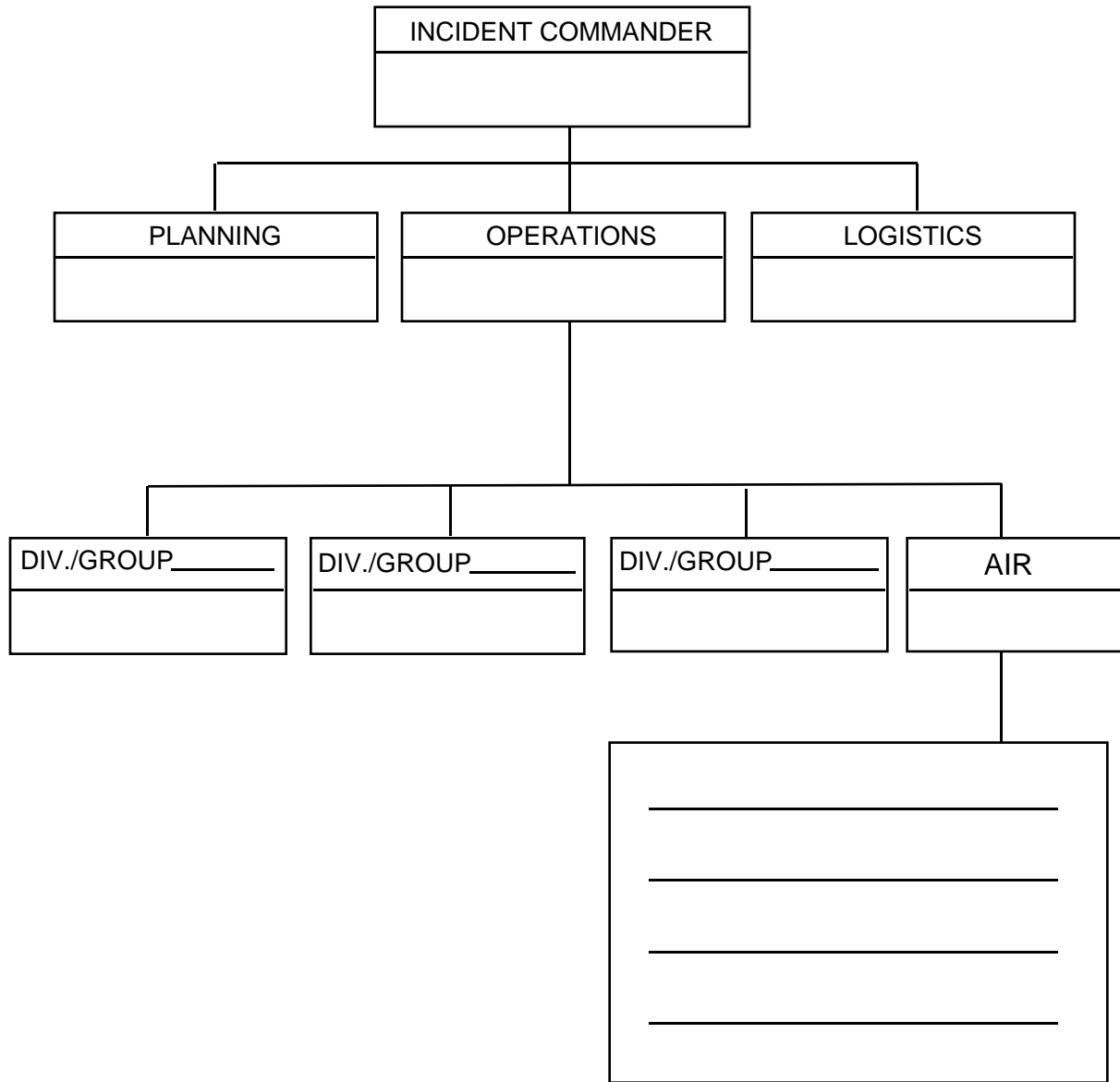
**INSTRUCTIONS FOR COMPLETING THE INCIDENT BRIEFING
(ICS FORM 201)**

Item Number	Item Title	Instructions
1.	Incident Name	Print the name assigned the incident.
2.	Date Prepared	Enter date prepared (month, day, year).
3.	Time Prepared	Enter time prepared (24-hour clock).
4.	Map Sketch	Show perimeter and control lines, resource assignments, incident facilities, and other special information on a sketch map or attached to the topographic or orthophoto map.
5.	Resources Summary	Enter the following information about the resources allocated to the incident:
	Resources Ordered	Enter the number and type of resource ordered.
	Resource Identification	Enter the agency three letter designator, S/T, Kind/Type, resource designator, and S/T letter designator code.
	ETA/On Scene	Enter the estimated arrival time and place the arrival time or a check mark in the "On Scene" column upon arrival.
	Location/Assignment	Enter the assigned location of the resource and/or the actual assignment.
6.	Current Organization	Enter on the organization chart the names of the individuals assigned to each position. Modify the chart as necessary.
7.	Summary of Current Objectives and Actions	Enter the strategy and tactics used on the incident and note any specific problem areas.
8.	Prepared By	Enter the name and position of the person completing the form.

INCIDENT BRIEFING	1. INCIDENT NAME CREST	2. DATE PREPARED 08-20-78	3. TIME PREPARED 1700
4. MAP SKETCH			
ICS 201 5/94	PAGE 1	8. PREPARED BY (NAME AND POSITION) Joe Pepper, Incident Commander	

7. SUMMARY OF CURRENT OBJECTIVES AND ACTIONS		
CURRENT OBJECTIVES:		
CURRENT ACTIONS: ACTIONS TO PRESENT (1700)		
DIV A: DOZER, HANDCREWS AND ENGINES ARE HOLDING LEFT FLANK FROM POINT		
OF TO PIPELINE WITH SUPPORT FROM FIXED-WING AIRCRAFT. PROGRESS IS SLOW.		
DOZER WILL REACH SLOPE LIMITATION AT APPROXIMATELY 1830. TOPOGRAPHY		
ABOVE THE PIPELINE STEEPENS AND DIRECT ATTACK WILL BE LIMITED TO		
HANDCREWS AND AIR TANKERS.		
DIV B.		
DOZER, HANDCREWS AND ENGINES ARE HOLDING RIGHT FLANK FROM POINT OF		
ORIGIN TO JUST ABOVE PIPELINE. DOZER HAS REACHED ITS LIMITATION AND HAS		
TURNED BACK, WIDENING AND IMPROVING LINE AS IT GOES. HELICOPTERS ARE		
SUPPORTING HANDCREWS WITH WATER DROPS. HELIBASE IS CURRENTLY		
LOCATED AT LOST LAKE, BDF ENGINE 373 IS ASSIGNED TO HELIBASE FOR DUST		
ABATEMENT AND TO FILL DROP TANKS. CDF STRIKE TEAM 9650 C IS ENROUTE UP		
CLEGHORN TRUCK TRAIL TO 1) HOLD TRUCK TRAIL WITH DIRECT ATTACK, IF		
POSSIBLE, OR 2) FIRE OUT ROAD. A STAGING AREA, INCIDENT BASE AND CP HAVE		
ALL BEEN ESTABLISHED FOR THE TIME BEING AT CAJON CAMPGROUND. WEATHER		
TAKEN AT 1330 FROM MORMON ROCKS STATION. (APPROXIMATELY 4 MILES FROM		
FIRE) INDICATED: TEMP: 90° WIND: SW AT 20 FUEL MOISTURE: 3.0		
ICS 201 5/94	PAGE 2	

6. CURRENT ORGANIZATION



5. RESOURCES SUMMARY				
RESOURCES ORDERED	RESOURCE IDENTIFICATION	ETA	ON SCENE	LOCATION/ASSIGNMENT
Initial Attack	BDF 307		—	CP - Incident Cmdr
	BDF 309		—	CP - Planning Sec. Chief
	BDF 395		—	DIV A Supervisor
	BDF 397		—	DIV B Supervisor
	BDF 333		—	DIV A Hose Lay
	BDF 323		—	DIV A Hose Lay
	BDU 6562		—	DIV A Hose Lay
	BDU 6585		—	DIV A Hose Lay
	BDU 6540		—	DIV A Line Construction
	BDU A-1 19		—	DIV A Air Drops
	RO6 A-3 72		—	DIV B Air Drops
	BDU C-1 PR 2		—	DIV B Line Construction
	BDU C-1 PR 3		—	DIV B Line Construction
	BDU C-1 PR 1		—	DIV B Line Construction
	BDU 6546		—	DIV B Line Construction
Engine S/T	TYPE C	1730		DIV A
Engine S/T	TYPE D	1730		DIV B
2 type 1 Helicopters				
4 Water Tenders		1800		
	BDF E-3 373		—	Lost Lake Helibase
	CDF 9650 C		—	Cleghorn Truck Trail
ICS 201 5/94	PAGE 4			