

Contents

How to print envelopes..... 3
IBM Joins OpenOffice..... 4

Editorial

Hello and welcome to this the first edition of the OpenOffice magazine. Our magazine will be a mix of tutorials news and articles about OpenOffice and the companies associated with OpenOffice.

Being a community magazine it will need a lot of input from you the community to guarantee it's success. We want you to write the tutorials and articles after all it's a community led magazine.

The community must decide what it wants to see in the magazine and you can do this by sending in news items articles tutorials that you want included.

The new version of OpenOffice has just been released version 2.3. So go and get a copy if don't already have one. A sector that the magazine will focus on in future issues is the ways in which you can use the new extensions in OpenOffice. If you didn't already know you can get extensions just like you can for Firefox. (<http://extensions.services.openoffice.org/>)

Editing & Layout

David Butt

Writers

OpenOffice Community magazine is Published as a community project for the OpenOffice community. We encourage submmisions from the community . Please submit your articles, news items and Ideas to: daibutt@ntlworld.com

OpenOffice magazine is published under:
Creative Commons
Attribution-Noncommercial-Share Alike 3.0 license
<http://creativecommons.org/licenses/by-nc-sa/3.0/>

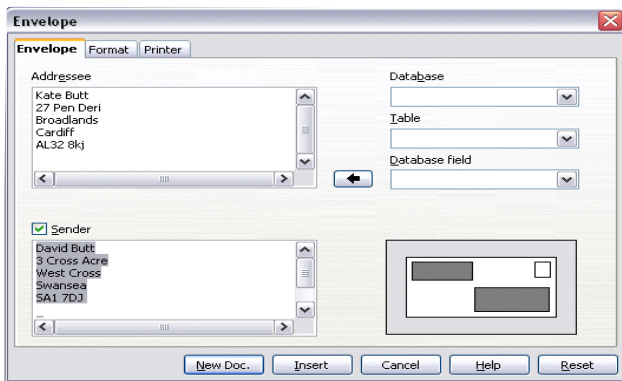
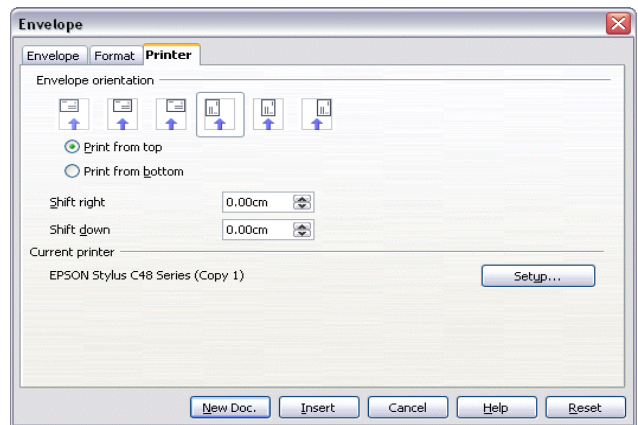
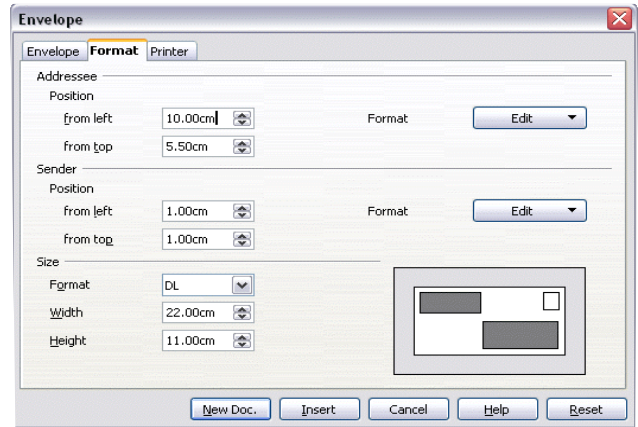
OpenOffice Writer

How to address envelopes using the wizard in Writer

By David Butt

When it comes to writing letters there are plenty of tutorials and templates that you can read or use but, when it comes to printing your envelopes to make your letters look and feel even more professional there seems to be a lack of good sound advice on how to go about this in Writer. So for this tutorial we shall show you how to print addresses on your envelopes using the wizard in Writer.

1. Choose Insert -> Envelope
2. In the dialogue box that pops up choose the first tab (Envelope) and type in your address in the Sender box make it is checked if you want to print your address on the envelope. In the addressee box put the address to whom you are sending the letter to. fig2
3. On the format tab you can position the address on your envelope using Addresseee



and sender from left from top positioning buttons. In the size part of the dialogue box choose the size of you envelope from the format drop down list box (I'm using DL) the width and height boxes will conform to the size you have chosen. fig3

4. Next click on the printer tab. A word of warning when it comes to choosing the way to print your envelopes your printer may only work with one or two of the six options. My printer (EpsonC48 only works properly using the last three options). You may have to have a few trial runs to see which settings work. fig4

5. Load an envelope into your printer and select file->print or click on the print icon. Depending on which way your printer likes to print envelopes this may take a few tries until you find the right settings in step four. You should end up with an envelope that looks like fig5 without the outline boxes around the addresses. Fig5



IBM JOINS OPENOFFICE

IBM joins the OpenOffice.org community to develop and promote OpenOffice.org

10 September 2007 -- The OpenOffice.org community today announced that IBM will be joining the community to collaborate on the development of OpenOffice.org software. IBM will be making initial code contributions that it has been developing as part of its Lotus Notes product, including accessibility enhancements, and will be making ongoing contributions to the feature richness and code quality of OpenOffice.org. Besides working with the community on the free productivity suite's software, IBM will also leverage OpenOffice.org technology in its products.

"In the seven years since Sun founded the project, OpenOffice.org has fueled and filled the need for document data and productivity tools that are open and free. Open source software and ODF are having a profound impact around the world, with numerous communities and organizations coming together to support these initiatives and governments, and corporations and schools standardizing on the software. We look forward to working with IBM and the other members of OpenOffice.org to ensure that this momentum continues. We invite others to join us in the community and participate in building the future as OpenOffice.org and ODF continue to gain popularity across the planet," said Rich Green, Executive Vice President, Software at Sun Microsystems, Inc.

"IBM is very pleased to be joining the OpenOffice.org community. We are very optimistic that IBM's contribution of technology and engineering resources will provide tangible benefits to the community membership and to users of OpenOffice.org technology around the world," said Mike Rhodin, General Manager of IBM's Lotus division. "We're particularly pleased to be teaming with the community to accelerate the rate of innovation in the office productivity marketplace. We believe that this relationship will improve our ability to deliver innovative value to users of IBM products and services. We also believe that the collaboration will lead to an even broader range of ODF-supporting applications (ISO 26300) and solutions that draw from the OpenOffice.org technology."

"This is great news for the tens of millions of users of OpenOffice.org and the thousands of

individual members of the project", said John McCreesh, OpenOffice.org Marketing Project Lead. "We welcome IBM's contributions to further enhancing the OpenOffice.org product. But equally important is IBM's future commitment to package and distribute new works that leverage OpenOffice.org technology supporting the ISO ODF standard. ODF is a once in a generation opportunity for the IT industry to unify round a standard, and deliver lasting benefit to users of desktop technology."

Others involved in the project or distributing the code were equally enthusiastic about IBM's step.

Mark Shuttleworth, founder of Ubuntu, the Linux distribution, said, "We are excited about IBM joining Sun and other contributors to the OpenOffice.org community in pushing development of OpenOffice.org and the OpenDocument Format. We are firmly committed to help set, drive and promote open standards like the ODF world-wide to free all users from any dependency on single vendors and proprietary software. The OpenOffice.org community is showing that it is possible for large, competing companies to collaborate and deliver extraordinary value to all of their users." OpenOffice.org is distributed with Ubuntu.

And Hu Caiyong, CEO of Beijing's Redflag Chinese 2000 Software Co., Ltd., whose company contributes significant resources to OpenOffice.org, stated, "We acclaim IBM as a welcome contributor to the OpenOffice.org community! It's great to have such a strong partner on our side, one which, with its extraordinary technical expertise and marketing power, will help drive this project so important to free software and open standards. We are looking forward to a truly productive partnership and harmonious collaboration with IBM, Sun and other contributors on OpenOffice.org."

Scott Crenshaw, Red Hat's Vice President of Enterprise Linux, agreed: "IBM continues to show their commitment to the proliferation of open-source software and we applaud them on joining the OpenOffice.org community. We look forward to continuing our strong relationship with IBM as we work toward a common goal of bringing value to our customers and fostering the adoption of open standards and ODF."

OpenOffice.org® is the leading open-source productivity suite. It includes word processing, spreadsheet, presentation, drawing, database, and other modules; it uses the ODF as its native file format as well as fully supporting other common file formats (including Microsoft Office). The software runs on all major platforms, including Windows, Vista, Linux, Solaris, Mac OS X, and is available in over 100 languages.

OpenOffice.org is fully interoperable with other popular suites and may be used free of charge for any purpose, private or commercial; the license is LGPL.

Since the project's creation by Sun Microsystems in 2000, nearly 100 million have downloaded the product; thousands contribute to it. As an international team of volunteer and sponsored contributors, the OpenOffice.org community has created what is widely regarded as the most important open-source project in the world today. The OpenOffice.org community acknowledges generous sponsorship from a number of companies, including Sun Microsystems, the founder and primary contributor.

Press Contacts

Louis Suarez-Potts (GMT -04h00)
OpenOffice.org Community Manager
Chair, Community Council
Louis.Suarez-Potts@Sun.COM
+1 (416) 625 3843 (mobile)
+1 (416) 531-9513 (landline)

John McCreesh (GMT +01h00)
OpenOffice.org Marketing Project Lead
Member, Community Council
jpmcc@openoffice.org
+44 (0)7 810 278 540
Michael Azzi

IBM Corp.
01-1-914-766-1561
azzi@us.ibm.com
Terri Molini
Sun Microsystems, Inc.
+1 (408) 404 4976
terri.molini@sun.com

Take Test Drive Keep Car

Did you know that 'Microsoft today announced the opening of a "test drive" so that people can see what Microsoft Office 2007 might look like when it finally goes on sale'?

I didn't know that. I have learned from Press Release - for immediate release, OpenOffice.org challenges Microsoft's Office "Test Drive" post by John McCreesh, OpenOffice.org Marketing Project Lead.

<http://www.openoffice.org/servlets/ReadMsg?list=announce&msgNo=291>

It goes, "The OpenOffice.org Community invites potential upgraders to go one better - download the full OpenOffice.org 2 office suite today for a test drive, and if you like it, use it free for as long as you like. It's the ultimate no-strings-attached test drive - if you enjoy the test drive, keep the car!"

OpenOffice.org, I enjoy 2.0.3 RC7 QA testing now and I will keep it for a while.

It continues, "As office software becomes a commodity product, Microsoft has been forced to make significant changes to the 'look and feel' of MS-Office 2007. Because of this, analysts now agree that migrating to Microsoft Office 2007 will be a major upheaval with a significant cost impact."

OpenOffice.org, Upgrading 2.0.3 to 2.0.4 is easy and costs nothing.

Then it says, "Unlike changing to Microsoft Office 2007, changing to OpenOffice.org 2 does not require learning how to use office software all over again. Indeed, reports have shown migration to OpenOffice.org 2 is 90% cheaper than migrating to Microsoft Office 2007."

Then I know what you choose.

For more information and references to the reports, please see <http://why.openoffice.org> and you'll know what you do, "Take a Test Drive - Keep the Car!"