

## 2.14 International Freight Management

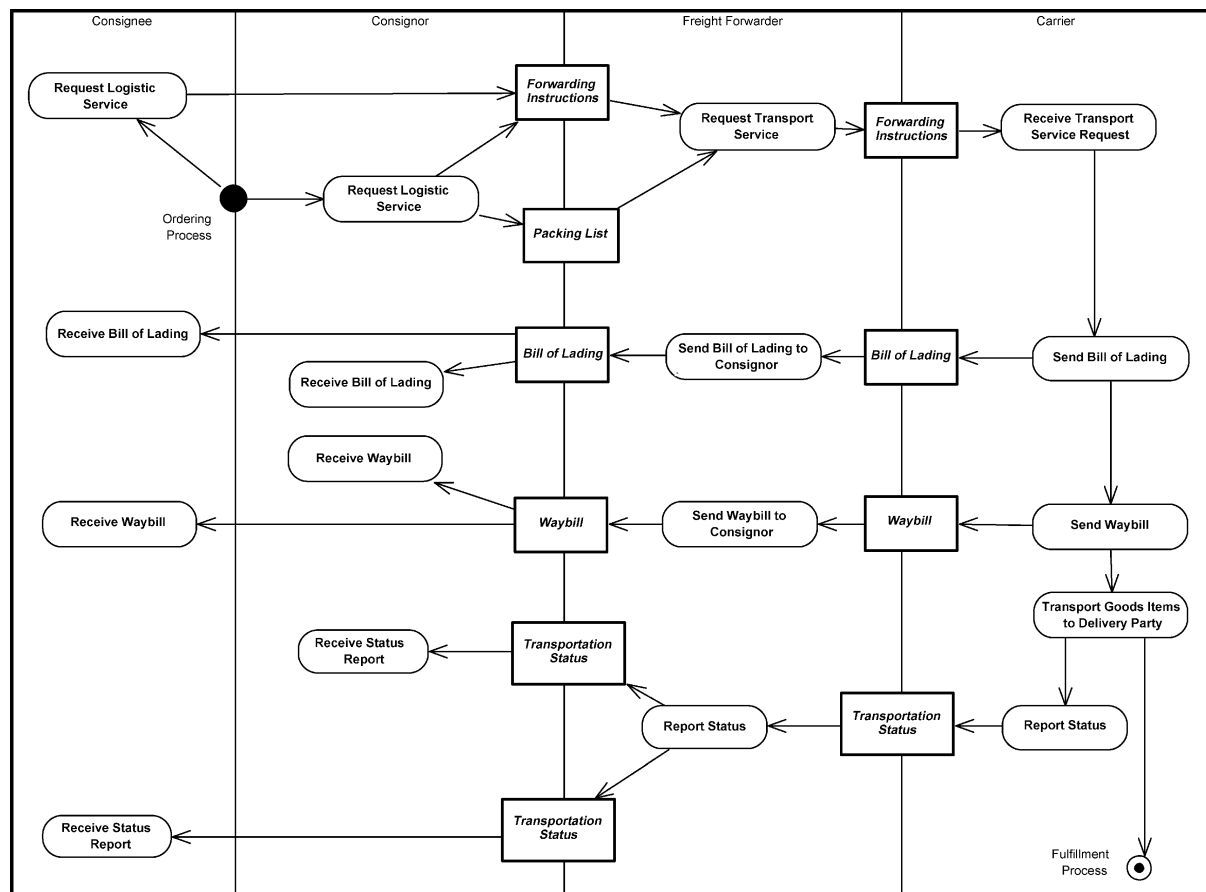
Freight management for domestic trade is typically accomplished using [Despatch Advice](#) and [Receipt Advice](#) (see [Section 2.7, "Fulfillment"](#)). The additional processes shown in [Figure 55, "Initiate Freight Management Process"](#) are engineered to support the ordering and management of logistical services for international trade.

With receipt of an order and acknowledgement by the Supplier Party that the goods are available and ready to be shipped, the Consignor or Consignee initiates the transportation arrangements. This includes booking the consignment with a Transport Service Provider such as the Freight Forwarder or Carrier and advising the Delivery Party of the arrangements as needed.

Document types in these processes are [Forwarding Instructions](#), [Packing List](#), [Bill of Lading](#), and [Waybill](#). (Regarding the [Transportation Status](#) document type, see [Section 2.15, "Freight Status Reporting"](#)).

It should be noted that these processes involve the Consignee and Consignor and do not cover all the logistical processes required to physically move the goods or regulatory notifications such as Customs declarations.

Figure 55. Initiate Freight Management Process



### 2.14.1 Forwarding Instructions

[Forwarding Instructions](#) are normally used by any party who gives instructions for the transportation services required for a consignment of goods (the Transport Service Buyer) to any party who is contracted to provide the transportation services (called the Transport Service Provider). Forwarding Instructions may also be used by any party who requests a booking of shipment space to be made for the transportation services required for a consignment of goods to any party who will provide the underlying transportation services. The parties who issue this document are commonly referred to as the shipper, con-


signee, or consignor, while the parties who receive this document are forwarders, carriers, shipping agents, etc.

Forwarding Instructions may also be issued by a freight forwarder or shipping agent in their capacity as a Transport Service Buyer. This document may be used to arrange for the transportation:




- Of different types of goods or cargoes
- Whether containerized or non-containerized
- Through different modes of transport, and
- From any origin to any destination.


## 2.14.2 Packing List



A [Packing List](#) is normally issued by the Consignor. It states the distribution of goods in individual packages.



 Based on this detail, the party who provides the logistic services will make arrangement for the transportation of the goods.

## 2.14.3 Bill of Lading


 A [Bill of Lading](#)  is issued by the party who provides the physical transportation service  (e.g., carrier) to the party who gives instructions for the transportation services (shipper, consignor, etc.) stating the details of the transportation, charges, and terms and conditions under which the transportation service is provided.

A Bill of Lading may also be issued by the party who acts as an agent for the carrier or other agents to the party who gives instructions for the transportation services (shipper, consignor, etc.) stating the details of the transportation, charges, and terms and conditions under which  transportation service is provided, but who does not provide the physical transportation service.

 A Bill of Lading corresponds to the information on the [Forwarding Instructions](#). It is used for ocean or  modes of transport.

 A Bill of Lading may serve as a contractual document between the parties for the transportation service.  document evidences a contract of carriage by sea and the acceptance of responsibility for the goods by the carrier, by which the carrier undertakes to deliver the goods against surrender of the document. A provision in the document that the goods are to be delivered to the order of a named person, or to order, or to bearer, constitutes such an undertaking.

## 2.14.4 Waybill

 A [Waybill](#) is issued by the party who provides the physical transportation services to the party who gives instructions for the transportation services (shipper, consignor, etc.). It states the details of the transportation, charges, and terms and conditions under which the transportation service is provided.

Unlike a [Bill of Lading](#), a Waybill is not negotiable and cannot be assigned to a third party. It is issued as a cargo receipt and is not required to be surrendered at the destination in order to pick up the cargo. This simplifies the documentation procedures between a Transport Service Buyer and a Transport Service Provider.

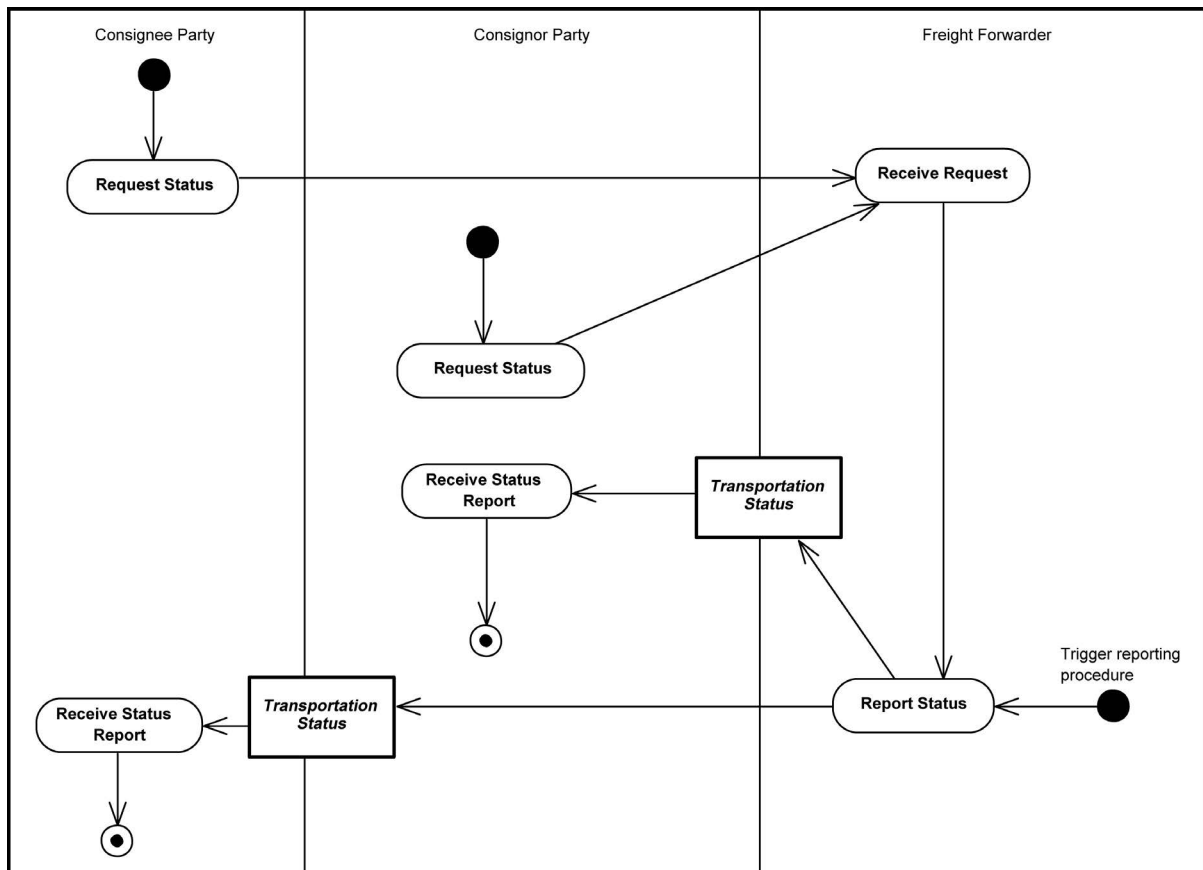


## 2.15 Freight Status Reporting

Freight Status Reporting is the process by which a Freight Forwarder (also known as the Transport Service Provider) communicates the status of shipments currently under their management to the Consignee and/or Consignor (also known as the Transport Users).

A [Transportation Status](#) document is provided by the Freight Forwarder, either through an individual specific request or through an agreed status reporting procedure.

Figure 56. Freight Status Reporting Process

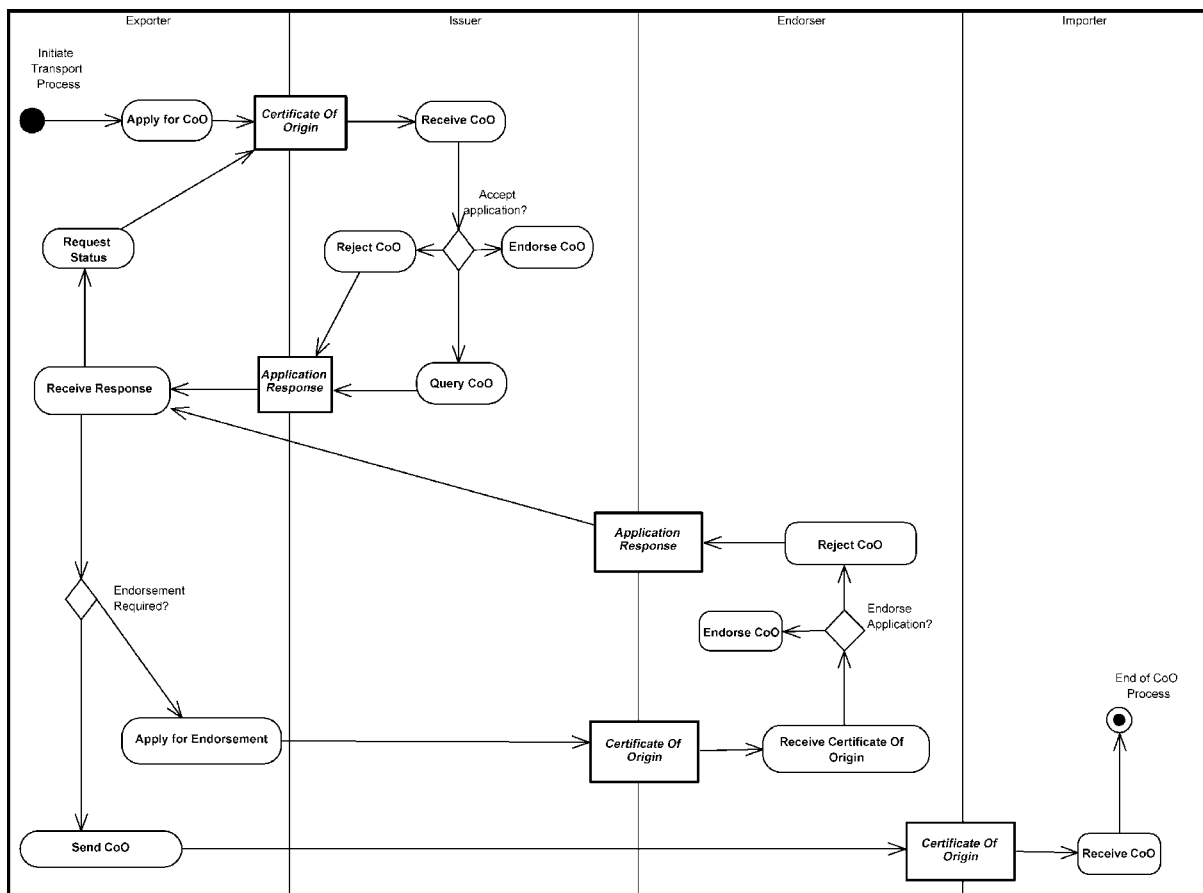


## 2.16 Certification of Origin of Goods

When an Exporter ships certain goods they may be required to attest to the origin of the goods. A **Certificate of Origin** is a document required by governments declaring that goods in a particular international shipment are of a certain origin.

It is the responsibility of the Exporter to sign the Certificate of Origin document and submit it to a local chamber of commerce or designated government agency or board. These parties are the endorser and issuer of the Certificate of Origin. The Endorser must have access to other documents, such as the commercial **Invoice** and **Bill of Lading**, in order to verify the Exporter's claims that the goods originated in that country. Finally, the issued Certificate of Origin is sent to the Importer.

Figure 57. Certification of Origin of Goods Process



## 2.17 Intermodal Freight Management

Intermodal transport implies the use of a combination of transport modes. Any support for the management of such chains has to support the modal shift of cargo flows from road to intermodal transport using road in combination with short sea shipping, inland waterways, and rail.

The Intermodal Freight Management process differs from conventional freight management in that it is generic and independent of transport mode. The focus is the multimodal transport chain as seen from the Transport User's point of view. The Transport User needs information about all the possible transport services that can be used to build a complete transport chain. If the choices to be made by the Transport User are based upon the qualities of the transport services themselves, and not by which transport mode is used, the description of the transport services, and the exchanges of information about the roles and services must be simple and common.

The roles of the various Parties are defined as follows:

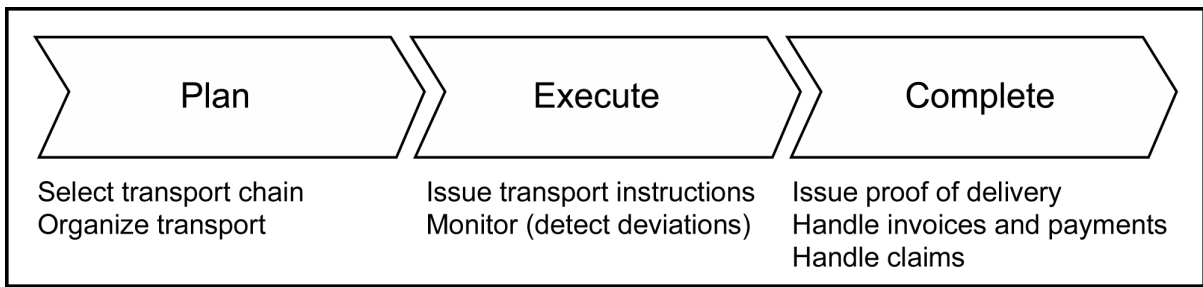
- The *Transport User* is the role representing anyone that needs to have cargo transported. The Transport User also provides the Transport Service Provider with instructions and detailed information about the transport items to be transported.
- The *Transport Service Provider* is the role that ensures the transport of the cargo from the origin to the destination. This includes the management of the transport services and the operation of the transport means and handling equipment. A Transport Service Provider may also provide administrative services required for moving the cargo, such as cargo inspection.
- The *Transportation Network Manager* is the role that extracts all information available regarding the infrastructure (static or dynamic) related to planning and executing transport and makes this information available to the Transport User and the Transport Service Provider.
- The *Transport Regulator* is the role that receives all mandatory reporting (and checks if reporting has been carried out) in order to ensure that all transport services are completed according to existing rules and regulations.

It should be noted that a person or organization may take on different roles. For example, a freight forwarder is, on the one hand, a Transport Service Provider when communicating with clients (Transport Users). On the other hand, the freight forwarder is a Transport User when acquiring services from sub-contractors to ensure that a transport service is carried out between an origin and a destination.

The Intermodal Freight Management process takes place in three stages:

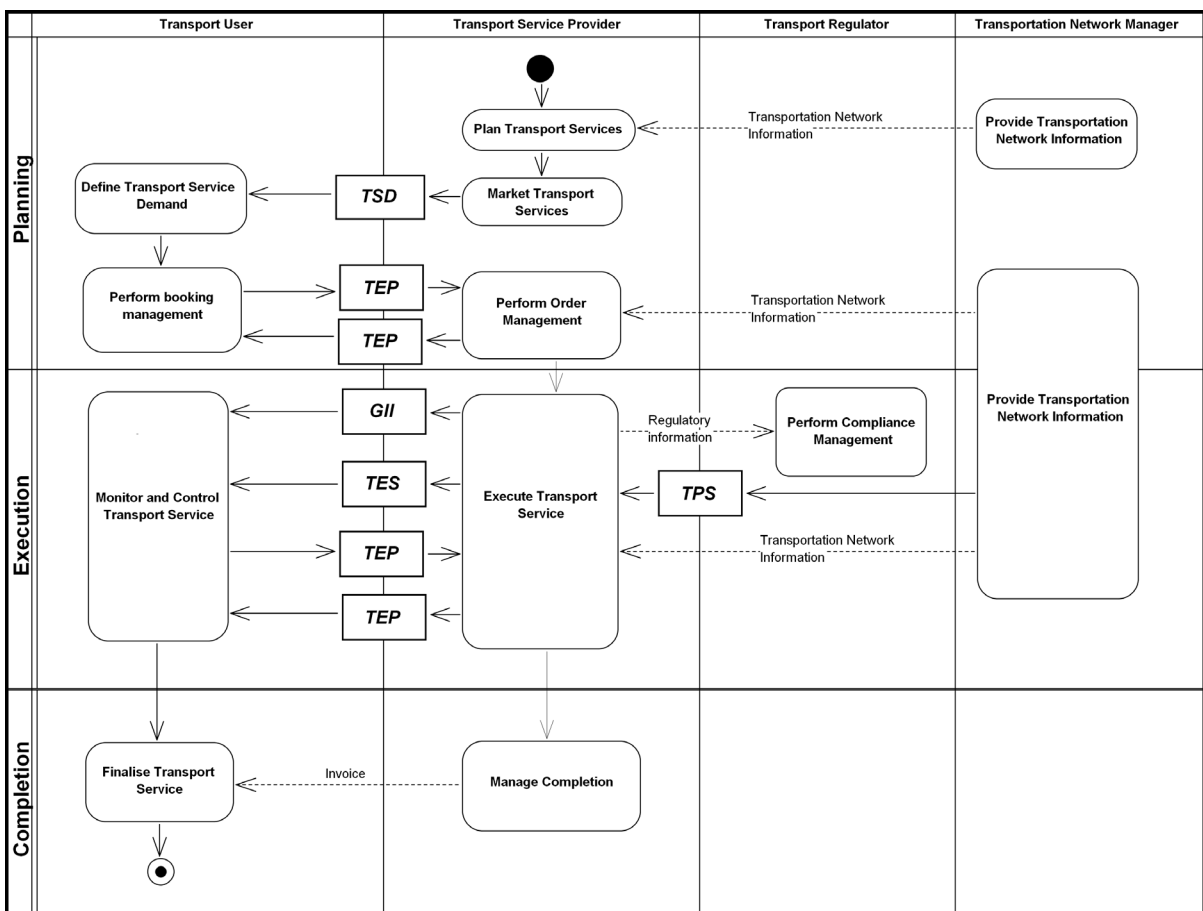
- *Planning*: Allows Transport Service Providers to advertise their services to Transport Users in a common format, in terms of a schedule and a freight rate published in a standard format. It allows Transport Users to provide a short list of potential services from which they can make a final choice by negotiating with potential Transport Service Providers. This is the "Plan" generic business process.
- *Execution*: Enables Transport Service Providers to manage the physical transport of the goods, exchanging information on the status of the shipment with the Transport Users and the status of the transport infrastructure with Transportation Network Managers; it also allows Transport Users and Transport Service Providers to exchange regulatory information with Transport Regulators (the "Execute" generic business process).
- *Completion*: Facilitates the issuing of proof of delivery and invoices between the Transport Service Provider and the Transport User (the "Complete" generic business process).

Figure 58. The Generic Freight Management Process



These three stages are detailed in the following diagram. (The abbreviations TSD, TEP, TES, TPS, and GII refer to the document types [Transport Service Description](#), [Transport Execution Plan](#), [Transport Execution Status](#), [Transport Progress Status](#), and [Goods Item Itinerary](#), respectively.)

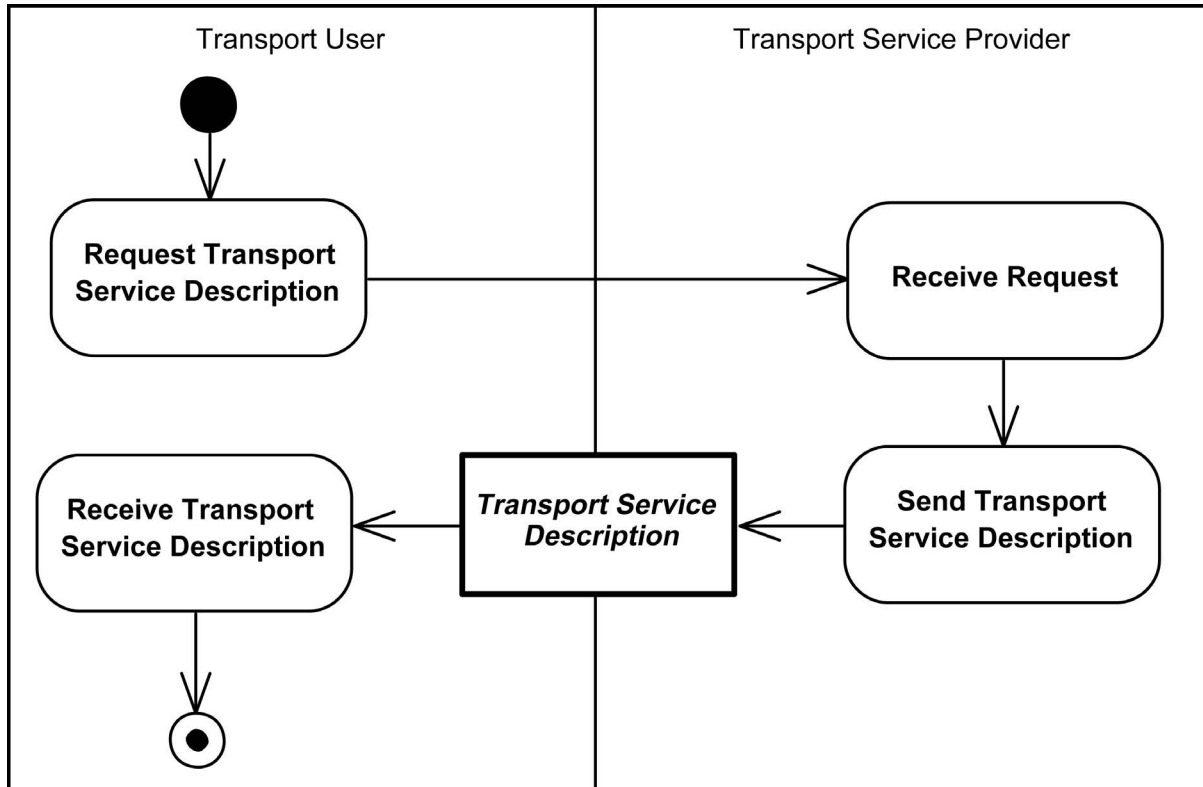
Figure 59. The Intermodal Freight Management Process



## 2.17.1 Transport Service Description

The [Transport Service Description](#) (TSD) document is used to publish information about a transport service. A transport service can be the physical transport of cargo between an origin and a destination, and it can also refer to other transport related services such as terminal services, warehousing services, handling services, or document handling services.

Figure 60. Transport Service Description

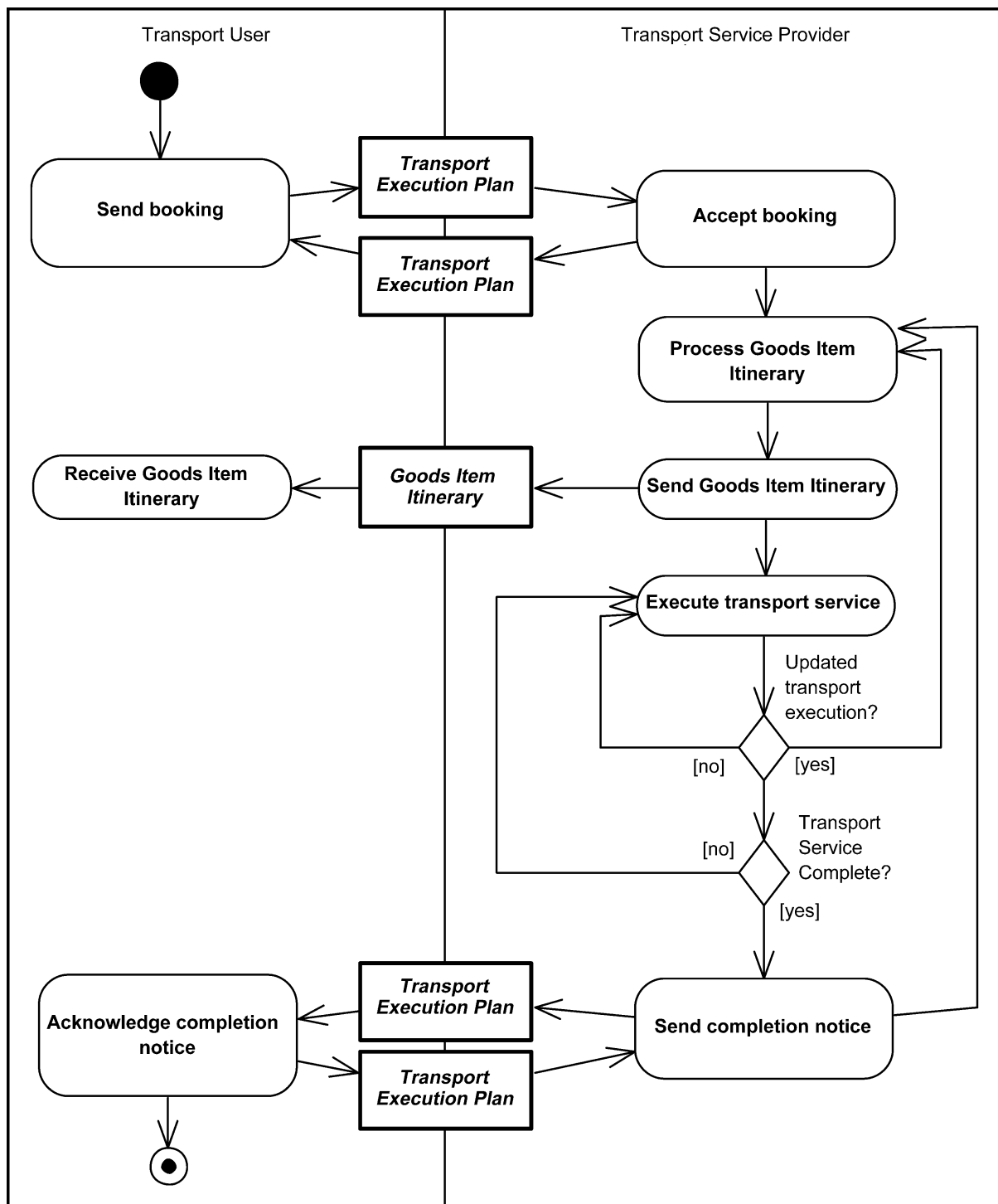


## 2.17.2 Transport Execution Plan

The [Transport Execution Plan](#) (TEP) is a plan established between a Transport User and a Transport Service Provider. The process of establishing a TEP can be carried out after many interactions between the two roles, from the quotation stage up to the final agreement of the TEP.

The following diagram shows the transactions involved in a basic scenario where the TEP is used to book and confirm a transport service and to send notification of a completed transport service. The GII (see [Section 2.17.3, "Goods Item Itinerary"](#)) is sent from the Transport Service Provider to the Transport User after the TEP is confirmed by both parties. This document contains route and schedule information for all segments involved in a transport service (including segments where parts of the transport service have been outsourced to other Transport Service Providers). If there are changes to the execution of the transport service, the GII is updated and re-sent to the Transport User.

Figure 61. Transport Execution Plan



### 2.17.3 Goods Item Itinerary

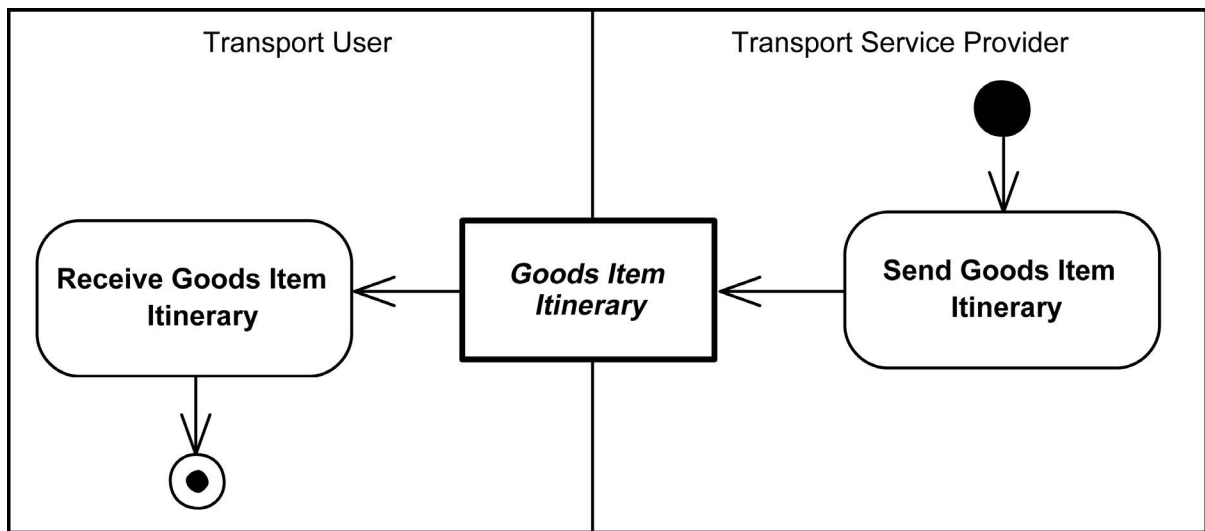
The [Goods Item Itinerary](#) (GII) specifies the route and time schedule for a transport item and is issued from the Transport Service Provider to the Transport User. It may contain one or more transport segments with different TEPs with different Transport Service Providers. One transport service (one TEP) may be responsible for more than one segment (leg).

In addition to providing an overview of the initial route and time schedule, the GII is used to record the actual progress in the form of new estimated times for departure and/or arrival and the actual departure



and arrival times. The GII therefore contains information that may be used for analyzing the performance (in time) of transport services and for tracing the progress of cargo, if such analysis is required.

Figure 62. Goods Item Itinerary

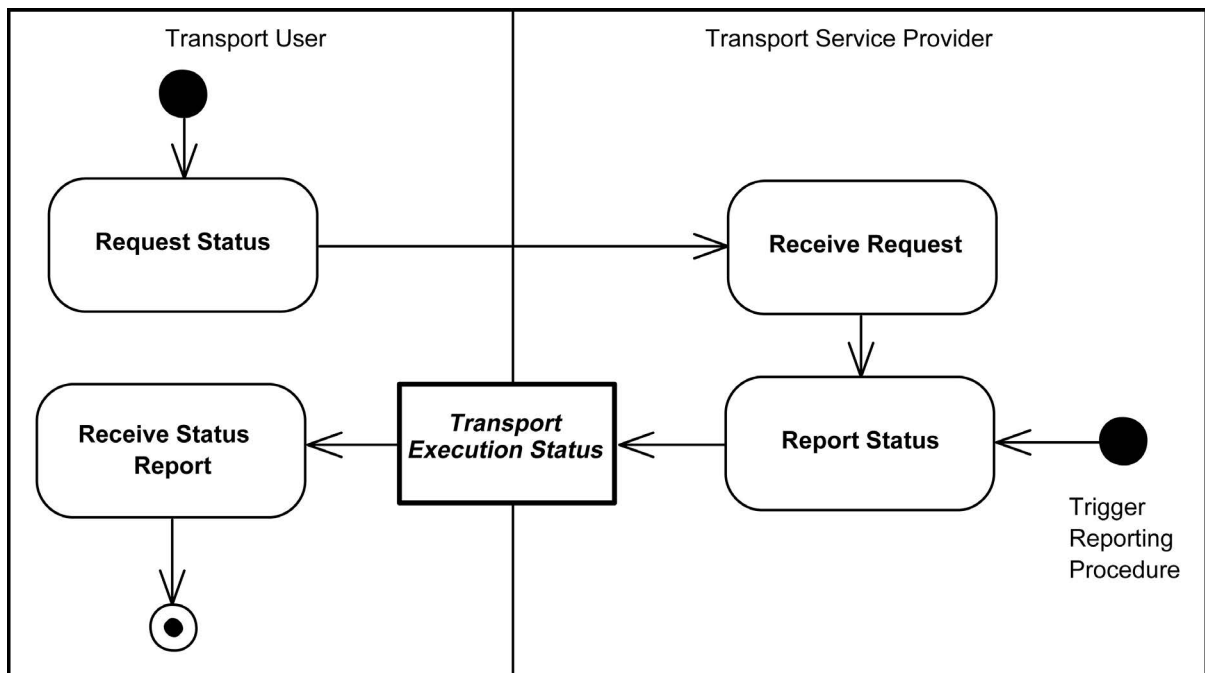


## 2.17.4 Transport Execution Status

The [Transport Execution Status](#) (TES) provides the status of the execution of a [Transport Execution Plan](#) (TEP). The TES must always refer to the TEP identifier and will return both the progress status of the transport execution and the condition status of the goods items being transported.

The TES may be sent from the Transport Service Provider as a response to a request, or it may be sent as a push operation based on trigger events.

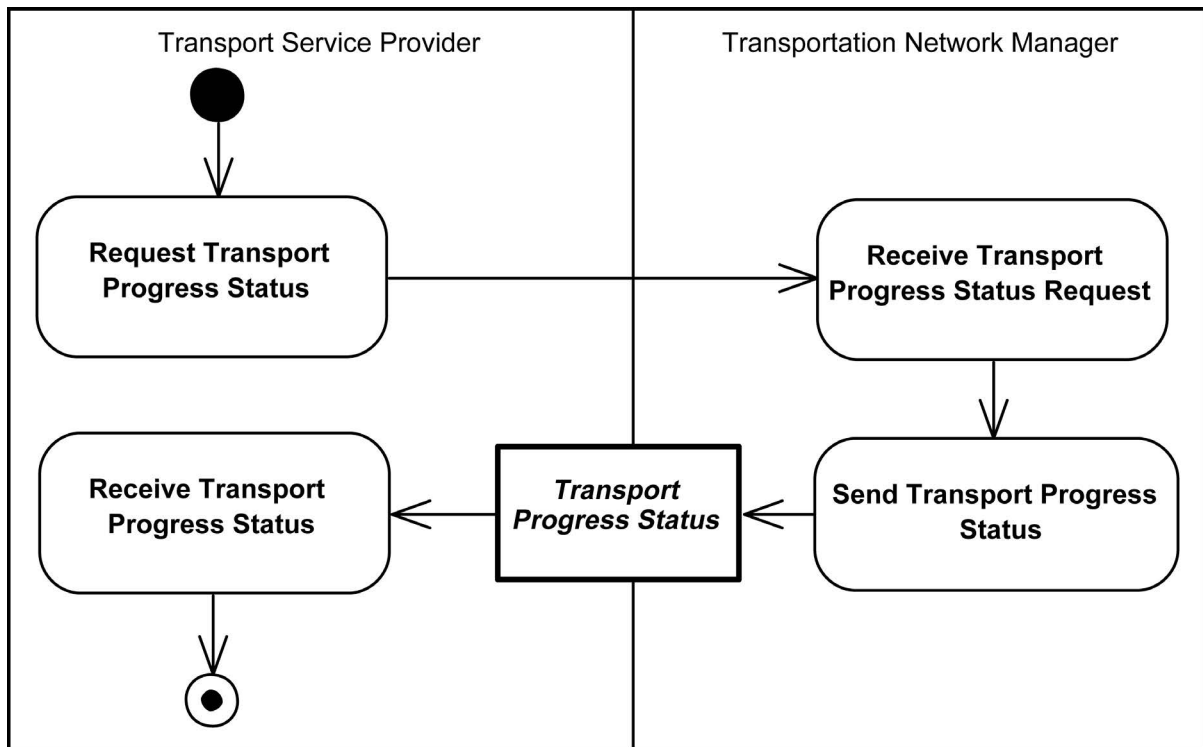
Figure 63. Transport Execution Status Process



## 2.17.5 Transport Progress Status

The [Transport Progress Status](#) (TPS) collects and reports information about the status of the transport means. The Transport Service Provider requests the Transportation Network Manager to provide status information related to a specific transport vehicle, using the vehicle identification number. The Transportation Network Manager then provides information about the location and time schedule status to the Transport Service Provider. The most typical use of TPS is to ask assistance from the Transportation Network Manager when estimated times of arrival are established. Reporting on the status of the goods themselves is covered by the [Transport Execution Status](#) process (Section 2.17.4, "Transport Execution Status") and Freight Status Reporting process (Section 2.15, "Freight Status Reporting").

Figure 64. Transport Progress Status Process



## 2.18 Party Roles

In the UBL supply chain processes, two main actors, Customer and Supplier, represent the key organizations or people involved in the processes. Each of these actors may play various roles. Some processes may also involve supplementary roles that may be provided by different parties.

The actual role undertaken is dependent on the context of use. For example, the Despatch Party and Delivery Party as applied to the Procurement process may differ in the Transportation process. In other words, whether the Consignor in a Transportation process is actually equal to the Despatch Party or Seller in the Procurement process depends on the specific circumstances.

The following table contains a description of the typical roles for the actor known as Party. Note that some roles require an extension of the information entities required. In UBL 2.1, the following are roles that extend the Party structure: Customer Party, Supplier Party, Contracting Party, Endorser Party, and Qualifying Party.

Table 1. Party Roles

Actor	Role	Description	Example	Synonyms	Sends	Receives
Customer Party	Originator	The party that had the original demand for the goods and/or services and therefore initiated the procurement transaction. The Originator participates in pre-ordering activity either through <a href="#">Request for Quotation</a> and <a href="#">Quotation</a> or by receiving a Quotation as a response to a punchout transaction on a marketplace or Seller's website. If the Originator subsequently places an <a href="#">Order</a> , the Originator adopts the role of Buyer. The Originator is typically the contact point for queries regarding the original requirement and may be referred to in an <a href="#">Order Change</a> , <a href="#">Order Cancellation</a> , or <a href="#">Order Response</a> .	If an employee requests a computer, the employing company may become the Buyer, but the employee is the Originator. They need to receive information about the order.		<a href="#">Request for Quotation</a>	<a href="#">Quotation</a>
Customer Party	Buyer	The party that purchases the goods or services on behalf of the Originator. The Buyer may be referred to in <a href="#">Order Response</a> , <a href="#">Despatch Advice</a> , <a href="#">Invoice</a> , <a href="#">Self Billed Invoice</a> , <a href="#">Credit Note</a> , and <a href="#">Statement</a> .	A company may delegate the task of purchasing to a specialized group to consolidate orders and gain greater discounts.	Order Point	<a href="#">Order</a> , <a href="#">Order Change</a> , and <a href="#">Order Cancellation</a>	<a href="#">Order Response</a>
Customer Party	Delivery	The party to whom goods should be delivered. The Delivery Party may be the same as the Originator. The Delivery Party must be referred to at line item level in <a href="#">Request for Quotation</a> , <a href="#">Quotation</a> , <a href="#">Order</a> , <a href="#">Order Change</a> , <a href="#">Order Cancellation</a> , and <a href="#">Order Response</a> . The Delivery Party may be referred to at line level in <a href="#">Invoice</a> , <a href="#">Self Billed Invoice</a> , <a href="#">Credit Note</a> , and <a href="#">Debit Note</a> . The Delivery Party may be stipulated in a transport contract.	If a municipality buys a wheelchair for a citizen, the wheelchair must be delivered to the citizen (the Delivery Party). In such cases the citizen may be notified before delivering the wheelchair.	Delivery Point, Destination Party, Receiver, Recipient	<a href="#">Receipt Advice</a>	<a href="#">Despatch Advice</a>
Customer Party	Accounting Customer	The party responsible for making settlement relating to a purchase and resolving billing issues using a <a href="#">Debit Note</a> . The Accounting Customer must be referred to in an <a href="#">Order</a> and may be referred to in an <a href="#">Order Response</a> . In a Self Billing scenario, the Accounting Customer is responsible for calculating and issuing tax invoices.	If a kindergarten buys some toys they may be the Originator, Buyer, and Delivery Party, but the municipality may play the role of Accounting Customer—they are going to pay for it.	<a href="#">Invoice</a> , <a href="#">Accounts Payable</a> , <a href="#">Debtor</a>	In a traditional Billing scenario: <a href="#">Debit Note</a> , <a href="#">Account Response</a> , and <a href="#">Remittance Advice</a> In a Self Billing scenario: <a href="#">Self Billed Invoice</a> , <a href="#">Self Billed Credit Note</a> , and <a href="#">Remittance Advice</a>	In a traditional Billing scenario: <a href="#">Invoice</a> , <a href="#">Credit Note</a> , and <a href="#">Statement</a> ; in a Self Billing scenario: <a href="#">Credit Note</a> , <a href="#">Account Response</a> , and <a href="#">Statement</a>

Actor	Role	Description	Example	Synonyms	Sends	Receives
Supplier Party	Seller	The party responsible for handling Originator and Buyer services. The Seller party is legally responsible for providing the goods to the Buyer. The Seller party receives and quotes against <a href="#">Requests for Quotation</a> and may provide information to the Buyer's requisitioning process through <a href="#">Catalogues</a> and <a href="#">Quotations</a> .	The organization that sells wheelchairs to municipalities.	Sales Point, Provider, Customer Manager	<a href="#">Quotation</a> , <a href="#">Order Response</a> , <a href="#">Order Response Simple</a> , <a href="#">Catalogue</a> , <a href="#">Catalogue Deletion</a> , <a href="#">Catalogue Item Specification Update</a> , <a href="#">Catalogue Pricing Update</a>	<a href="#">Request for Quotation</a> , <a href="#">Order</a> , <a href="#">Order Change</a> , <a href="#">Order Cancellation</a> , <a href="#">Request for Catalogue</a>
Supplier Party	Despatch	The party where goods are to be collected from. The Despatch Party may be stipulated in a transport contract.	The wheelchair Supplier may store chairs at a local warehouse. The warehouse will actually despatch the chair to the Delivery Party. The local warehouse is then the Despatch Party.	Despatch Point, Shipper, Sender	<a href="#">Despatch Advice</a>	<a href="#">Receipt Advice</a>
Supplier Party	Accounting Supplier	The party who claims the payment and is responsible for resolving billing issues and arranging settlement.	There are cases where the Accounting Supplier is not the Seller party. For example, factoring, where the invoicing is outsourced to another company.	Accounts Receivable, Invoice Issuer, Creditor	In a traditional Billing scenario: <a href="#">Invoice</a> , <a href="#">Credit Note</a> , and <a href="#">Statement</a> ; in a Self Billing scenario: <a href="#">Credit Note</a> , <a href="#">Account Response</a> , and <a href="#">Statement</a>	In a traditional Billing scenario: <a href="#">Debit Note</a> , <a href="#">Account Response</a> , and <a href="#">Remittance Advice</a> In a Self Billing scenario: <a href="#">Self Billed Invoice</a> , <a href="#">Self Billed Credit Note</a> , and <a href="#">Remittance Advice</a>
Supplier Party	Payee	The party to whom the <a href="#">Invoice</a> is paid.	The Accounting Supplier may not be the party to be paid due to changes in the organization, e.g., a company merger.	Accounts Receivable, Creditor		<a href="#">Remittance Advice</a>
Customer Party	Contractor	The party responsible for the contract to which the Catalogue relates.	An organization has a central office for maintaining catalogues of approved items for purchase.	Central Catalogue Party, Purchasing Manager	<a href="#">Request for Catalogue</a>	<a href="#">Catalogue</a> , <a href="#">Catalogue Deletion</a> , <a href="#">Catalogue Item Specification Update</a> , <a href="#">Catalogue Pricing Update</a>
Party	Provider	The party responsible for the integrity of the information provided about an item.	The manufacturer may publish and maintain the data sheets about a product.		<a href="#">Catalogue</a> , <a href="#">Catalogue Deletion</a> , <a href="#">Catalogue Item Specification Update</a> , <a href="#">Catalogue Pricing Update</a>	

Actor	Role	Description	Example	Synonyms	Sends	Receives
Party	Receiver	A general role, describing the receiver of a document. For a catalogue, this can be the customer or a third party exposing the document, for instance, an interim broker.	A marketplace may receive an <a href="#">Application Response</a> .			<a href="#">Catalogue</a> , <a href="#">Catalogue Deletion</a> , <a href="#">Catalogue Item Specification Update</a> , <a href="#">Catalogue Pricing Update</a> , <a href="#">Application Response</a>
Party	Sender	The party sending a document.	A marketplace may send an <a href="#">Application Response</a> .		<a href="#">Application Response</a>	
Party	Consignor	The party consigning the goods as stipulated in the transport contract. A Buyer, Delivery, Seller, or Despatcher Party may also play the role of Consignor. Also known as the Transport User. The Consignor may be stipulated in a transport contract.	The wheelchair Supplier may source from a local warehouse. The Freight Forwarder will collect the chair from the local warehouse, which is thus the Consignor. In this case, the warehouse also plays the role of Despatch Party to the Freight Forwarder.	Despatch Point, Shipper, Sender, Transport User	<a href="#">Forwarding Instructions</a> , <a href="#">Packing List</a>	<a href="#">Bill of Lading</a> , <a href="#">Waybill</a> , <a href="#">Freight Invoice</a> , <a href="#">Transportation Status</a>
Party	Consignee	The party receiving a consignment of goods as stipulated in the transport contract.	The party taking responsibility for the receipt of the consignment covering the wheelchair.	Delivery Point, Transport Service Buyer	<a href="#">Forwarding Instructions</a> , <a href="#">Freight Invoice</a>	<a href="#">Bill of Lading</a> , <a href="#">Waybill</a> , <a href="#">Freight Invoice</a> , <a href="#">Transportation Status</a>
Party	Freight Forwarder	The party arranging the carriage of goods, including connected services and/or associated formalities, on behalf of a Consignor or Consignee. Also known as the Transport Service Provider. The Freight Forwarder may also be the Carrier. The Freight Forwarder may create an <a href="#">Invoice</a> and bill to the Transport Service Buyer for the transportation service provided.	The Consignor may have a contract with this Freight Forwarder, which is a Transport Services Provider, to arrange all their transport needs.	Shipping Agent, Broker, Courier, Transport Service Provider	<a href="#">Forwarding Instructions</a> , <a href="#">Freight Invoice</a> , <a href="#">Transportation Status</a>	<a href="#">Bill of Lading</a> , <a href="#">Waybill</a> , <a href="#">Packing List</a>
Party	Carrier	The party providing physical transport services.	The Freight Forwarder may engage an airline company to deliver the wheelchair. The airline is then the Carrier and delivers the chair to the Delivery Party.	Freight Haulier, Shipper, Ships Agent, Shipping Company, Airline, Rail Operator, Road Haulier	<a href="#">Bill of Lading</a> , <a href="#">Waybill</a>	<a href="#">Forwarding Instructions</a>

Actor	Role	Description	Example	Synonyms	Sends	Receives
Party	Exporter	The party who makes regulatory export declarations, or on whose behalf regulatory export declarations are made, and who is the owner of the goods or has similar right of disposal over them at the time when the declaration is accepted.	The wheelchair Supplier has to apply for a <a href="#">Certificate of Origin</a> in order to sell the chairs overseas.	Seller, Consignor	<a href="#">Certificate of Origin</a>	<a href="#">Application Response</a>
Party	Endorser	The party appointed by the Government of a country who has the right to certify a <a href="#">Certificate of Origin</a> . This endorsement restricts goods imported from certain countries for political or other reasons.	The Government agency validates all the information provided by Exporter for <a href="#">Certificate of Origin</a> approval.	Authorized Organization, Embassy	<a href="#">Certificate of Origin</a> , <a href="#">Application Response</a>	<a href="#">Certificate of Origin</a>
Party	Importer	The party who makes, or on whose behalf an agent or other authorized person makes, an import declaration. This may include a person who has possession of the goods or to whom the goods are consigned.	A specialized group in a company consolidates the purchase request and handles the receiving of goods.	Order Point, Delivery Party, Buyer, Customer, Consignee		<a href="#">Certificate of Origin</a>

---

## 3 UBL 2.1 Schemas

The UBL 2.1 XSD schemas are the only normative representations of the UBL 2.1 document types and library components.

All of the UBL 2.1 XSD schemas are contained in the `xsd` subdirectory of the UBL 2.1 release package (see [Appendix A, Release Notes](#) for more information regarding the structure of the 2.1 release package and [Section 3.3, “Schema Dependencies”](#) for information regarding dependencies among the schema modules). The `xsd` directory is further subdivided into an `xsd/maindoc` subdirectory containing the schemas for individual 2.1 document types and an `xsd/common` subdirectory containing schemas in the UBL common library. For convenience in implementing the schemas, parallel (and technically non-normative) “runtime” sets with the annotation elements stripped out are provided in the `xsdrt` directory.

### 3.1 UBL 2.1 Document Schemas

The tables that follow describe each of the UBL 2.1 document types. Along with a link to the normative schema for each document type, each table provides links to the corresponding “runtime” schema, model spreadsheets (see [Appendix C, The UBL 2.1 Data Model](#)), summary report (see [Section C.5, “Summary Reports”](#)), RELAX NG schema (see [Section H.2, “UBL 2.1 RELAX NG Schemas”](#)), and example instance, if any (see [Appendix E, UBL 2.1 Example Document Instances](#)).

#### 3.1.1 Application Response

Description: A document to indicate the application’s response to a transaction. This may be a business response and/or a technical response, sent automatically by an application or initiated by a user.

Processes involved	Any
Submitter role	Sender
Receiver role	Receiver
Normative schema	<a href="#">xsd/maindoc/UBL-ApplicationResponse-2.1.xsd</a>
Runtime schema	<a href="#">xsdrt/maindoc/UBL-ApplicationResponse-2.1.xsd</a>
RELAX NG schema	<a href="#">rnc/versions/UBL-ApplicationResponse-2.1.rnc</a>
Document model (ODF)	<a href="#">mod/maindoc/UBL-ApplicationResponse-2.1.ods</a>
Document model (Excel)	<a href="#">mod/maindoc/UBL-ApplicationResponse-2.1.xls</a>
Summary report	<a href="#">mod/summary/reports/UBL-ApplicationResponse-2.1.html</a>

#### 3.1.2 Attached Document

Description: A UBL wrapper that allows a document of any kind to be packaged with the UBL document that references it.

Processes involved	Any
Submitter role	Sender
Receiver role	Receiver
Normative schema	<a href="#">xsd/maindoc/UBL-AttachedDocument-2.1.xsd</a>
Runtime schema	<a href="#">xsdrt/maindoc/UBL-AttachedDocument-2.1.xsd</a>
RELAX NG schema	<a href="#">rnc/versions/UBL-AttachedDocument-2.1.rnc</a>
Document model (ODF)	<a href="#">mod/maindoc/UBL-AttachedDocument-2.1.ods</a>
Document model (Excel)	<a href="#">mod/maindoc/UBL-AttachedDocument-2.1.xls</a>



Summary report	<a href="mod/summary/reports/UBL-AttachedDocument-2.1.html">mod/summary/reports/UBL-AttachedDocument-2.1.html</a>
----------------	---

### 3.1.3 Awarded Notification

Description: The document used to communicate the contract award to the winner

Processes involved	Tendering
Submitter role	Contracting Authority
Receiver role	Tenderer
Normative schema	<a href="xsd/maindoc/UBL-AwardedNotification-2.1.xsd">xsd/maindoc/UBL-AwardedNotification-2.1.xsd</a>
Runtime schema	<a href="xsdrt/maindoc/UBL-AwardedNotification-2.1.xsd">xsdrt/maindoc/UBL-AwardedNotification-2.1.xsd</a>
RELAX NG schema	<a href="rnc/versions/UBL-AwardedNotification-2.1.rnc">rnc/versions/UBL-AwardedNotification-2.1.rnc</a>
Document model (ODF)	<a href="mod/maindoc/UBL-AwardedNotification-2.1.ods">mod/maindoc/UBL-AwardedNotification-2.1.ods</a>
Document model (Excel)	<a href="mod/maindoc/UBL-AwardedNotification-2.1.xls">mod/maindoc/UBL-AwardedNotification-2.1.xls</a>
Summary report	<a href="mod/summary/reports/UBL-AwardedNotification-2.1.html">mod/summary/reports/UBL-AwardedNotification-2.1.html</a>

### 3.1.4 Bill of Lading

Description: The Bill of Lading is issued by the party who acts as an agent for the carrier or other agents to the party who gives instructions for the transportation services (shipper, consignor, etc.) stating the details of the transportation, charges, and terms and conditions under which the transportation service is provided. The party issuing this document does not necessarily provide the physical transportation service. It corresponds to the information on the Forwarding Instructions. It is used for any mode of transport. A Bill of Lading can serve as a contractual document between the parties for the transportation service. The document evidences a contract of carriage by sea and the acceptance of responsibility for the goods by the carrier, and by which the carrier undertakes to deliver the goods against surrender of the document. A provision in the document that the goods are to be delivered to the order of a named person, or to order, or to bearer, constitutes such an undertaking.

Processes involved	Freight Management
Submitter role	Freight Forwarder, Carrier
Receiver role	Consignor (or Consignee), Freight Forwarder
Normative schema	<a href="xsd/maindoc/UBL-BillOfLading-2.1.xsd">xsd/maindoc/UBL-BillOfLading-2.1.xsd</a>
Runtime schema	<a href="xsdrt/maindoc/UBL-BillOfLading-2.1.xsd">xsdrt/maindoc/UBL-BillOfLading-2.1.xsd</a>
RELAX NG schema	<a href="rnc/versions/UBL-BillOfLading-2.1.rnc">rnc/versions/UBL-BillOfLading-2.1.rnc</a>
Document model (ODF)	<a href="mod/maindoc/UBL-BillOfLading-2.1.ods">mod/maindoc/UBL-BillOfLading-2.1.ods</a>
Document model (Excel)	<a href="mod/maindoc/UBL-BillOfLading-2.1.xls">mod/maindoc/UBL-BillOfLading-2.1.xls</a>
Summary report	<a href="mod/summary/reports/UBL-BillOfLading-2.1.html">mod/summary/reports/UBL-BillOfLading-2.1.html</a>

### 3.1.5 Call for Tenders

Description: The document used for a Contracting Party to define the procurement project to buy goods, services or works during an specified period.

Processes involved	Tendering
Submitter role	Contracting Authority
Receiver role	Tenderer
Normative schema	<a href="xsd/maindoc/UBL-CallForTenders-2.1.xsd">xsd/maindoc/UBL-CallForTenders-2.1.xsd</a>

Runtime schema	<a href="#">xsdrt/maindoc/UBL-CallForTenders-2.1.xsd</a>
RELAX NG schema	<a href="#">rnc/versions/UBL-CallForTenders-2.1.rnc</a>
Document model (ODF)	<a href="#">mod/maindoc/UBL-CallForTenders-2.1.ods</a>
Document model (Excel)	<a href="#">mod/maindoc/UBL-CallForTenders-2.1.xls</a>
Summary report	<a href="#">mod/summary/reports/UBL-CallForTenders-2.1.html</a>

### 3.1.6 Catalogue

Description: The document that describes items, prices, and price validity.

Processes involved	Catalogue, Create Catalogue, Delete Catalogue, Update Catalogue Item Specification, Update Catalogue Pricing; Initial Stocking of the Area by Producer, Permanent Replenishment, Price Adjustments, Transfer of Base Item Catalogue, Changes to the Item Catalogue, Changes to the Article Catalogue
Submitter role	Seller
Receiver role	Contracting Party
Normative schema	<a href="#">xsd/maindoc/UBL-Catalogue-2.1.xsd</a>
Runtime schema	<a href="#">xsdrt/maindoc/UBL-Catalogue-2.1.xsd</a>
RELAX NG schema	<a href="#">rnc/versions/UBL-Catalogue-2.1.rnc</a>
Document model (ODF)	<a href="#">mod/maindoc/UBL-Catalogue-2.1.ods</a>
Document model (Excel)	<a href="#">mod/maindoc/UBL-Catalogue-2.1.xls</a>
Summary report	<a href="#">mod/summary/reports/UBL-Catalogue-2.1.html</a>

### 3.1.7 Catalogue Deletion

Description: The document used to cancel an entire [Catalogue](#).

Processes involved	Catalogue
Submitter role	Seller
Receiver role	Contracting Party
Normative schema	<a href="#">xsd/maindoc/UBL-CatalogueDeletion-2.1.xsd</a>
Runtime schema	<a href="#">xsdrt/maindoc/UBL-CatalogueDeletion-2.1.xsd</a>
RELAX NG schema	<a href="#">rnc/versions/UBL-CatalogueDeletion-2.1.rnc</a>
Document model (ODF)	<a href="#">mod/maindoc/UBL-CatalogueDeletion-2.1.ods</a>
Document model (Excel)	<a href="#">mod/maindoc/UBL-CatalogueDeletion-2.1.xls</a>
Summary report	<a href="#">mod/summary/reports/UBL-CatalogueDeletion-2.1.html</a>

### 3.1.8 Catalogue Item Specification Update

Description: The document used to update information about Items (e.g., technical descriptions and properties) on an existing [Catalogue](#).

Processes involved	Catalogue
Submitter role	Seller
Receiver role	Contracting Party
Normative schema	<a href="#">xsd/maindoc/UBL-CatalogueItemSpecificationUpdate-2.1.xsd</a>

Runtime schema	<a href="#">xsdrt/maindoc/UBL-CatalogueItemSpecificationUpdate-2.1.xsd</a>
RELAX NG schema	<a href="#">rnc/versions/UBL-CatalogueItemSpecificationUpdate-2.1.rnc</a>
Document model (ODF)	<a href="#">mod/maindoc/UBL-CatalogueItemSpecificationUpdate-2.1.ods</a>
Document model (Excel)	<a href="#">mod/maindoc/UBL-CatalogueItemSpecificationUpdate-2.1.xls</a>
Summary report	<a href="#">mod/summary/reports/UBL-CatalogueItemSpecificationUpdate-2.1.html</a>

### 3.1.9 Catalogue Pricing Update

Description: The document used to update information about prices on an existing [Catalogue](#).

Processes involved	Catalogue
Submitter role	Seller
Receiver role	Contracting Party
Normative schema	<a href="#">xsd/maindoc/UBL-CataloguePricingUpdate-2.1.xsd</a>
Runtime schema	<a href="#">xsdrt/maindoc/UBL-CataloguePricingUpdate-2.1.xsd</a>
RELAX NG schema	<a href="#">rnc/versions/UBL-CataloguePricingUpdate-2.1.rnc</a>
Document model (ODF)	<a href="#">mod/maindoc/UBL-CataloguePricingUpdate-2.1.ods</a>
Document model (Excel)	<a href="#">mod/maindoc/UBL-CataloguePricingUpdate-2.1.xls</a>
Summary report	<a href="#">mod/summary/reports/UBL-CataloguePricingUpdate-2.1.html</a>

### 3.1.10 Catalogue Request

Description: The document used to request a [Catalogue](#).

Processes involved	Catalogue
Submitter role	Contracting Party
Receiver role	Seller
Normative schema	<a href="#">xsd/maindoc/UBL-CatalogueRequest-2.1.xsd</a>
Runtime schema	<a href="#">xsdrt/maindoc/UBL-CatalogueRequest-2.1.xsd</a>
RELAX NG schema	<a href="#">rnc/versions/UBL-CatalogueRequest-2.1.rnc</a>
Document model (ODF)	<a href="#">mod/maindoc/UBL-CatalogueRequest-2.1.ods</a>
Document model (Excel)	<a href="#">mod/maindoc/UBL-CatalogueRequest-2.1.xls</a>
Summary report	<a href="#">mod/summary/reports/UBL-CatalogueRequest-2.1.html</a>

### 3.1.11 Certificate of Origin

Description: A document that describes the Certificate of Origin.

Processes involved	Certification of Origin of Goods
Submitter role	Exporter, Issuer
Receiver role	Issuer, Importer
Normative schema	<a href="#">xsd/maindoc/UBL-CertificateOfOrigin-2.1.xsd</a>
Runtime schema	<a href="#">xsdrt/maindoc/UBL-CertificateOfOrigin-2.1.xsd</a>
RELAX NG schema	<a href="#">rnc/versions/UBL-CertificateOfOrigin-2.1.rnc</a>
Document model (ODF)	<a href="#">mod/maindoc/UBL-CertificateOfOrigin-2.1.ods</a>
Document model (Excel)	<a href="#">mod/maindoc/UBL-CertificateOfOrigin-2.1.xls</a>

Summary report	<a href="mod/summary/reports/UBL-CertificateOfOrigin-2.1.html">mod/summary/reports/UBL-CertificateOfOrigin-2.1.html</a>
----------------	---

### 3.1.12 Contract Award Notice

Description: The document published by a Contracting Party to announce the awarding of a procurement project.

Processes involved	Tendering
Submitter role	Contracting Authority
Receiver role	Tenderer
Normative schema	<a href="xsd/maindoc/UBL-ContractAwardNotice-2.1.xsd">xsd/maindoc/UBL-ContractAwardNotice-2.1.xsd</a>
Runtime schema	<a href="xsdrt/maindoc/UBL-ContractAwardNotice-2.1.xsd">xsdrt/maindoc/UBL-ContractAwardNotice-2.1.xsd</a>
RELAX NG schema	<a href="rnc/versions/UBL-ContractAwardNotice-2.1.rnc">rnc/versions/UBL-ContractAwardNotice-2.1.rnc</a>
Document model (ODF)	<a href="mod/maindoc/UBL-ContractAwardNotice-2.1.ods">mod/maindoc/UBL-ContractAwardNotice-2.1.ods</a>
Document model (Excel)	<a href="mod/maindoc/UBL-ContractAwardNotice-2.1.xls">mod/maindoc/UBL-ContractAwardNotice-2.1.xls</a>
Summary report	<a href="mod/summary/reports/UBL-ContractAwardNotice-2.1.html">mod/summary/reports/UBL-ContractAwardNotice-2.1.html</a>

### 3.1.13 Contract Notice

Description: The document used for a Contracting Party to announce the project to buy goods, services or works.

Processes involved	Tendering
Submitter role	Contracting Authority
Receiver role	Tenderer
Normative schema	<a href="xsd/maindoc/UBL-ContractNotice-2.1.xsd">xsd/maindoc/UBL-ContractNotice-2.1.xsd</a>
Runtime schema	<a href="xsdrt/maindoc/UBL-ContractNotice-2.1.xsd">xsdrt/maindoc/UBL-ContractNotice-2.1.xsd</a>
RELAX NG schema	<a href="rnc/versions/UBL-ContractNotice-2.1.rnc">rnc/versions/UBL-ContractNotice-2.1.rnc</a>
Document model (ODF)	<a href="mod/maindoc/UBL-ContractNotice-2.1.ods">mod/maindoc/UBL-ContractNotice-2.1.ods</a>
Document model (Excel)	<a href="mod/maindoc/UBL-ContractNotice-2.1.xls">mod/maindoc/UBL-ContractNotice-2.1.xls</a>
Summary report	<a href="mod/summary/reports/UBL-ContractNotice-2.1.html">mod/summary/reports/UBL-ContractNotice-2.1.html</a>

### 3.1.14 Credit Note

Description: The document used to specify credits due to the Debtor from the Creditor.

Processes involved	Billing
Submitter role	Supplier Accounting Party
Receiver role	Customer Accounting Party
Normative schema	<a href="xsd/maindoc/UBL-CreditNote-2.1.xsd">xsd/maindoc/UBL-CreditNote-2.1.xsd</a>
Runtime schema	<a href="xsdrt/maindoc/UBL-CreditNote-2.1.xsd">xsdrt/maindoc/UBL-CreditNote-2.1.xsd</a>
RELAX NG schema	<a href="rnc/versions/UBL-CreditNote-2.1.rnc">rnc/versions/UBL-CreditNote-2.1.rnc</a>
Document model (ODF)	<a href="mod/maindoc/UBL-CreditNote-2.1.ods">mod/maindoc/UBL-CreditNote-2.1.ods</a>
Document model (Excel)	<a href="mod/maindoc/UBL-CreditNote-2.1.xls">mod/maindoc/UBL-CreditNote-2.1.xls</a>
Summary report	<a href="mod/summary/reports/UBL-CreditNote-2.1.html">mod/summary/reports/UBL-CreditNote-2.1.html</a>
UBL 2.0 example instance	<a href="xml/UBL-CreditNote-2.0-Example.xml">xml/UBL-CreditNote-2.0-Example.xml</a>

UBL 2.1 example instance	<a href="#">xml/UBL-CreditNote-2.1-Example.xml</a>
--------------------------	--

### 3.1.15 Debit Note

Description: The document used to specify debits made by the Debtor.

Processes involved	Billing
Submitter role	Customer Accounting Party
Receiver role	Supplier Accounting Party
Normative schema	<a href="#">xsd/maindoc/UBL-DebitNote-2.1.xsd</a>
Runtime schema	<a href="#">xsdrt/maindoc/UBL-DebitNote-2.1.xsd</a>
RELAX NG schema	<a href="#">rnc/versions/UBL-DebitNote-2.1.rnc</a>
Document model (ODF)	<a href="#">mod/maindoc/UBL-DebitNote-2.1.ods</a>
Document model (Excel)	<a href="#">mod/maindoc/UBL-DebitNote-2.1.xls</a>
Summary report	<a href="#">mod/summary/reports/UBL-DebitNote-2.1.html</a>
UBL 2.1 example instance	<a href="#">xml/UBL-DebitNote-2.1-Example.xml</a>

### 3.1.16 Despatch Advice

Description: The document used to describe the despatch or delivery of goods and services.

Processes involved	Fulfilment
Submitter role	Despatch
Receiver role	Delivery
Normative schema	<a href="#">xsd/maindoc/UBL-DespatchAdvice-2.1.xsd</a>
Runtime schema	<a href="#">xsdrt/maindoc/UBL-DespatchAdvice-2.1.xsd</a>
RELAX NG schema	<a href="#">rnc/versions/UBL-DespatchAdvice-2.1.rnc</a>
Document model (ODF)	<a href="#">mod/maindoc/UBL-DespatchAdvice-2.1.ods</a>
Document model (Excel)	<a href="#">mod/maindoc/UBL-DespatchAdvice-2.1.xls</a>
Summary report	<a href="#">mod/summary/reports/UBL-DespatchAdvice-2.1.html</a>
UBL 2.0 example instance	<a href="#">xml/UBL-DespatchAdvice-2.0-Example.xml</a>

### 3.1.17 Document Status

Description: A document used to provide information about document status.

Processes involved	Any collaboration
Submitter role	Party currently controlling Status of the collaboration
Receiver role	Party requesting Status on collaboration
Normative schema	<a href="#">xsd/maindoc/UBL-DocumentStatus-2.1.xsd</a>
Runtime schema	<a href="#">xsdrt/maindoc/UBL-DocumentStatus-2.1.xsd</a>
RELAX NG schema	<a href="#">rnc/versions/UBL-DocumentStatus-2.1.rnc</a>
Document model (ODF)	<a href="#">mod/maindoc/UBL-DocumentStatus-2.1.ods</a>
Document model (Excel)	<a href="#">mod/maindoc/UBL-DocumentStatus-2.1.xls</a>
Summary report	<a href="#">mod/summary/reports/UBL-DocumentStatus-2.1.html</a>

### 3.1.18 Document Status Request

Description: A document used to request the status of another document.

Processes involved	Any collaboration
Submitter role	Party requesting Status on collaboration
Receiver role	Party currently controlling Status of the collaboration
Normative schema	<a href="#">xsd/maindoc/UBL-DocumentStatusRequest-2.1.xsd</a>
Runtime schema	<a href="#">xsdrt/maindoc/UBL-DocumentStatusRequest-2.1.xsd</a>
RELAX NG schema	<a href="#">rnc/versions/UBL-DocumentStatusRequest-2.1.rnc</a>
Document model (ODF)	<a href="#">mod/maindoc/UBL-DocumentStatusRequest-2.1.ods</a>
Document model (Excel)	<a href="#">mod/maindoc/UBL-DocumentStatusRequest-2.1.xls</a>
Summary report	<a href="#">mod/summary/reports/UBL-DocumentStatusRequest-2.1.html</a>

### 3.1.19 Exception Criteria

Description: Used to specify basic information about the content of the message including version number, creation date and time.

Processes involved	Collaborative Planning, Forecasting and Replenishment
Submitter role	Buyer, Seller
Receiver role	Buyer, Seller
Normative schema	<a href="#">xsd/maindoc/UBL-ExceptionCriteria-2.1.xsd</a>
Runtime schema	<a href="#">xsdrt/maindoc/UBL-ExceptionCriteria-2.1.xsd</a>
RELAX NG schema	<a href="#">rnc/versions/UBL-ExceptionCriteria-2.1.rnc</a>
Document model (ODF)	<a href="#">mod/maindoc/UBL-ExceptionCriteria-2.1.ods</a>
Document model (Excel)	<a href="#">mod/maindoc/UBL-ExceptionCriteria-2.1.xls</a>
Summary report	<a href="#">mod/summary/reports/UBL-ExceptionCriteria-2.1.html</a>
UBL 2.1 example instance	<a href="#">xml/UBL-ExceptionCriteria-2.1-Example.xml</a>

### 3.1.20 Exception Notification

Description: The document used to notify an exception.

Processes involved	Collaborative Planning, Forecasting and Replenishment
Submitter role	Buyer, Seller
Receiver role	Buyer, Seller
Normative schema	<a href="#">xsd/maindoc/UBL-ExceptionNotification-2.1.xsd</a>
Runtime schema	<a href="#">xsdrt/maindoc/UBL-ExceptionNotification-2.1.xsd</a>
RELAX NG schema	<a href="#">rnc/versions/UBL-ExceptionNotification-2.1.rnc</a>
Document model (ODF)	<a href="#">mod/maindoc/UBL-ExceptionNotification-2.1.ods</a>
Document model (Excel)	<a href="#">mod/maindoc/UBL-ExceptionNotification-2.1.xls</a>
Summary report	<a href="#">mod/summary/reports/UBL-ExceptionNotification-2.1.html</a>
UBL 2.1 example instance	<a href="#">xml/UBL-ExceptionNotification-2.1-Example.xml</a>

### 3.1.21 Forecast

Description: The document used to specify a forecast.

Processes involved	Collaborative Planning, Forecasting and Replenishment
Submitter role	Buyer, Seller
Receiver role	Buyer, Seller
Normative schema	<a href="#">xsd/maindoc/UBL-Forecast-2.1.xsd</a>
Runtime schema	<a href="#">xsdrt/maindoc/UBL-Forecast-2.1.xsd</a>
RELAX NG schema	<a href="#">rnc/versions/UBL-Forecast-2.1.rnc</a>
Document model (ODF)	<a href="#">mod/maindoc/UBL-Forecast-2.1.ods</a>
Document model (Excel)	<a href="#">mod/maindoc/UBL-Forecast-2.1.xls</a>
Summary report	<a href="#">mod/summary/reports/UBL-Forecast-2.1.html</a>
UBL 2.1 example instance	<a href="#">xml/UBL-Forecast-2.1-Example.xml</a>

### 3.1.22 Forecast Revision

Description: The document used to revise a [Forecast](#).

Processes involved	Collaborative Planning, Forecasting and Replenishment
Submitter role	Buyer, Seller
Receiver role	Buyer, Seller
Normative schema	<a href="#">xsd/maindoc/UBL-ForecastRevision-2.1.xsd</a>
Runtime schema	<a href="#">xsdrt/maindoc/UBL-ForecastRevision-2.1.xsd</a>
RELAX NG schema	<a href="#">rnc/versions/UBL-ForecastRevision-2.1.rnc</a>
Document model (ODF)	<a href="#">mod/maindoc/UBL-ForecastRevision-2.1.ods</a>
Document model (Excel)	<a href="#">mod/maindoc/UBL-ForecastRevision-2.1.xls</a>
Summary report	<a href="#">mod/summary/reports/UBL-ForecastRevision-2.1.html</a>
UBL 2.1 example instance	<a href="#">xml/UBL-ForecastRevision-2.1-Example.xml</a>

### 3.1.23 Forwarding Instructions

Description: The document issued to a forwarder, giving instructions regarding the action to be taken for the forwarding of goods described therein. Forwarding Instructions is used by any party who gives instructions for the transportation services required for a consignment of goods to any party who is contracted to provide the transportation services. The parties who issue this document are commonly referred to as the shipper or consignor, while the parties who receive this document are forwarders, carriers, shipping agents, etc. Note that this document may also be issued by a forwarder or shipping agent in their capacity as a shipper. This document can be used to arrange for the transportation (1) of different types of goods or cargoes; (2) whether containerized or non-containerized; (3) through different modes of transport including multi-modal; and (4) from any origin to any destination.

Processes involved	Freight Management
Submitter role	Consignor (or Consignee), Freight Forwarder
Receiver role	Freight Forwarder, Carrier
Normative schema	<a href="#">xsd/maindoc/UBL-ForwardingInstructions-2.1.xsd</a>
Runtime schema	<a href="#">xsdrt/maindoc/UBL-ForwardingInstructions-2.1.xsd</a>
RELAX NG schema	<a href="#">rnc/versions/UBL-ForwardingInstructions-2.1.rnc</a>

Document model (ODF)	<a href="#">mod/maindoc/UBL-ForwardingInstructions-2.1.ods</a>
Document model (Excel)	<a href="#">mod/maindoc/UBL-ForwardingInstructions-2.1.xls</a>
Summary report	<a href="#">mod/summary/reports/UBL-ForwardingInstructions-2.1.html</a>
UBL 2.0 example instance	<a href="#">xml/UBL-ForwardingInstructions-2.0-Example-International.xml</a>

### 3.1.24 Freight Invoice

Description: A document stating the charges incurred for the logistics service.

Processes involved	Freight Billing
Submitter role	Freight Forwarder
Receiver role	Consignor or Consignee
Normative schema	<a href="#">xsd/maindoc/UBL-FreightInvoice-2.1.xsd</a>
Runtime schema	<a href="#">xsdrt/maindoc/UBL-FreightInvoice-2.1.xsd</a>
RELAX NG schema	<a href="#">rnc/versions/UBL-FreightInvoice-2.1.rnc</a>
Document model (ODF)	<a href="#">mod/maindoc/UBL-FreightInvoice-2.1.ods</a>
Document model (Excel)	<a href="#">mod/maindoc/UBL-FreightInvoice-2.1.xls</a>
Summary report	<a href="#">mod/summary/reports/UBL-FreightInvoice-2.1.html</a>
UBL 2.1 example instance	<a href="#">xml/UBL-FreightInvoice-2.1-Example.xml</a>

### 3.1.25 Goods Item Itinerary

Description: A document specifying the route and the time schedule for a transport of a Goods Item for all segments in a transport service.

Processes involved	Intermodal Freight Management
Submitter role	Transport Service Provider
Receiver role	Transport User
Normative schema	<a href="#">xsd/maindoc/UBL-GoodsItemItinerary-2.1.xsd</a>
Runtime schema	<a href="#">xsdrt/maindoc/UBL-GoodsItemItinerary-2.1.xsd</a>
RELAX NG schema	<a href="#">rnc/versions/UBL-GoodsItemItinerary-2.1.rnc</a>
Document model (ODF)	<a href="#">mod/maindoc/UBL-GoodsItemItinerary-2.1.ods</a>
Document model (Excel)	<a href="#">mod/maindoc/UBL-GoodsItemItinerary-2.1.xls</a>
Summary report	<a href="#">mod/summary/reports/UBL-GoodsItemItinerary-2.1.html</a>
UBL 2.1 example instance	<a href="#">xml/UBL-GoodsItemItinerary-2.1-Example.xml</a>

### 3.1.26 Guarantee Certificate

Description: A document to notify the deposit of a guarantee.

Processes involved	Tendering
Submitter role	Tenderer
Receiver role	Contracting Authority
Normative schema	<a href="#">xsd/maindoc/UBL-GuaranteeCertificate-2.1.xsd</a>
Runtime schema	<a href="#">xsdrt/maindoc/UBL-GuaranteeCertificate-2.1.xsd</a>
RELAX NG schema	<a href="#">rnc/versions/UBL-GuaranteeCertificate-2.1.rnc</a>



Document model (ODF)	<a href="#">mod/maindoc/UBL-GuaranteeCertificate-2.1.ods</a>
Document model (Excel)	<a href="#">mod/maindoc/UBL-GuaranteeCertificate-2.1.xls</a>
Summary report	<a href="#">mod/summary/reports/UBL-GuaranteeCertificate-2.1.html</a>

### 3.1.27 Instruction for Returns

Description: This document is used to initiate a return of goods. The producer is requesting products which are badly sold either for use in other places or just to free the area from it.

Processes involved	Cyclic Replenishment Program
Submitter role	Seller
Receiver role	Buyer
Normative schema	<a href="#">xsd/maindoc/UBL-InstructionForReturns-2.1.xsd</a>
Runtime schema	<a href="#">xsdrt/maindoc/UBL-InstructionForReturns-2.1.xsd</a>
RELAX NG schema	<a href="#">rnc/versions/UBL-InstructionForReturns-2.1.rnc</a>
Document model (ODF)	<a href="#">mod/maindoc/UBL-InstructionForReturns-2.1.ods</a>
Document model (Excel)	<a href="#">mod/maindoc/UBL-InstructionForReturns-2.1.xls</a>
Summary report	<a href="#">mod/summary/reports/UBL-InstructionForReturns-2.1.html</a>
UBL 2.1 example instance	<a href="#">xml/UBL-InstructionForReturns-2.1-Example.xml</a>

### 3.1.28 Inventory Report

Description: Report about the quantities of each item which are or will be on stock.

Processes involved	Cyclic Replenishment Program
Submitter role	Buyer
Receiver role	Seller
Normative schema	<a href="#">xsd/maindoc/UBL-InventoryReport-2.1.xsd</a>
Runtime schema	<a href="#">xsdrt/maindoc/UBL-InventoryReport-2.1.xsd</a>
RELAX NG schema	<a href="#">rnc/versions/UBL-InventoryReport-2.1.rnc</a>
Document model (ODF)	<a href="#">mod/maindoc/UBL-InventoryReport-2.1.ods</a>
Document model (Excel)	<a href="#">mod/maindoc/UBL-InventoryReport-2.1.xls</a>
Summary report	<a href="#">mod/summary/reports/UBL-InventoryReport-2.1.html</a>
UBL 2.1 example instance	<a href="#">xml/UBL-InventoryReport-2.1-Example.xml</a>

### 3.1.29 Invoice

Description: The document used to request payment.

Processes involved	Billing
Submitter role	Supplier Accounting Party
Receiver role	Customer Accounting Party
Normative schema	<a href="#">xsd/maindoc/UBL-Invoice-2.1.xsd</a>
Runtime schema	<a href="#">xsdrt/maindoc/UBL-Invoice-2.1.xsd</a>
RELAX NG schema	<a href="#">rnc/versions/UBL-Invoice-2.1.rnc</a>
Document model (ODF)	<a href="#">mod/maindoc/UBL-Invoice-2.1.ods</a>

Document model (Excel)	<a href="#">mod/maindoc/UBL-Invoice-2.1.xls</a>
Summary report	<a href="#">mod/summary/reports/UBL-Invoice-2.1.html</a>
UBL 2.0 example instance	<a href="#">xml/UBL-Invoice-2.0-Example.xml</a>
UBL 2.1 example instance	<a href="#">xml/UBL-Invoice-2.1-Example.xml</a>

### 3.1.30 Item Information Request

Description: The document used to request product activity, forecast, or performance data.

Processes involved	Collaborative Planning, Forecasting and Replenishment
Submitter role	Buyer, Seller
Receiver role	Buyer, Seller
Normative schema	<a href="#">xsd/maindoc/UBL-ItemInformationRequest-2.1.xsd</a>
Runtime schema	<a href="#">xsdrt/maindoc/UBL-ItemInformationRequest-2.1.xsd</a>
RELAX NG schema	<a href="#">rnc/versions/UBL-ItemInformationRequest-2.1.rnc</a>
Document model (ODF)	<a href="#">mod/maindoc/UBL-ItemInformationRequest-2.1.ods</a>
Document model (Excel)	<a href="#">mod/maindoc/UBL-ItemInformationRequest-2.1.xls</a>
Summary report	<a href="#">mod/summary/reports/UBL-ItemInformationRequest-2.1.html</a>

### 3.1.31 Order

Description: The document used to order goods and services.

Processes involved	Ordering
Submitter role	Buyer
Receiver role	Seller
Normative schema	<a href="#">xsd/maindoc/UBL-Order-2.1.xsd</a>
Runtime schema	<a href="#">xsdrt/maindoc/UBL-Order-2.1.xsd</a>
RELAX NG schema	<a href="#">rnc/versions/UBL-Order-2.1.rnc</a>
Document model (ODF)	<a href="#">mod/maindoc/UBL-Order-2.1.ods</a>
Document model (Excel)	<a href="#">mod/maindoc/UBL-Order-2.1.xls</a>
Summary report	<a href="#">mod/summary/reports/UBL-Order-2.1.html</a>
UBL 2.0 example instance	<a href="#">xml/UBL-Order-2.0-Example.xml</a>
UBL 2.1 example instance	<a href="#">xml/UBL-Order-2.1-Example.xml</a>

### 3.1.32 Order Cancellation

Description: The document used to cancel an entire [Order](#).

Processes involved	Ordering, Fulfilment
Submitter role	Buyer
Receiver role	Seller
Normative schema	<a href="#">xsd/maindoc/UBL-OrderCancellation-2.1.xsd</a>
Runtime schema	<a href="#">xsdrt/maindoc/UBL-OrderCancellation-2.1.xsd</a>
RELAX NG schema	<a href="#">rnc/versions/UBL-OrderCancellation-2.1.rnc</a>
Document model (ODF)	<a href="#">mod/maindoc/UBL-OrderCancellation-2.1.ods</a>

Document model (Excel)	<a href="#">mod/maindoc/UBL-OrderCancellation-2.1.xls</a>
Summary report	<a href="#">mod/summary/reports/UBL-OrderCancellation-2.1.html</a>
UBL 2.1 example instance	<a href="#">xml/UBL-OrderCancellation-2.1-Example.xml</a>

### 3.1.33 Order Change

Description: The document used to specify changes to an existing [Order](#).

Processes involved	Ordering, Fulfilment
Submitter role	Buyer
Receiver role	Seller
Normative schema	<a href="#">xsd/maindoc/UBL-OrderChange-2.1.xsd</a>
Runtime schema	<a href="#">xsdrt/maindoc/UBL-OrderChange-2.1.xsd</a>
RELAX NG schema	<a href="#">rnc/versions/UBL-OrderChange-2.1.rnc</a>
Document model (ODF)	<a href="#">mod/maindoc/UBL-OrderChange-2.1.ods</a>
Document model (Excel)	<a href="#">mod/maindoc/UBL-OrderChange-2.1.xls</a>
Summary report	<a href="#">mod/summary/reports/UBL-OrderChange-2.1.html</a>
UBL 2.1 example instance	<a href="#">xml/UBL-OrderChange-2.1-Example.xml</a>

### 3.1.34 Order Response

Description: The document used to indicate detailed acceptance or rejection of an [Order](#) or to make a counter-offer.

Processes involved	Ordering
Submitter role	Seller
Receiver role	Buyer
Normative schema	<a href="#">xsd/maindoc/UBL-OrderResponse-2.1.xsd</a>
Runtime schema	<a href="#">xsdrt/maindoc/UBL-OrderResponse-2.1.xsd</a>
RELAX NG schema	<a href="#">rnc/versions/UBL-OrderResponse-2.1.rnc</a>
Document model (ODF)	<a href="#">mod/maindoc/UBL-OrderResponse-2.1.ods</a>
Document model (Excel)	<a href="#">mod/maindoc/UBL-OrderResponse-2.1.xls</a>
Summary report	<a href="#">mod/summary/reports/UBL-OrderResponse-2.1.html</a>
UBL 2.1 example instance	<a href="#">xml/UBL-OrderResponse-2.1-Example.xml</a>

### 3.1.35 Order Response Simple

Description: The document used to indicate simple acceptance or rejection of an entire [Order](#).

Processes involved	Ordering
Submitter role	Seller
Receiver role	Buyer
Normative schema	<a href="#">xsd/maindoc/UBL-OrderResponseSimple-2.1.xsd</a>
Runtime schema	<a href="#">xsdrt/maindoc/UBL-OrderResponseSimple-2.1.xsd</a>
RELAX NG schema	<a href="#">rnc/versions/UBL-OrderResponseSimple-2.1.rnc</a>
Document model (ODF)	<a href="#">mod/maindoc/UBL-OrderResponseSimple-2.1.ods</a>

Document model (Excel)	<a href="#">mod/maindoc/UBL-OrderResponseSimple-2.1.xls</a>
Summary report	<a href="#">mod/summary/reports/UBL-OrderResponseSimple-2.1.html</a>
UBL 2.0 example instance	<a href="#">xml/UBL-OrderResponseSimple-2.0-Example.xml</a>
UBL 2.1 example instance	<a href="#">xml/UBL-OrderResponseSimple-2.1-Example.xml</a>

### 3.1.36 Packing List

Description: A document stating the detail of how goods are packed.

Processes involved	Freight Management
Submitter role	Consignor
Receiver role	Freight Forwarder
Normative schema	<a href="#">xsd/maindoc/UBL-PackingList-2.1.xsd</a>
Runtime schema	<a href="#">xsdrt/maindoc/UBL-PackingList-2.1.xsd</a>
RELAX NG schema	<a href="#">rnc/versions/UBL-PackingList-2.1.rnc</a>
Document model (ODF)	<a href="#">mod/maindoc/UBL-PackingList-2.1.ods</a>
Document model (Excel)	<a href="#">mod/maindoc/UBL-PackingList-2.1.xls</a>
Summary report	<a href="#">mod/summary/reports/UBL-PackingList-2.1.html</a>

### 3.1.37 Performance History

Description: Performance History represents a collection of values gathered for key performance metrics in the trading partner relationship.

Processes involved	Cyclic Replenishment Program
Submitter role	Buyer, Seller
Receiver role	Buyer, Seller
Normative schema	<a href="#">xsd/maindoc/UBL-PerformanceHistory-2.1.xsd</a>
Runtime schema	<a href="#">xsdrt/maindoc/UBL-PerformanceHistory-2.1.xsd</a>
RELAX NG schema	<a href="#">rnc/versions/UBL-PerformanceHistory-2.1.rnc</a>
Document model (ODF)	<a href="#">mod/maindoc/UBL-PerformanceHistory-2.1.ods</a>
Document model (Excel)	<a href="#">mod/maindoc/UBL-PerformanceHistory-2.1.xls</a>
Summary report	<a href="#">mod/summary/reports/UBL-PerformanceHistory-2.1.html</a>
UBL 2.1 example instance	<a href="#">xml/UBL-PerformanceHistory-2.1-Example.xml</a>

### 3.1.38 Prior Information Notice

Description: The document used for a Contracting Party to declare the intention to buy goods, services or works during an specified period.

Processes involved	Tendering
Submitter role	Contracting Authority
Receiver role	Tenderer
Normative schema	<a href="#">xsd/maindoc/UBL-PriorInformationNotice-2.1.xsd</a>
Runtime schema	<a href="#">xsdrt/maindoc/UBL-PriorInformationNotice-2.1.xsd</a>
RELAX NG schema	<a href="#">rnc/versions/UBL-PriorInformationNotice-2.1.rnc</a>

Document model (ODF)	<a href="#">mod/maindoc/UBL-PriorInformationNotice-2.1.ods</a>
Document model (Excel)	<a href="#">mod/maindoc/UBL-PriorInformationNotice-2.1.xls</a>
Summary report	<a href="#">mod/summary/reports/UBL-PriorInformationNotice-2.1.html</a>

### 3.1.39 Product Activity

Represents the movement of a product through a location in terms of the base unit of measure for the item.

Processes involved	CPFR, VMI
Submitter role	Buyer
Receiver role	Seller
Normative schema	<a href="#">xsd/maindoc/UBL-ProductActivity-2.1.xsd</a>
Runtime schema	<a href="#">xsdrt/maindoc/UBL-ProductActivity-2.1.xsd</a>
RELAX NG schema	<a href="#">rnc/versions/UBL-ProductActivity-2.1.rnc</a>
Document model (ODF)	<a href="#">mod/maindoc/UBL-ProductActivity-2.1.ods</a>
Document model (Excel)	<a href="#">mod/maindoc/UBL-ProductActivity-2.1.xls</a>
Summary report	<a href="#">mod/summary/reports/UBL-ProductActivity-2.1.html</a>
UBL 2.1 example instance 1	<a href="#">xml/UBL-ProductActivity-2.1-Example-1.xml</a>
UBL 2.1 example instance 2	<a href="#">xml/UBL-ProductActivity-2.1-Example-2.xml</a>
UBL 2.1 example instance 3	<a href="#">xml/UBL-ProductActivity-2.1-Example-3.xml</a>

### 3.1.40 Quotation

Description: The document used to quote for the provision of goods and services.

Processes involved	Quotation
Submitter role	Seller
Receiver role	Originator
Normative schema	<a href="#">xsd/maindoc/UBL-Quotation-2.1.xsd</a>
Runtime schema	<a href="#">xsdrt/maindoc/UBL-Quotation-2.1.xsd</a>
RELAX NG schema	<a href="#">rnc/versions/UBL-Quotation-2.1.rnc</a>
Document model (ODF)	<a href="#">mod/maindoc/UBL-Quotation-2.1.ods</a>
Document model (Excel)	<a href="#">mod/maindoc/UBL-Quotation-2.1.xls</a>
Summary report	<a href="#">mod/summary/reports/UBL-Quotation-2.1.html</a>
UBL 2.0 example instance	<a href="#">xml/UBL-Quotation-2.0-Example.xml</a>
UBL 2.1 example instance	<a href="#">xml/UBL-Quotation-2.1-Example.xml</a>

### 3.1.41 Receipt Advice

Description: The document used to describe the receipt of goods and services.

Processes involved	Fulfilment
Submitter role	Delivery
Receiver role	Despatch
Normative schema	<a href="#">xsd/maindoc/UBL-ReceiptAdvice-2.1.xsd</a>

Runtime schema	<a href="#">xsdrt/maindoc/UBL-ReceiptAdvice-2.1.xsd</a>
RELAX NG schema	<a href="#">rnc/versions/UBL-ReceiptAdvice-2.1.rnc</a>
Document model (ODF)	<a href="#">mod/maindoc/UBL-ReceiptAdvice-2.1.ods</a>
Document model (Excel)	<a href="#">mod/maindoc/UBL-ReceiptAdvice-2.1.xls</a>
Summary report	<a href="#">mod/summary/reports/UBL-ReceiptAdvice-2.1.html</a>
UBL 2.0 example instance	<a href="#">xml/UBL-ReceiptAdvice-2.0-Example.xml</a>

### 3.1.42 Reminder

Description: The document used to remind the customer of payments overdue.

Processes involved	Billing
Submitter role	Supplier Accounting Party and/or Payee
Receiver role	Customer Accounting Party and/or Payee
Normative schema	<a href="#">xsd/maindoc/UBL-Reminder-2.1.xsd</a>
Runtime schema	<a href="#">xsdrt/maindoc/UBL-Reminder-2.1.xsd</a>
RELAX NG schema	<a href="#">rnc/versions/UBL-Reminder-2.1.rnc</a>
Document model (ODF)	<a href="#">mod/maindoc/UBL-Reminder-2.1.ods</a>
Document model (Excel)	<a href="#">mod/maindoc/UBL-Reminder-2.1.xls</a>
Summary report	<a href="#">mod/summary/reports/UBL-Reminder-2.1.html</a>
UBL 2.1 example instance	<a href="#">xml/UBL-Reminder-2.1-Example.xml</a>

### 3.1.43 Remittance Advice

Description: The document used to specify details of an actual payment.

Processes involved	Payment
Submitter role	Supplier Accounting Party and/or Payee
Receiver role	Customer Accounting Party and/or Payee
Normative schema	<a href="#">xsd/maindoc/UBL-RemittanceAdvice-2.1.xsd</a>
Runtime schema	<a href="#">xsdrt/maindoc/UBL-RemittanceAdvice-2.1.xsd</a>
RELAX NG schema	<a href="#">rnc/versions/UBL-RemittanceAdvice-2.1.rnc</a>
Document model (ODF)	<a href="#">mod/maindoc/UBL-RemittanceAdvice-2.1.ods</a>
Document model (Excel)	<a href="#">mod/maindoc/UBL-RemittanceAdvice-2.1.xls</a>
Summary report	<a href="#">mod/summary/reports/UBL-RemittanceAdvice-2.1.html</a>
UBL 2.0 example instance	<a href="#">xml/UBL-RemittanceAdvice-2.0-Example.xml</a>

### 3.1.44 Request for Quotation

Description: The document used to request a [Quotation](#) for goods and services from a Seller.

Processes involved	Quotation
Submitter role	Originator
Receiver role	Seller
Normative schema	<a href="#">xsd/maindoc/UBL-RequestForQuotation-2.1.xsd</a>
Runtime schema	<a href="#">xsdrt/maindoc/UBL-RequestForQuotation-2.1.xsd</a>

RELAX NG schema	<a href="#">rnc/versions/UBL-RequestForQuotation-2.1.rnc</a>
Document model (ODF)	<a href="#">mod/maindoc/UBL-RequestForQuotation-2.1.ods</a>
Document model (Excel)	<a href="#">mod/maindoc/UBL-RequestForQuotation-2.1.xls</a>
Summary report	<a href="#">mod/summary/reports/UBL-RequestForQuotation-2.1.html</a>
UBL 2.0 example instance	<a href="#">xml/UBL-RequestForQuotation-2.0-Example.xml</a>
UBL 2.1 example instance	<a href="#">xml/UBL-RequestForQuotation-2.1-Example.xml</a>

### 3.1.45 Retail Event

Description: The document used to specify basic information about a retail event, including version number, creation date, and time.

Processes involved	Cyclic Replenishment Program
Submitter role	Buyer, Seller
Receiver role	Buyer, Seller
Normative schema	<a href="#">xsd/maindoc/UBL-RetailEvent-2.1.xsd</a>
Runtime schema	<a href="#">xsdrt/maindoc/UBL-RetailEvent-2.1.xsd</a>
RELAX NG schema	<a href="#">rnc/versions/UBL-RetailEvent-2.1.rnc</a>
Document model (ODF)	<a href="#">mod/maindoc/UBL-RetailEvent-2.1.ods</a>
Document model (Excel)	<a href="#">mod/maindoc/UBL-RetailEvent-2.1.xls</a>
Summary report	<a href="#">mod/summary/reports/UBL-RetailEvent-2.1.html</a>
UBL 2.1 example instance	<a href="#">xml/UBL-RetailEvent-2.1-Example.xml</a>

### 3.1.46 Self Billed Credit Note

Description: The Credit Note created by the Debtor in a Self Billing arrangement with a Creditor; Self Billed Credit Note replaces [Debit Note](#) in such arrangements.

Processes involved	Billing
Submitter role	Customer Accounting Party
Receiver role	Supplier Accounting Party
Normative schema	<a href="#">xsd/maindoc/UBL-SelfBilledCreditNote-2.1.xsd</a>
Runtime schema	<a href="#">xsdrt/maindoc/UBL-SelfBilledCreditNote-2.1.xsd</a>
RELAX NG schema	<a href="#">rnc/versions/UBL-SelfBilledCreditNote-2.1.rnc</a>
Document model (ODF)	<a href="#">mod/maindoc/UBL-SelfBilledCreditNote-2.1.ods</a>
Document model (Excel)	<a href="#">mod/maindoc/UBL-SelfBilledCreditNote-2.1.xls</a>
Summary report	<a href="#">mod/summary/reports/UBL-SelfBilledCreditNote-2.1.html</a>
UBL 2.1 example instance	<a href="#">xml/UBL-SelfBilledCreditNote-2.1-Example.xml</a>

### 3.1.47 Self Billed Invoice

Description: The Invoice document created by the Customer (rather than the Supplier) in a Self Billing relationship.

Processes involved	Billing
Submitter role	Customer Accounting Party

Receiver role	Supplier Accounting Party
Normative schema	<a href="#">xsd/maindoc/UBL-SelfBilledInvoice-2.1.xsd</a>
Runtime schema	<a href="#">xsdrt/maindoc/UBL-SelfBilledInvoice-2.1.xsd</a>
RELAX NG schema	<a href="#">rnc/versions/UBL-SelfBilledInvoice-2.1.rnc</a>
Document model (ODF)	<a href="#">mod/maindoc/UBL-SelfBilledInvoice-2.1.ods</a>
Document model (Excel)	<a href="#">mod/maindoc/UBL-SelfBilledInvoice-2.1.xls</a>
Summary report	<a href="#">mod/summary/reports/UBL-SelfBilledInvoice-2.1.html</a>

### 3.1.48 Statement

Description: The document used to specify the status of Orders, Billing, and Payment. This document is a Statement of Account and not intended as a summary Invoice.

Processes involved	Billing
Submitter role	Supplier Accounting Party
Receiver role	Customer Accounting Party
Normative schema	<a href="#">xsd/maindoc/UBL-Statement-2.1.xsd</a>
Runtime schema	<a href="#">xsdrt/maindoc/UBL-Statement-2.1.xsd</a>
RELAX NG schema	<a href="#">rnc/versions/UBL-Statement-2.1.rnc</a>
Document model (ODF)	<a href="#">mod/maindoc/UBL-Statement-2.1.ods</a>
Document model (Excel)	<a href="#">mod/maindoc/UBL-Statement-2.1.xls</a>
Summary report	<a href="#">mod/summary/reports/UBL-Statement-2.1.html</a>
UBL 2.0 example instance	<a href="#">xml/UBL-Statement-2.0-Example.xml</a>

### 3.1.49 Stock Availability Report

Description: Report about the quantities of each item which are or will be on stock.

Processes involved	Cyclic Replenishment Program
Submitter role	Seller (Producer)
Receiver role	Buyer (Retailer)
Normative schema	<a href="#">xsd/maindoc/UBL-StockAvailabilityReport-2.1.xsd</a>
Runtime schema	<a href="#">xsdrt/maindoc/UBL-StockAvailabilityReport-2.1.xsd</a>
RELAX NG schema	<a href="#">rnc/versions/UBL-StockAvailabilityReport-2.1.rnc</a>
Document model (ODF)	<a href="#">mod/maindoc/UBL-StockAvailabilityReport-2.1.ods</a>
Document model (Excel)	<a href="#">mod/maindoc/UBL-StockAvailabilityReport-2.1.xls</a>
Summary report	<a href="#">mod/summary/reports/UBL-StockAvailabilityReport-2.1.html</a>
UBL 2.1 example instance	<a href="#">xml/UBL-StockAvailabilityReport-2.1-Example.xml</a>

### 3.1.50 Tender

Description: A message which a tenderer offers a tender to the tendering organization for bid.

Processes involved	Tendering
Submitter role	Tenderer
Receiver role	Contracting Authority



Normative schema	<a href="#">xsd/maindoc/UBL-Tender-2.1.xsd</a>
Runtime schema	<a href="#">xsdrt/maindoc/UBL-Tender-2.1.xsd</a>
RELAX NG schema	<a href="#">rnc/versions/UBL-Tender-2.1.rnc</a>
Document model (ODF)	<a href="#">mod/maindoc/UBL-Tender-2.1.ods</a>
Document model (Excel)	<a href="#">mod/maindoc/UBL-Tender-2.1.xls</a>
Summary report	<a href="#">mod/summary/reports/UBL-Tender-2.1.html</a>

### 3.1.51 Tenderer Qualification

Description: A document used for the Tenderer to declare things about his own condition.

Processes involved	Tendering
Submitter role	Tenderer
Receiver role	Contracting Authority
Normative schema	<a href="#">xsd/maindoc/UBL-TendererQualification-2.1.xsd</a>
Runtime schema	<a href="#">xsdrt/maindoc/UBL-TendererQualification-2.1.xsd</a>
RELAX NG schema	<a href="#">rnc/versions/UBL-TendererQualification-2.1.rnc</a>
Document model (ODF)	<a href="#">mod/maindoc/UBL-TendererQualification-2.1.ods</a>
Document model (Excel)	<a href="#">mod/maindoc/UBL-TendererQualification-2.1.xls</a>
Summary report	<a href="#">mod/summary/reports/UBL-TendererQualification-2.1.html</a>

### 3.1.52 Tenderer Qualification Response

Description: A message which the procurement organization sends to an economic operator in order to notify its admission or exclusion to/from the tendering process.

Processes involved	Tendering
Submitter role	Contracting Authority
Receiver role	Tenderer
Normative schema	<a href="#">xsd/maindoc/UBL-TendererQualificationResponse-2.1.xsd</a>
Runtime schema	<a href="#">xsdrt/maindoc/UBL-TendererQualificationResponse-2.1.xsd</a>
RELAX NG schema	<a href="#">rnc/versions/UBL-TendererQualificationResponse-2.1.rnc</a>
Document model (ODF)	<a href="#">mod/maindoc/UBL-TendererQualificationResponse-2.1.ods</a>
Document model (Excel)	<a href="#">mod/maindoc/UBL-TendererQualificationResponse-2.1.xls</a>
Summary report	<a href="#">mod/summary/reports/UBL-TendererQualificationResponse-2.1.html</a>

### 3.1.53 Tender Receipt

Description: A message sent by the Contracting Party to an Economic Operator in order to notify the reception of the tendering offer.

Processes involved	Tendering
Submitter role	Contracting Authority
Receiver role	Tenderer
Normative schema	<a href="#">xsd/maindoc/UBL-TenderReceipt-2.1.xsd</a>
Runtime schema	<a href="#">xsdrt/maindoc/UBL-TenderReceipt-2.1.xsd</a>

RELAX NG schema	<a href="#">rnc/versions/UBL-TenderReceipt-2.1.rnc</a>
Document model (ODF)	<a href="#">mod/maindoc/UBL-TenderReceipt-2.1.ods</a>
Document model (Excel)	<a href="#">mod/maindoc/UBL-TenderReceipt-2.1.xls</a>
Summary report	<a href="#">mod/summary/reports/UBL-TenderReceipt-2.1.html</a>

### 3.1.54 Trade Item Location Profile

Description: This document is used to send trade item attributes which are focused on replenishment policies.

Processes involved	Collaborative Planning, Forecasting and Replenishment
Submitter role	Buyer, Seller
Receiver role	Buyer, Seller
Normative schema	<a href="#">xsd/maindoc/UBL-TradeItemLocationProfile-2.1.xsd</a>
Runtime schema	<a href="#">xsdrt/maindoc/UBL-TradeItemLocationProfile-2.1.xsd</a>
RELAX NG schema	<a href="#">rnc/versions/UBL-TradeItemLocationProfile-2.1.rnc</a>
Document model (ODF)	<a href="#">mod/maindoc/UBL-TradeItemLocationProfile-2.1.ods</a>
Document model (Excel)	<a href="#">mod/maindoc/UBL-TradeItemLocationProfile-2.1.xls</a>
Summary report	<a href="#">mod/summary/reports/UBL-TradeItemLocationProfile-2.1.html</a>
UBL 2.1 example instance	<a href="#">xml/UBL-TradeItemLocationProfile-2.1-Example.xml</a>

### 3.1.55 Transport Execution Plan

Description: A document which is used in the negotiation of a transport service between a transport user and a transport service provider.

Processes involved	Intermodal Freight Management
Submitter role	Transport User, Transport Service Provider
Receiver role	Transport Service Provider, Transport User
Normative schema	<a href="#">xsd/maindoc/UBL-TransportExecutionPlan-2.1.xsd</a>
Runtime schema	<a href="#">xsdrt/maindoc/UBL-TransportExecutionPlan-2.1.xsd</a>
RELAX NG schema	<a href="#">rnc/versions/UBL-TransportExecutionPlan-2.1.rnc</a>
Document model (ODF)	<a href="#">mod/maindoc/UBL-TransportExecutionPlan-2.1.ods</a>
Document model (Excel)	<a href="#">mod/maindoc/UBL-TransportExecutionPlan-2.1.xls</a>
Summary report	<a href="#">mod/summary/reports/UBL-TransportExecutionPlan-2.1.html</a>
UBL 2.1 example instance	<a href="#">xml/UBL-TransportExecutionPlan-2.1-Example.xml</a>

### 3.1.56 Transport Execution Status

Description: The Transport Execution Status is used to provide the transport user with timing and condition status information about the transport operation.

Processes involved	Intermodal Freight Management
Submitter role	Transport Service Provider
Receiver role	Transport User
Normative schema	<a href="#">xsd/maindoc/UBL-TransportExecutionStatus-2.1.xsd</a>

Runtime schema	<a href="#">xsdrt/maindoc/UBL-TransportExecutionStatus-2.1.xsd</a>
RELAX NG schema	<a href="#">rnc/versions/UBL-TransportExecutionStatus-2.1.rnc</a>
Document model (ODF)	<a href="#">mod/maindoc/UBL-TransportExecutionStatus-2.1.ods</a>
Document model (Excel)	<a href="#">mod/maindoc/UBL-TransportExecutionStatus-2.1.xls</a>
Summary report	<a href="#">mod/summary/reports/UBL-TransportExecutionStatus-2.1.html</a>
UBL 2.1 example instance	<a href="#">xml/UBL-TransportExecutionStatus-2.1-Example.xml</a>

### 3.1.57 Transport Progress Status

Description: A document being sent from Transportation Network Manager to Transport Service Provider giving a status on the transport means.

Processes involved	Intermodal Freight Management
Submitter role	Transportation Network Manager
Receiver role	Transport Service Provider
Normative schema	<a href="#">xsd/maindoc/UBL-TransportProgressStatus-2.1.xsd</a>
Runtime schema	<a href="#">xsdrt/maindoc/UBL-TransportProgressStatus-2.1.xsd</a>
RELAX NG schema	<a href="#">rnc/versions/UBL-TransportProgressStatus-2.1.rnc</a>
Document model (ODF)	<a href="#">mod/maindoc/UBL-TransportProgressStatus-2.1.ods</a>
Document model (Excel)	<a href="#">mod/maindoc/UBL-TransportProgressStatus-2.1.xls</a>
Summary report	<a href="#">mod/summary/reports/UBL-TransportProgressStatus-2.1.html</a>
UBL 2.1 example instance	<a href="#">xml/UBL-TransportProgressStatus-2.1-Example.xml</a>

### 3.1.58 Transport Service Description

Description: A document being sent from the Transport Service Provider to the Transport User in order to announce a transport service.

Processes involved	Intermodal Freight Management
Submitter role	Transport Service Provider
Receiver role	Transport User
Normative schema	<a href="#">xsd/maindoc/UBL-TransportServiceDescription-2.1.xsd</a>
Runtime schema	<a href="#">xsdrt/maindoc/UBL-TransportServiceDescription-2.1.xsd</a>
RELAX NG schema	<a href="#">rnc/versions/UBL-TransportServiceDescription-2.1.rnc</a>
Document model (ODF)	<a href="#">mod/maindoc/UBL-TransportServiceDescription-2.1.ods</a>
Document model (Excel)	<a href="#">mod/maindoc/UBL-TransportServiceDescription-2.1.xls</a>
Summary report	<a href="#">mod/summary/reports/UBL-TransportServiceDescription-2.1.html</a>
UBL 2.1 example instance	<a href="#">xml/UBL-TransportServiceDescription-2.1-Example.xml</a>

### 3.1.59 Transportation Status

Description: A message to report the transport status and/or change in the transport status (i.e. event) between agreed parties.

Processes involved	Freight Status Reporting
Submitter role	Freight Forwarder

Receiver role	Consignee, Consignor
Normative schema	<a href="#">xsd/maindoc/UBL-TransportationStatus-2.1.xsd</a>
Runtime schema	<a href="#">xsdrt/maindoc/UBL-TransportationStatus-2.1.xsd</a>
RELAX NG schema	<a href="#">rnc/versions/UBL-TransportationStatus-2.1.rnc</a>
Document model (ODF)	<a href="#">mod/maindoc/UBL-TransportationStatus-2.1.ods</a>
Document model (Excel)	<a href="#">mod/maindoc/UBL-TransportationStatus-2.1.xls</a>
Summary report	<a href="#">mod/summary/reports/UBL-TransportationStatus-2.1.html</a>
UBL 2.1 example instance	<a href="#">xml/UBL-TransportationStatus-2.1-Example.xml</a>

### 3.1.60 Unawarded Notification

Description: The document used to communicate the contract has been awarded to another tenderer.

Processes involved	Tendering
Submitter role	Contracting Authority
Receiver role	Tenderer
Normative schema	<a href="#">xsd/maindoc/UBL-UnawardedNotification-2.1.xsd</a>
Runtime schema	<a href="#">xsdrt/maindoc/UBL-UnawardedNotification-2.1.xsd</a>
RELAX NG schema	<a href="#">rnc/versions/UBL-UnawardedNotification-2.1.rnc</a>
Document model (ODF)	<a href="#">mod/maindoc/UBL-UnawardedNotification-2.1.ods</a>
Document model (Excel)	<a href="#">mod/maindoc/UBL-UnawardedNotification-2.1.xls</a>
Summary report	<a href="#">mod/summary/reports/UBL-UnawardedNotification-2.1.html</a>

### 3.1.61 Utility Statement

Description: The Utility Statement contains information on the consumption of services provided by utility suppliers to private and public customers. These utilities include electricity, gas, water and telephony services. The Utility Statement is therefore a supplement to an [Invoice](#) or [Credit Note](#).

Processes involved	Utility Billing
Submitter role	Supplier Accounting Party
Receiver role	Customer Accounting Party
Normative schema	<a href="#">xsd/maindoc/UBL-UtilityStatement-2.1.xsd</a>
Runtime schema	<a href="#">xsdrt/maindoc/UBL-UtilityStatement-2.1.xsd</a>
RELAX NG schema	<a href="#">rnc/versions/UBL-UtilityStatement-2.1.rnc</a>
Document model (ODF)	<a href="#">mod/maindoc/UBL-UtilityStatement-2.1.ods</a>
Document model (Excel)	<a href="#">mod/maindoc/UBL-UtilityStatement-2.1.xls</a>
Summary report	<a href="#">mod/summary/reports/UBL-UtilityStatement-2.1.html</a>

### 3.1.62 Waybill

Description: The Waybill is issued by the party who acts as an agent for the carrier or other agents, to the party who gives instructions for the transportation services (shipper, consignor, etc.) stating the details of the transportation, charges, and terms and conditions under which the transportation service is provided. The party issuing this document could be a party other than that providing the physical transportation. It corresponds to the information on the Forwarding Instructions. It is used for all modes of transport. It can serve as a contractual document between the parties for the transportation service. The

document made out by the carrier or on behalf of the carrier evidencing the contract for the transport of cargo.

Processes involved	Freight Management
Submitter role	Freight Forwarder, Carrier
Receiver role	Consignor (or Consignee), Freight Forwarder
Normative schema	<a href="#">xsd/maindoc/UBL-Waybill-2.1.xsd</a>
Runtime schema	<a href="#">xsdrt/maindoc/UBL-Waybill-2.1.xsd</a>
RELAX NG schema	<a href="#">rnc/versions/UBL-Waybill-2.1.rnc</a>
Document model (ODF)	<a href="#">mod/maindoc/UBL-Waybill-2.1.ods</a>
Document model (Excel)	<a href="#">mod/maindoc/UBL-Waybill-2.1.xls</a>
Summary report	<a href="#">mod/summary/reports/UBL-Waybill-2.1.html</a>
UBL 2.0 example instance	<a href="#">xml/UBL-Waybill-2.0-Example-International.xml</a>

## 3.2 UBL 2.1 Common Schemas

The `xsd/common` directory contains schemas referenced by the document schemas in `xsd/maindoc`. Elements defined in the common schemas constitute a library of reusable business data components from which the UBL document schemas are assembled.

The name of each schema file together with a brief description of its contents is given below.

### 3.2.1 Reusable BIE Schemas

#### CommonBasicComponents

[xsd/common/UBL-CommonBasicComponents-2.1.xsd](#)

The CommonBasicComponents schema defines the global Basic Business Information Entities (BBIEs) that are used throughout UBL, serving, in effect, as a “global BBIE type database” for constructing documents. BBIEs are the “leaf nodes” of UBL documents, corresponding to individual data fields in traditional printed business forms.

#### CommonAggregateComponents

[xsd/common/UBL-CommonAggregateComponents-2.1.xsd](#)

The CommonAggregateComponents schema defines the Aggregate Business Information Entities (ABIEs) that are used throughout UBL, serving, in effect, as an “ABIE type database” for constructing the main documents.

### 3.2.2 Reusable Data Type Schemas

#### CCTS\_CCT\_SchemaModule

[xsd/common/CCTS\\_CCT\\_SchemaModule-2.1.xsd](#)

This schema provides Core Component Types as defined by [CCTS]. These types are used to construct higher-level data types in a standardized and consistent manner. This schema is defined by UN/CEFACT and should not be modified. It is imported by the UBL Unqualified Data Type Schema, and its types are the basis upon which UBL’s unqualified data types are defined.

#### UnqualifiedDataTypes

[xsd/common/UBL-UnqualifiedDataTypes-2.1.xsd](#)